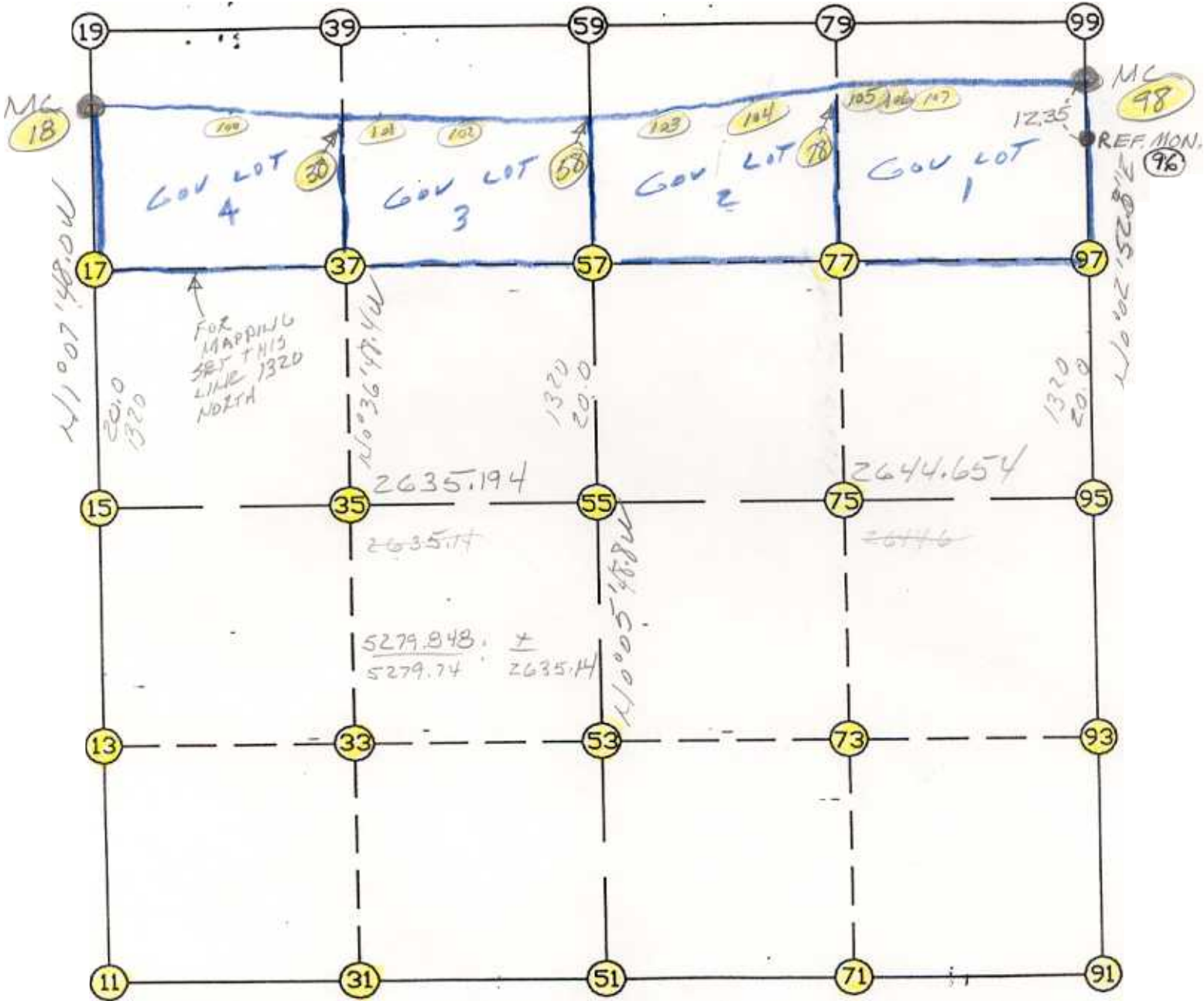


WRIGHT COUNTY SURVEYORS OFFICE

Public Works Building
Buffalo, Minn. 55313

SECTION 13 TOWNSHIP 121 RANGE 24



REMARKS

CENTER SECTION SET BASED ON COUNTY
RECORDS & SURVEY BY JOHN OLIVER - FOR
MORE DETAILS SEE JOB 93-53

THE INFORMATION SHOWN HEREON IS A COMPILATION OF WRIGHT COUNTY RECORDS AND IS INTENDED TO BE USED FOR COMPARISON PURPOSES ONLY. THE COUNTY IS NOT RESPONSIBLE FOR ANY INACCURACIES HEREIN CONTAINED.

===== COGO =====

Monday January 30, 1995

10:34 AM

Coordinate File Name: SEC-13.CRD Lowest pt #: 1 Highest pt #: 107

Job # : 95-08

Description: COUNTY COORDINATES SECTION 13 T121 R24

of chars. in point descr.: 10

FROM TYPE BEARING DISTANCE TO NORTHING EASTING

LIST POINTS

POINT	NORTHING	EASTING	ELEVATION	DESCR
11	210762.666672	556544.971211		
13	212081.678494	556545.584208		
15	213400.690315	556546.197204		
17	214720.433610	556520.165779		
18	215793.524882	556498.999470		
31	210799.343110	557864.749263		
33	212121.052151	557863.935817		
35	213442.761192	557863.122371		
37	214762.631896	557848.990443		
38	215859.355307	557837.247765		
51	210836.019547	559184.527314		
53	212160.425808	559182.287426		
55	213484.832069	559180.047539		
57	214804.830181	559177.815106		
58	215672.587647	559176.347521		
71	210888.693032	560502.709591		
73	212207.873504	560502.204944		
75	213527.053975	560501.700298		
77	214847.052799	560501.137009		
78	215677.249498	560500.782736		
91	210941.366517	561820.891869		
93	212255.321199	561822.122463		
95	213569.275881	561823.353057		
97	214889.275418	561824.458913		
98	216072.360002	561825.450065		
100	215959.107437	557255.272098		
101	215837.980119	557961.955274		
102	215847.710018	558130.588953		
103	215523.137585	560068.801644		
104	215571.745589	560273.391391		
105	215804.603096	560775.266462		
106	215915.409529	561104.780853		

START					11	210762.667	556544.971
11	INV N	0-01-35.9 E	2638.024		15	213400.690	556546.197
15	INV N	1-07-48.0 W	2393.300		18	215793.525	556498.999
18	INV N	87-00-12.1 E	5333.744		98	216072.360	561825.450
98	INV S	0-02-52.8 W	2503.085		95	213569.276	561823.353
95	INV S	0-03-13.2 W	2627.911		91	210941.367	561820.892
91	INV S	87-42-42.2 W	2638.469		51	210836.020	559184.527
51	INV S	88-24-29.4 W	2640.575		11	210762.667	556544.971
START					51	210836.020	559184.527
51	INV N	0-05-48.8 W	2648.816		55	213484.832	559180.048
55	INV N	0-05-48.8 W	1320.000		57	214804.830	559177.815
START					15	213400.690	556546.197
15	INV N	88-10-12.8 E	2635.194		55	213484.832	559180.048
55	INV N	88-10-12.8 E	2644.654		95	213569.276	561823.353

POINT-POINT ANGLES

ANGLE	51 -	11 -	15:	C.W.	271-37-06.5	C.C.W.	88-22-53.5	2638.024
ANGLE	11 -	15 -	18:	C.W.	178-50-36.2	C.C.W.	181-09-23.8	2393.300
ANGLE	15 -	18 -	98:	C.W.	268-08-00.0	C.C.W.	91-52-00.0	5333.744
ANGLE	18 -	98 -	95:	C.W.	273-02-40.7	C.C.W.	86-57-19.3	2503.085
ANGLE	98 -	95 -	91:	C.W.	180-00-20.4	C.C.W.	179-59-39.6	2627.911
ANGLE	95 -	91 -	51:	C.W.	267-39-29.0	C.C.W.	92-20-31.0	2638.469
ANGLE	91 -	51 -	11:	C.W.	180-41-47.2	C.C.W.	179-18-12.8	2640.575

Coordinates stored Monday January 30, 1995 10:40 AM

(