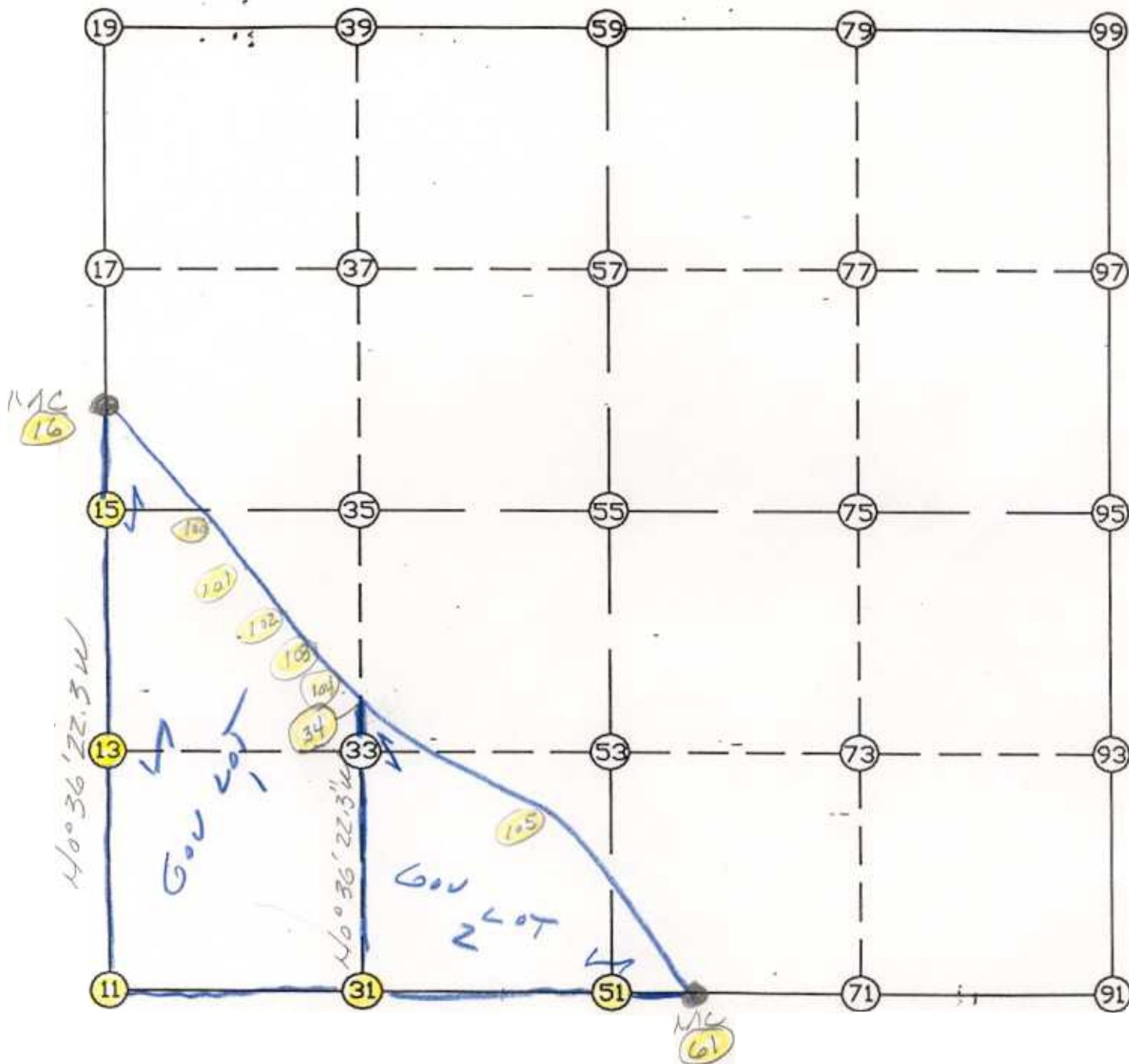


WRIGHT COUNTY SURVEYORS OFFICE

Public Works Building
Buffalo, Minn. 55313

SECTION 11 TOWNSHIP 121 RANGE 24



REMARKS

THE INFORMATION SHOWN HEREON IS A COMPILATION OF WRIGHT COUNTY RECORDS AND IS INTENDED TO BE USED FOR COMPARISON PURPOSES ONLY. THE COUNTY IS NOT RESPONSIBLE FOR ANY INACCURACIES HEREIN CONTAINED.

===== COGO =====

Monday January 30, 1995

9:36 AM

Coordinate File Name: SEC-11.CRD Lowest pt #: 1 Highest pt #: 105
Job # : 95-08
Description: COUNTY COORDINATES SECTION 11 T121 R24
of chars. in point descr.: 10

FROM TYPE BEARING DISTANCE TO NORTHING EASTING

LIST POINTS

POINT	NORTHING	EASTING	ELEVATION	DESCR
11	215968.034380	551340.724320		
13	217282.193704	551326.820082		
15	218596.353027	551312.915845		
16	218840.578930	551310.291722		
31	215964.052743	552645.598788		
34	217147.537882	552633.076943		
51	215960.071105	553950.473257		
61	215959.517286	554131.972412		
100	218573.712621	551504.762858		
101	218314.700677	551648.767006		
102	217966.080611	551834.890332		
103	217668.984893	552043.613502		
104	217439.085326	552282.349825		
105	216728.496454	553137.177375		

START

11	INV N	0-36-22.3 W	2628.466	15	218596.353	551312.916
15	INV N	0-36-56.2 W	244.240	16	218840.579	551310.292
16	INV S	44-24-12.3 E	4032.666	61	215959.517	554131.972
61	INV N	89-49-30.6 W	181.500	51	215960.071	553950.473
51	INV N	89-49-30.6 W	2609.761	11	215968.034	551340.724

POINT-POINT ANGLES

ANGLE	51 - 11 -	15:	C.W.	269-13-08.3	C.C.W.	90-46-51.7	2628.466
ANGLE	11 - 15 -	16:	C.W.	179-59-26.1	C.C.W.	180-00-33.9	244.240
ANGLE	15 - 16 -	61:	C.W.	316-12-43.9	C.C.W.	43-47-16.1	4032.666
ANGLE	16 - 61 -	51:	C.W.	314-34-41.7	C.C.W.	45-25-18.3	181.500
ANGLE	61 - 51 -	11:	C.W.	180-00-00.0	C.C.W.	180-00-00.0	2609.761

Coordinates stored

Monday January 30, 1995

9:37 AM