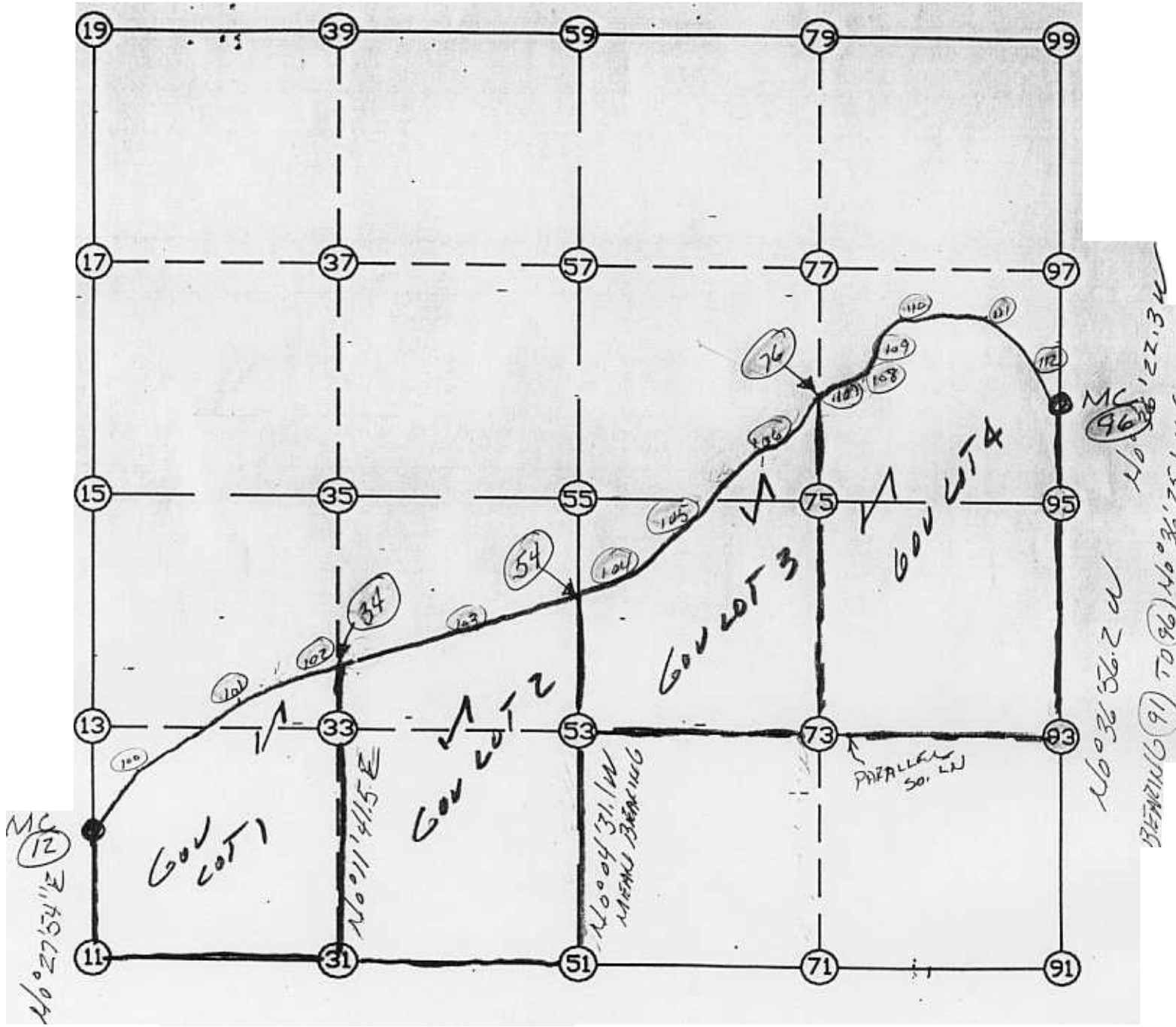


WRIGHT COUNTY SURVEYORS OFFICE

Public Works Building
Buffalo, Minn. 55313

SECTION 10 TOWNSHIP 121 RANGE 24



REMARKS

THE INFORMATION SHOWN HEREON IS A COMPILATION OF WRIGHT COUNTY RECORDS AND IS INTENDED TO BE USED FOR COMPARISON PURPOSES ONLY. THE COUNTY IS NOT RESPONSIBLE FOR ANY INACCURACIES HEREIN CONTAINED.

COGO =====

Wednesday February 1, 1995

8:27 AM

Coordinate File Name: SEC-10.CRD Lowest pt #: 1 Highest pt #: 112
 Job # : 95-09
 Description: COUNTY COORDINATES SECTION 10 T121 R24
 # of chars. in point descr.: 10

 FROM TYPE BEARING DISTANCE TO NORTHING EASTING

LIST POINTS

POINT NORTHING EASTING ELEVATION DESCR

11	215955.572223	546054.385781		
12	216450.529707	546058.402936		
31	215961.366064	547375.189118		
34	217082.271139	547379.001295		
51	215967.159905	548695.992454		
53	217281.323255	548694.265209		
54	217482.807168	548694.000393		
71	215967.597143	550018.358387		
73	217281.758479	550010.542646		
75	218595.919816	550002.726904		
76	218643.375585	550002.444670		
91	215968.034380	551340.724320		
93	217282.193704	551326.820082		
95	218596.353027	551312.915845		
96	218840.578930	551310.291722		
100	216746.462986	546214.993679		
101	217000.377450	547029.794405		
102	217045.813428	547285.154257		
103	217271.682864	547866.572479		
104	217490.653164	548724.750031		
105	217815.795335	549221.123500		
106	217946.156665	549326.455454		
107	218682.493875	550040.371842		
108	218959.435766	550325.652662		
109	219140.708258	550519.361298		
110	219248.475454	550684.831907		
111	219254.697455	551008.501307		
112	219017.597379	551222.081964		

~~2~~
~~1~~

START				11	215955.572	546054.386
11	INV N	0-27-54.0 E	494.974	12	216450.530	546058.403
12	INV N	65-31-49.8 E	5770.153	96	218840.579	551310.292
96	INV S	0-36-56.2 E	244.240	95	218596.353	551312.916
95	INV S	0-36-22.3 E	2628.466	91	215968.034	551340.724
91	INV S	89-58-51.8 W	2644.732	51	215967.160	548695.992
51	INV S	89-44-55.2 W	2641.632	11	215955.572	546054.386

POINT-POINT ANGLES

ANGLE	51 -	11 -	12:	C.W.	270-42-58.8	C.C.W.	89-17-01.2	494.974
ANGLE	11 -	12 -	96:	C.W.	245-03-55.7	C.C.W.	114-56-04.3	5770.153
ANGLE	12 -	96 -	95:	C.W.	293-51-14.1	C.C.W.	66-08-45.9	244.240
ANGLE	96 -	95 -	91:	C.W.	180-00-33.9	C.C.W.	179-59-26.1	2628.466
ANGLE	95 -	91 -	51:	C.W.	270-35-14.1	C.C.W.	89-24-45.9	2644.732
ANGLE	91 -	51 -	11:	C.W.	179-46-03.4	C.C.W.	180-13-56.6	2641.632

Coordinates stored

Wednesday February 1, 1995

8:29 AM