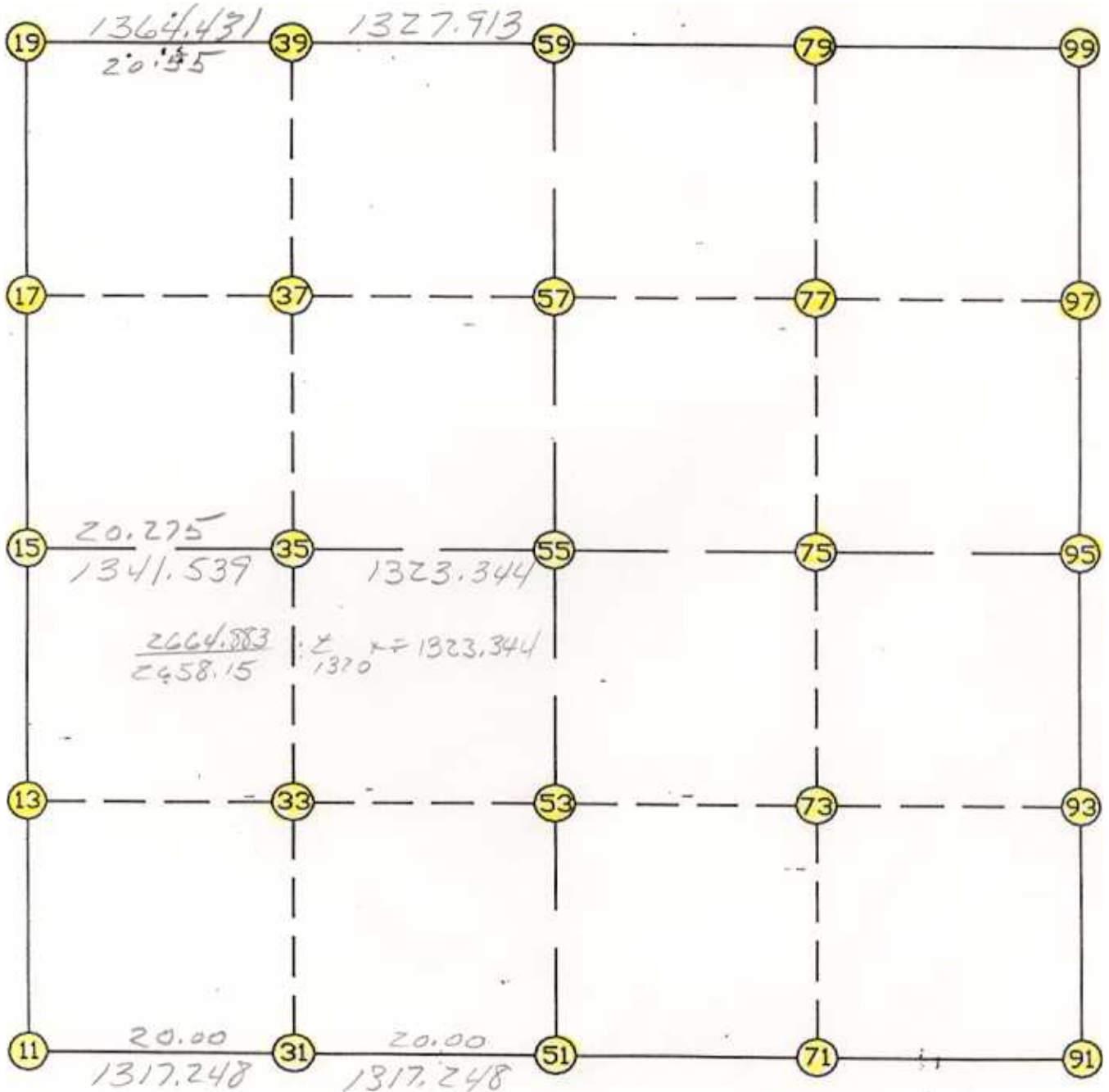


WRIGHT COUNTY SURVEYORS OFFICE

Public Works Building
Buffalo, Minn. 55313

SECTION 31 TOWNSHIP 121 RANGE 23



REMARKS

THE INFORMATION SHOWN HEREON IS A COMPILATION OF WRIGHT COUNTY RECORDS AND IS INTENDED TO BE USED FOR COMPARISON PURPOSES ONLY. THE COUNTY IS NOT RESPONSIBLE FOR ANY INACCURACIES HEREIN CONTAINED.

Job # : 95-08
 Description: COUNTY COORDINATES SECTION 31 T121 R23
 # of chars. in point descr.: 10

 FROM TYPE BEARING DISTANCE TO NORTHING EASTING

LIST POINTS

POINT	NORTHING	EASTING	ELEVATION	DESCR
11	195063.995580	561978.252450		
13	196388.633306	561960.404891		
15	197713.271032	561942.557331		
17	199038.459957	561926.254024		
19	200363.648881	561909.950717		
31	195072.969302	563295.469393		
33	196394.130469	563289.782067		
35	197715.267556	563284.094846		
37	199034.030098	563279.216437		
39	200352.749896	563274.338187		
51	195081.943024	564612.686335		
53	196399.590012	564610.061759		
55	197717.237001	564607.437183		
57	199029.689808	564604.822953		
59	200342.142616	564602.208723		
71	195090.883729	565929.913362		
73	196405.050611	565934.057660		
75	197719.217492	565938.201957		
77	199030.693984	565938.038755		
79	200342.170476	565937.875553		
91	195099.824435	567247.140389		
93	196410.511209	567258.053560		
95	197721.197984	567268.966732		
97	199031.698160	567271.254558		
99	200342.198336	567273.542383		

START			11	195063.996	561978.252
11	INV N	0-46-18.9 W	2649.516	15	197713.271
15	INV N	0-42-17.5 W	2650.578	19	200363.649
19	INV S	89-32-32.4 E	2692.344	59	200342.143
59	INV N	89-59-55.7 E	2671.334	99	200342.198
99	INV S	0-06-00.1 W	2621.004	95	197721.198
95	INV S	0-28-37.4 W	2621.464	91	195099.824
91	INV S	89-36-40.0 W	2634.515	51	195081.943
51	INV S	89-36-34.8 W	2634.495	11	195063.996
START			51	195081.943	564612.686
51	INV N	0-06-50.9 W	2635.299	55	197717.237
55	INV N	0-06-50.9 W	2624.911	59	200342.143
START			15	197713.271	561942.557
15	INV N	89-54-53.0 E	2664.883	55	197717.237
55	INV N	89-54-53.0 E	2661.532	95	197721.198

POINT-POINT ANGLES

ANGLE	51 -	11 -	15:	C.W.	269-37-06.2	C.C.W.	90-22-53.8	2649.516
ANGLE	11 -	15 -	19:	C.W.	180-04-01.5	C.C.W.	179-55-58.5	2650.578
ANGLE	15 -	19 -	59:	C.W.	271-09-45.1	C.C.W.	88-50-14.9	2692.344
ANGLE	19 -	59 -	99:	C.W.	179-32-28.1	C.C.W.	180-27-31.9	2671.334
ANGLE	59 -	99 -	95:	C.W.	270-06-04.4	C.C.W.	89-53-55.6	2621.004
ANGLE	99 -	95 -	91:	C.W.	180-22-37.3	C.C.W.	179-37-22.7	2621.464
ANGLE	95 -	91 -	51:	C.W.	269-08-02.6	C.C.W.	90-51-57.4	2634.515
ANGLE	91 -	51 -	11:	C.W.	179-59-54.8	C.C.W.	180-00-05.2	2634.495