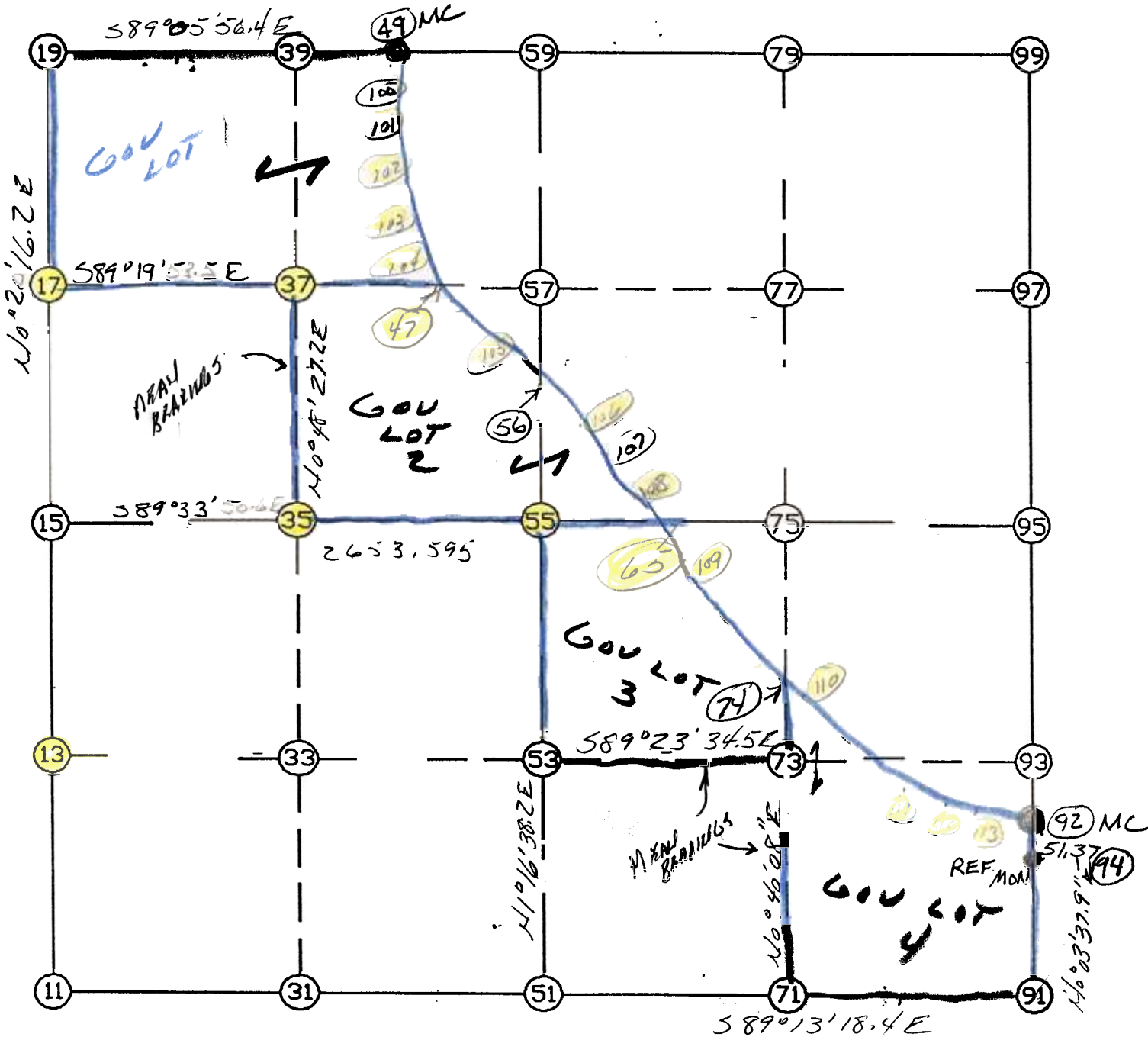


WRIGHT COUNTY SURVEYORS OFFICE

Public Works Building  
Buffalo, Minn. 55313

SECTION 26 TOWNSHIP 121 RANGE 23



REMARKS

ESTABLISHED CENTER SECTION ACCORDING TO  
PLAT OF RIVERSIDE EVERGREENS - FOR MORE  
DETAIL SEE JOB FILE 93-49.

THE INFORMATION SHOWN HEREON IS A COMPILATION OF WRIGHT COUNTY RECORDS AND IS INTENDED TO BE USED FOR COMPARISON PURPOSES ONLY. THE COUNTY IS NOT RESPONSIBLE FOR ANY INACCURACIES HEREIN CONTAINED.

COGO === Saturday January 28, 1995 10:12 AM

Coordinate File Name: SEC-26.CRD Lowest pt #: 1 Highest pt #: 113  
Job # : 95-08  
Description: COUNTY COORDINATES SECTION 26 T121 R23  
# of chars. in point descr.: 10

FROM TYPE	BEARING	DISTANCE	TO	NORTHING	EASTING
LIST POINTS					
POINT	NORTHING	EASTING	ELEVATION	DESCR	
11	200404.845862	583098.852089			
13	201717.290799	583108.317973			
15	203029.735737	583117.783856			<del>1.000000 CORNER</del>
17	204349.155334	583125.563679			
19	205668.574930	583133.343502			CORNER
31	200404.981158	584406.042241			
33	201712.311013	584425.292598			
35	203019.640868	584444.542956			
37	204333.549965	584463.063078			
47	204321.019429	585537.025792			
49	205644.570979	584659.681955			
51	200405.116453	585713.232393			
53	201707.331227	585742.267224			
55	203009.546000	585771.302055			
56	204152.280488	585796.781035			
65	203002.946848	586638.622417			
71	200387.173480	587034.200767			
73	201693.480301	587049.451695			
74	202341.889455	587057.021770			
91	200369.230507	588355.169141			
92	201227.150496	588356.075374			
100	205411.760405	584729.388508			
101	205212.530685	584793.020567			
102	204926.567250	584903.208022			
103	204719.132348	585063.098061			
104	204429.446344	585367.406595			
105	204189.801433	585742.298542			
106	203955.210956	586082.936919			
107	203683.291689	586270.008050			
108	203297.527186	586469.814540			
109	202577.929388	586882.176674			
110	202313.867221	587077.779064			
111	201804.841217	587786.729929			
112	201565.877511	588006.001680			
113	201293.707922	588282.514196			

START					11	200404.846	583098.852	
11	INV N	0-24-47.6 E	2624.958		15	203029.736	583117.784	CORNER
15	INV N	0-20-16.2 E	2638.885		19	205668.575	583133.344	CORNER
19	INV S	89-05-56.4 E	1526.527		49	205644.571	584659.682	
49	INV S	39-55-18.5 E	5759.942		92	201227.150	588356.075	
92	INV S	0-03-37.9 W	857.920		91	200369.231	588355.169	
91	INV N	89-13-18.4 W	2642.180		51	200405.116	585713.232	
51	INV S	89-59-38.7 W	2614.380		11	200404.846	583098.852	
START					51	200405.116	585713.232	
51	INV N	1-16-38.2 E	2605.077		55	203009.546	585771.302	
55	INV N	1-16-38.2 E	1143.018		56	204152.280	585796.781	
START					15	203029.736	583117.784	CORNER
15	INV S	89-33-50.6 E	2653.595		55	203009.546	585771.302	
55	INV S	89-33-50.6 E	867.345		65	203002.947	586638.622	

POINT-POINT ANGLES

ANGLE	51 -	11 -	15:	C.W.	270-25-09.0	C.C.W.	89-34-51.0	2624.958
ANGLE	11 -	15 -	19:	C.W.	179-55-28.6	C.C.W.	180-04-31.4	2638.885
ANGLE	15 -	19 -	49:	C.W.	270-33-47.3	C.C.W.	89-26-12.7	1526.527
ANGLE	19 -	49 -	92:	C.W.	229-10-38.0	C.C.W.	130-49-22.0	5759.942
ANGLE	49 -	92 -	91:	C.W.	219-58-56.4	C.C.W.	140-01-03.6	857.920
ANGLE	92 -	91 -	51:	C.W.	270-43-03.7	C.C.W.	89-16-56.3	2642.180
ANGLE	91 -	51 -	11:	C.W.	179-12-57.1	C.C.W.	180-47-02.9	2614.380

Coordinates stored

Saturday January 28, 1995

10:14 AM