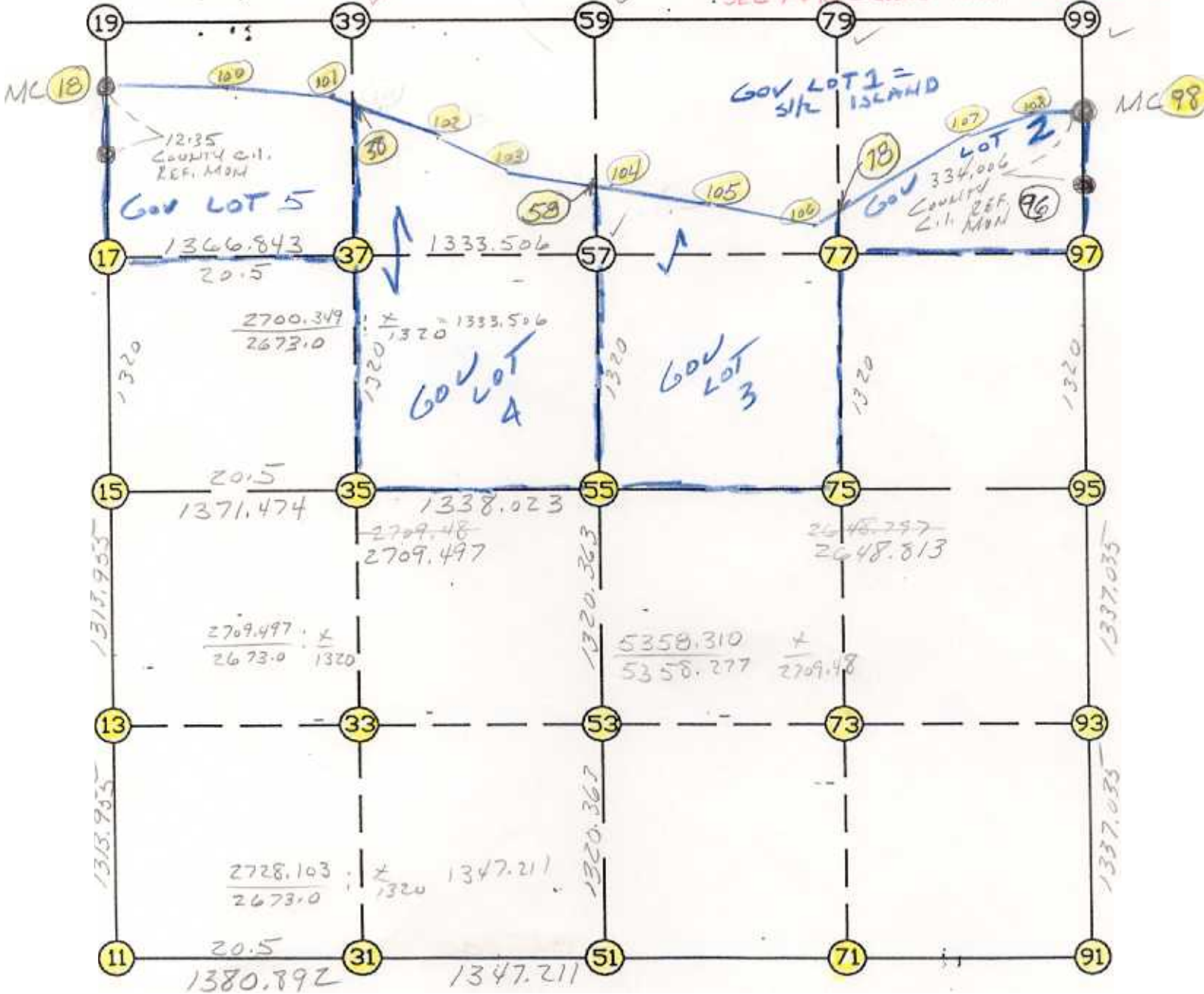


WRIGHT COUNTY SURVEYORS OFFICE

Public Works Building
Buffalo, Minn. 55313

SECTION 18 TOWNSHIP 121 RANGE 23

NOTE: MEANDER OF ISLAND IN
SEC 74 IS = COORD POINT 109 THEN 118



REMARKS

CENTER SECTION TO FIT COUNTY RECORDS
& SURVED BY JOHN OLIVER - FOR DETAILS
SEE JOB FILE 93-49

THE INFORMATION SHOWN HEREON IS A COMPILATION OF WRIGHT COUNTY RECORDS AND IS INTENDED TO BE USED FOR COMPARISON PURPOSES ONLY. THE COUNTY IS NOT RESPONSIBLE FOR ANY INACCURACIES HERFIN CONTAINED.

COGO =====

Friday January 27, 1995

1:50 PM

Coordinate File Name: SEC-18.CRD Lowest pt #: 1 Highest pt #: 118

Job # : 95-08

Description: COUNTY COORDINATES SECTIONS 7 & 18 T121 R23

of chars. in point descr.: 10

FROM TYPE	BEARING	DISTANCE	TO	NORTHING	EASTING
-----------	---------	----------	----	----------	---------

LIST POINTS

POINT	NORTHING	EASTING	ELEVATION	DESCR
11	210941.366517	561820.891869		
13	212255.321199	561822.122463		
15	213569.275881	561823.353057		
17	214889.275418	561824.458913		
18	216072.360002	561825.450065		
31	210932.063987	563201.752534		
33	212249.287064	563189.925418		
35	213566.470983	563178.098654		
37	214886.423725	563191.298938		
38	215864.614478	563201.081406		
51	210922.988350	564548.933431		
53	212243.327217	564540.888841		
55	213563.666085	564532.844250		
57	214883.641584	564524.801873		
58	215253.572167	564522.547952		
71	210903.573893	565873.181963		
73	212232.248950	565865.214876		
75	213560.924007	565857.247790		
77	214880.744358	565838.362579		
78	215132.940748	565834.753919		
91	210884.159437	567197.430494		
93	212221.170684	567189.540912		
95	213558.181930	567181.651330		
97	214877.847131	567151.923285		
98	215972.100519	567127.273082		
100	215996.461006	562514.530968		
101	215878.560326	563165.146515		
102	215686.234836	563660.720216		
103	215523.288172	563953.163653		
104	215139.574486	564763.202895		
105	215015.302704	565142.066405		
106	214939.739487	565665.307622		
107	215723.485269	566352.688338		
108	215920.579163	566871.689299		
109	216102.708000	566302.652000		
110	216324.406897	566153.552782		
111	216476.180565	565937.462707		
112	216510.732532	565613.599729		
113	216366.064908	564277.855899		
114	216168.152335	564541.482017		
115	215979.479392	565037.162530		
116	215882.889422	565594.089301		
117	215941.111955	565891.776263		
118	216056.826655	566208.648199		

START					11	210941.367	561820.892
11	INV N	0-03-13.2 E	2627.911	15	213569.276	561823.353	
15	INV N	0-02-52.8 E	2503.085	18	216072.360	561825.450	
18	INV S	88-54-59.9 E	5302.771	98	215972.101	567127.273	
98	INV S	1-17-25.7 E	2414.531	95	213558.182	567181.651	
95	INV S	0-20-17.1 E	2674.069	91	210884.159	567197.430	
91	INV N	89-09-36.2 W	2648.782	51	210922.988	564548.933	
51	INV N	89-36-50.5 W	2728.103	11	210941.367	561820.892	

START					51	210922.988	564548.933
51	INV N	0-20-56.7 W	2640.727	55	213563.666	564532.844	
55	INV N	0-20-56.7 W	1689.937	58	215253.572	564522.548	
START					15	213569.276	561823.353
15	INV S	89-52-52.9 E	2709.497	55	213563.666	564532.844	
55	INV S	89-52-52.9 E	2648.813	95	213558.182	567181.651	

POINT-POINT ANGLES

ANGLE	51 -	11 -	15:	C.W.	269-40-03.6	C.C.W.	90-19-56.4	2627.911
ANGLE	11 -	15 -	18:	C.W.	179-59-39.6	C.C.W.	180-00-20.4	2503.085
ANGLE	15 -	18 -	98:	C.W.	271-02-07.3	C.C.W.	88-57-52.7	5302.771
ANGLE	18 -	98 -	95:	C.W.	267-37-34.2	C.C.W.	92-22-25.8	2414.531
ANGLE	98 -	95 -	91:	C.W.	180-57-08.6	C.C.W.	179-02-51.4	2674.069
ANGLE	95 -	91 -	51:	C.W.	271-10-40.9	C.C.W.	88-49-19.1	2648.782
ANGLE	91 -	51 -	11:	C.W.	179-32-45.8	C.C.W.	180-27-14.2	2728.103

Coordinates stored Friday January 27, 1995 1:52 PM