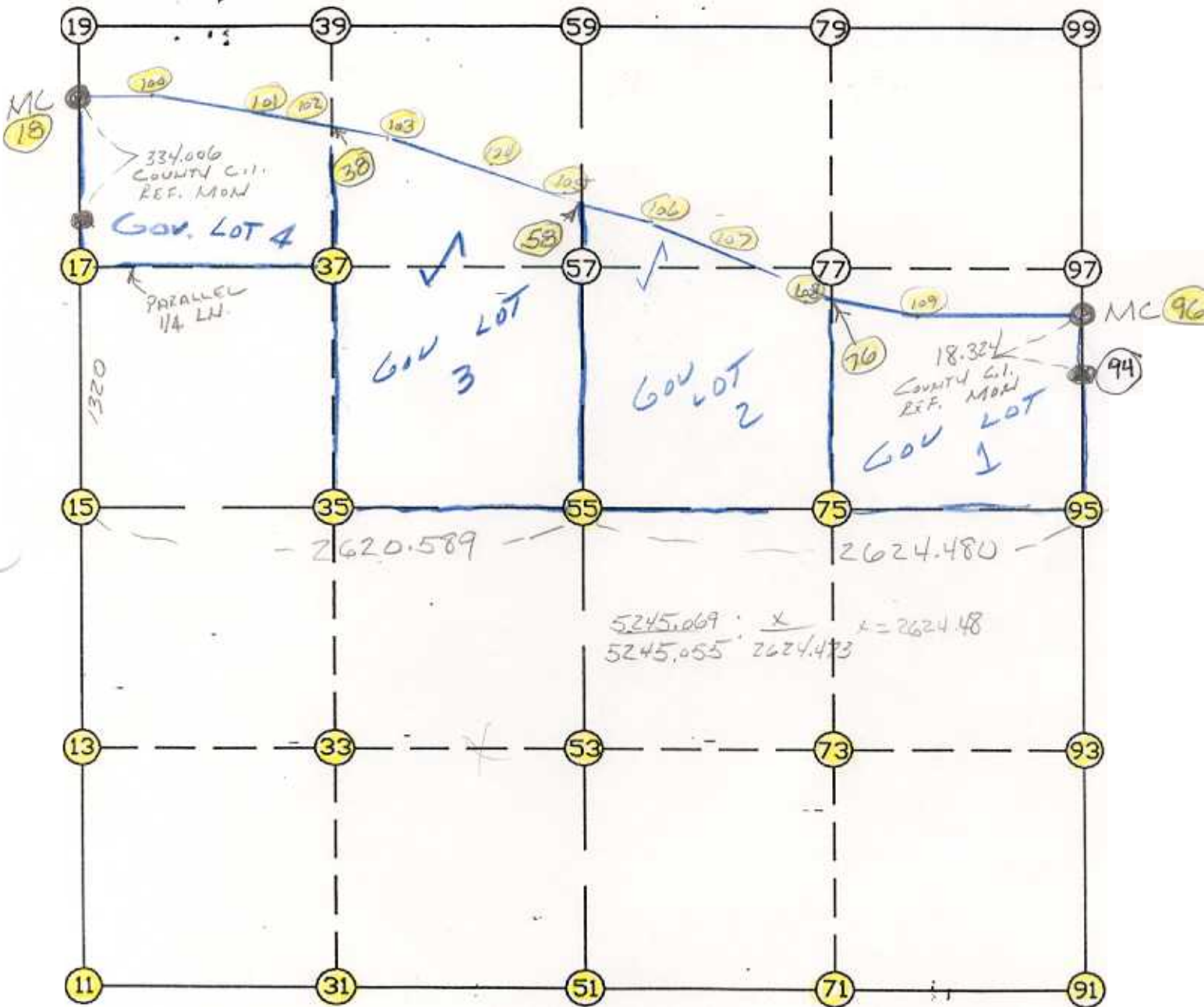


WRIGHT COUNTY SURVEYORS OFFICE

Public Works Building
Buffalo, Minn. 55313

SECTION 17 TOWNSHIP 121 RANGE 23



REMARKS

CENTER SECTION IS BASED ON COUNTY SURVEYORS
RECORDS. FOR FULL DETAILS SEE JOB
FILE 93-49

THE INFORMATION SHOWN HEREON IS A COMPILATION OF WRIGHT COUNTY RECORDS AND IS INTENDED TO BE USED FOR COMPARISON PURPOSES ONLY. THE COUNTY IS NOT RESPONSIBLE FOR ANY INACCURACIES HEREIN CONTAINED.

COGO =====

Friday January 27, 1995

12:55 PM

Coordinate File Name: SEC-17.CRD Lowest pt #: 1 Highest pt #: 111
Job # : 95-08
Description: COUNTY COORDINATES SECTION 17 T121 R23
of chars. in point descr.: 10

FROM TYPE	BEARING	DISTANCE	TO	NORTHING	EASTING

LIST POINTS					
POINT	NORTHING	EASTING	ELEVATION	DESCR	

11	210884.159437	567197.430494			
13	212221.170684	567189.540912			
15	213558.181930	567181.651330			
17	214877.847131	567151.923285			
18	215972.100519	567127.273082			
31	210877.274268	568507.170729			
33	212207.096078	568499.472003			
35	213536.917888	568491.773277			
37	214856.402638	568473.164766			
38	215472.176056	568464.480598			
51	210870.389099	569816.910964			
53	212193.021472	569809.403094			
55	213515.653845	569801.895225			
58	214792.847389	569794.645287			
71	210863.592053	571126.741661			
73	212178.975140	571120.352135			
75	213494.358227	571113.962609			
76	214700.848048	571103.661311			
91	210856.795007	572436.572357			
93	212164.928808	572431.301175			
95	213473.062609	572426.029992			
96	214601.909262	572413.161421			
100	215973.007355	567484.758082			
101	215792.961327	568020.816902			
102	215610.809033	568308.733595			
103	215093.898518	568889.455911			
104	215000.279671	569208.892821			
105	214804.293120	569705.679760			
106	214762.397920	570031.323317			
107	214686.522096	570486.405527			
108	214706.783656	570940.881877			
109	214685.317630	571529.570942			

START					11	210884.159	567197.430
11	INV N	0-20-17.1 W	2674.069		15	213558.182	567181.651
15	INV N	1-17-25.7 W	2414.531		18	215972.101	567127.273
18	INV S	75-28-04.2 E	5460.590		96	214601.909	572413.161
96	INV S	0-39-11.3 E	1128.920		95	213473.063	572426.030
95	INV S	0-13-51.1 E	2616.289		91	210856.795	572436.572
91	INV N	89-42-09.6 W	2619.697		51	210870.389	569816.911
51	INV N	89-41-55.7 W	2619.517		11	210884.159	567197.430

START					51	210870.389	569816.911
51	INV N	0-19-30.8 W	2645.307		55	213515.654	569801.895
55	INV N	0-19-30.8 W	1277.214		58	214792.847	569794.645
START					15	213558.182	567181.651
15	INV S	89-04-12.5 E	2620.589		55	213515.654	569801.895
55	INV S	89-04-12.5 E	2624.480		95	213473.063	572426.030

POINT-POINT ANGLES

ANGLE	51 -	11 -	15:	C.W.	269-21-38.6	C.C.W.	90-38-21.4	2674.069
ANGLE	11 -	15 -	18:	C.W.	179-02-51.4	C.C.W.	180-57-08.6	2414.531
ANGLE	15 -	18 -	96:	C.W.	285-49-21.6	C.C.W.	74-10-38.4	5460.590
ANGLE	18 -	96 -	95:	C.W.	254-48-52.9	C.C.W.	105-11-07.1	1128.920
ANGLE	96 -	95 -	93:	C.W.	180-25-20.1	C.C.W.	179-34-39.9	1308.144
ANGLE	95 -	93 -	91:	C.W.	180-00-00.0	C.C.W.	180-00-00.0	1308.144
ANGLE	93 -	91 -	51:	C.W.	270-31-41.5	C.C.W.	89-28-18.5	2619.697
ANGLE	91 -	51 -	11:	C.W.	180-00-14.0	C.C.W.	179-59-46.0	2619.517

Coordinates stored Friday January 27, 1995 12:57 PM