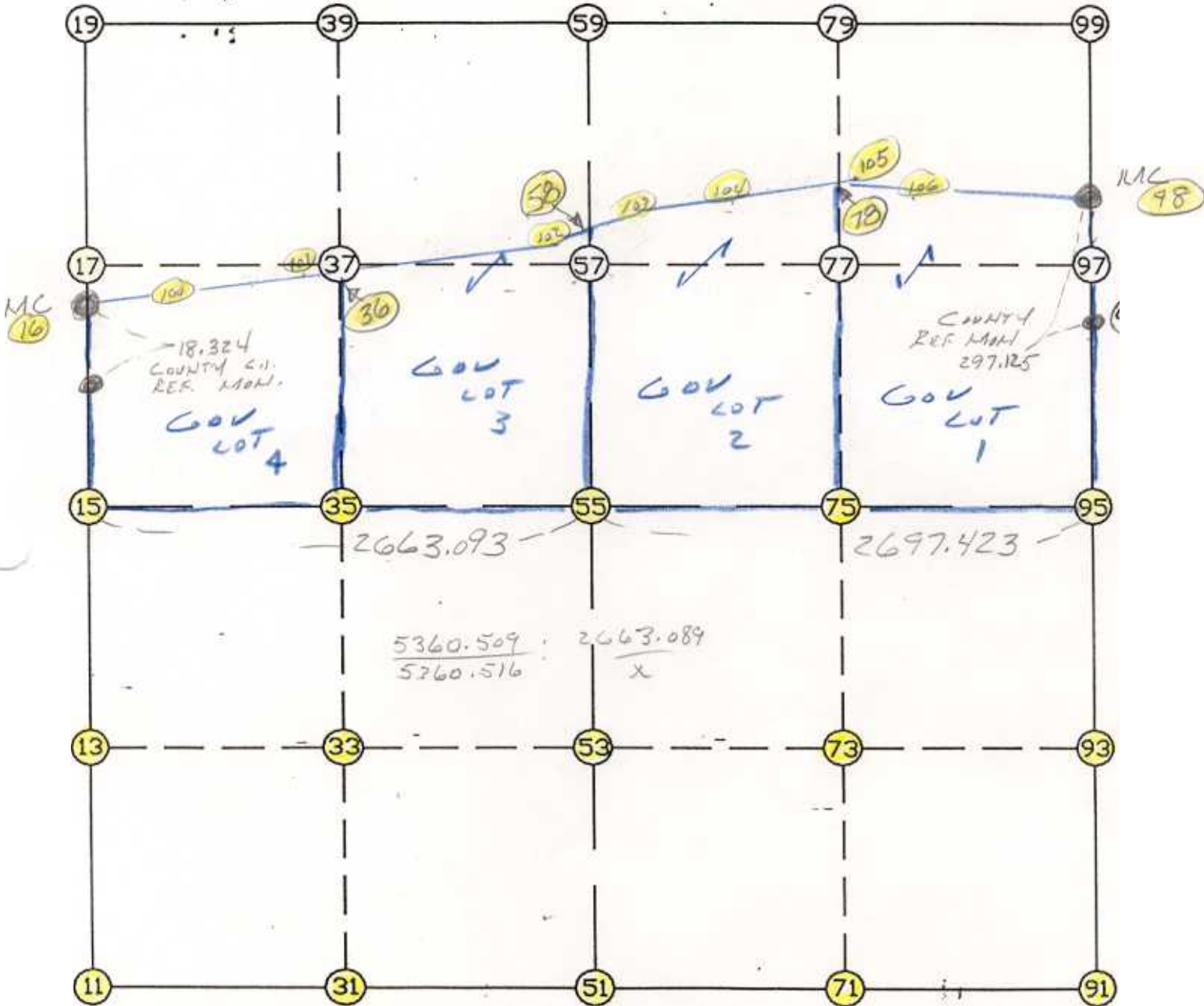


WRIGHT COUNTY SURVEYORS OFFICE

Public Works Building
Buffalo, Minn. 55313

SECTION 16 TOWNSHIP 121 RANGE 23



REMARKS

CENTER SECTION SET ACCORDING TO PLATS OF
MISS. PARKWOOD & ANTELOPE PARK - SEE
JOB 93-49

THE INFORMATION SHOWN HEREON IS A COMPILATION OF WRIGHT COUNTY RECORDS AND IS INTENDED TO BE USED FOR COMPARISON PURPOSES ONLY. THE COUNTY IS NOT RESPONSIBLE FOR ANY INACCURACIES HEREIN CONTAINED.

Job # : 95-08

Description: COUNTY COORDINATES SECTION 16 T121 R23

of chars. in point descr.: 10

FROM TYPE	BEARING	DISTANCE	TO	NORTHING	EASTING
-----------	---------	----------	----	----------	---------

LIST POINTS

POINT	NORTHING	EASTING	ELEVATION	DESCR
11	210856.795007	572436.572357		
13	212164.928808	572431.301175		
15	213473.062609	572426.029992		
16	214601.909262	572413.161421		
31	210868.488272	573772.827649		
33	212177.252386	573765.170564		
35	213486.016500	573757.513480		
36	214767.443793	573745.295308		
51	210880.181538	575109.082940		
53	212189.575964	575099.039954		
55	213498.970391	575088.996968		
58	214803.408026	575078.992000		
71	210887.637194	576446.694520		
73	212199.864232	576442.169611		
75	213512.091271	576437.644702		
78	214708.906312	576436.530609		
91	210895.092850	577784.306100		
93	212210.152501	577785.299268		
95	213525.212151	577786.292436		
98	214938.878314	577794.502017		
100	214671.420622	572886.697553		
101	214764.702886	573691.991331		
102	214826.746651	574898.591744		
103	214732.155353	575629.752824		
104	214611.398681	576254.125941		
105	214730.023225	576476.033400		
106	214786.107485	576683.278557		

START				11	210856.795	572436.572
11	INV N	0-13-51.1 W	2616.289	15	213473.063	572426.030
15	INV N	0-39-11.3 W	1128.920	16	214601.909	572413.161
16	INV N	86-25-00.9 E	5391.880	98	214938.878	577794.502
98	INV S	0-19-57.8 W	1413.690	95	213525.212	577786.292
95	INV S	0-02-35.8 W	2630.120	91	210895.093	577784.306
91	INV S	89-40-50.3 W	2675.265	51	210880.182	575109.083
51	INV S	89-29-55.1 W	2672.613	11	210856.795	572436.572

START				51	210880.182	575109.083
51	INV N	0-26-22.0 W	2618.866	55	213498.970	575088.997
55	INV N	0-26-22.0 W	1304.476	58	214803.408	575078.992
START				15	213473.063	572426.030
15	INV N	89-26-33.3 E	2663.093	55	213498.970	575088.997
55	INV N	89-26-33.3 E	2697.423	95	213525.212	577786.292

POINT-POINT ANGLES

ANGLE	51 - 11 - 15:	C.W. 270-16-13.8	C.C.W. 89-43-46.2	2616.289
ANGLE	11 - 15 - 16:	C.W. 179-34-39.9	C.C.W. 180-25-20.1	1128.920
ANGLE	15 - 16 - 98:	C.W. 267-04-12.2	C.C.W. 92-55-47.8	5391.880
ANGLE	16 - 98 - 95:	C.W. 273-54-56.9	C.C.W. 86-05-03.1	1413.690
ANGLE	98 - 95 - 91:	C.W. 179-42-37.9	C.C.W. 180-17-22.1	2630.120
ANGLE	95 - 91 - 51:	C.W. 269-38-14.5	C.C.W. 90-21-45.5	2675.265
ANGLE	91 - 51 - 11:	C.W. 179-49-04.7	C.C.W. 180-10-55.3	2672.613