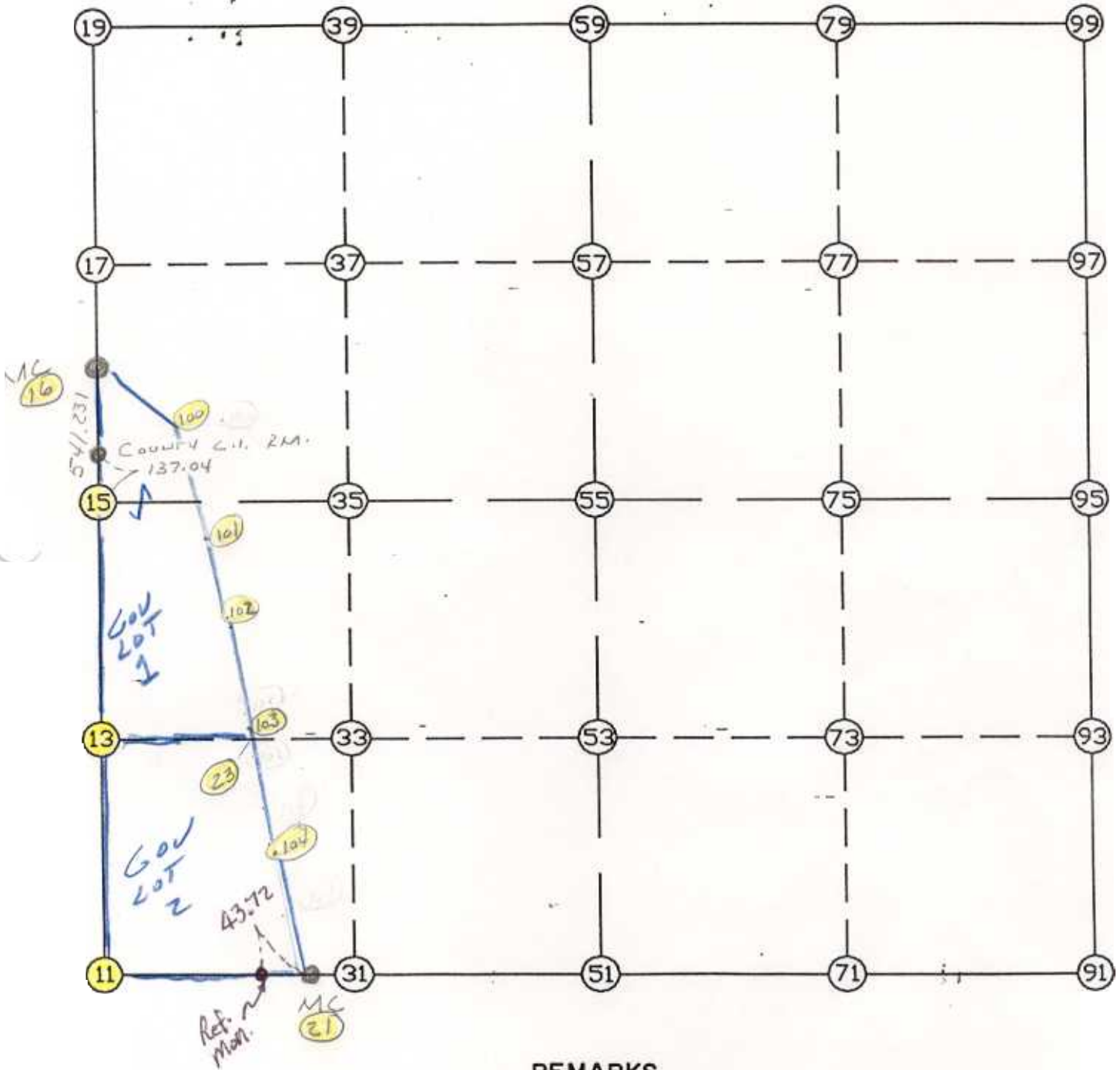


WRIGHT COUNTY SURVEYORS OFFICE

Public Works Building
Buffalo, Minn. 55313

SECTION 14 TOWNSHIP 121 RANGE 23



REMARKS

NORTH LINE GOV LOT 2 RUN PARALLEL
WITH SOUTH LINE OF SECTION 14

THE INFORMATION SHOWN HEREON IS A COMPILATION OF WRIGHT COUNTY RECORDS AND IS INTENDED TO BE USED FOR COMPARISON PURPOSES ONLY. THE COUNTY IS NOT RESPONSIBLE FOR ANY INACCURACIES HEREIN CONTAINED.

===== COGO =====

Thursday January 26, 1995

3:15 PM

Coordinate File Name: SEC-14.CRD Lowest pt #: 1 Highest pt #: 104
 Job # : 95-08
 Description: COUNTY COORDINATES SECTION 14 T121 R23
 # of chars. in point descr.: 10

FROM	TYPE	BEARING	DISTANCE	TO	NORTHING	EASTING

LIST POINTS						
POINT		NORTHING	EASTING		ELEVATION	DESCR

11		210929.491847	583125.009827			
13		212246.763114	583114.864358			
15		213564.034381	583104.718890			
16		214103.096379	583153.125936			
21		210921.508170	584324.872638			
23		212240.088031	584118.095548			
100		213742.428235	583421.557861			
101		212830.957390	583930.125381			
102		212529.604127	584050.221657			
103		212308.716699	584108.602249			
104		211589.187000	584208.133695			

START						
21	INV N	89-37-07.6 W	1199.889	11	210929.492	583125.010
11	INV N	0-26-28.6 W	2634.621	15	213564.034	583104.719
15	INV N	5-07-52.8 E	541.231	16	214103.096	583153.126

POINT-POINT ANGLES						
ANGLE	21 -	11 -	15:	C.W.	269-10-39.0	C.C.W. 90-49-21.0 2634.621
ANGLE	11 -	15 -	16:	C.W.	185-34-21.4	C.C.W. 174-25-38.6 541.231

Coordinates stored Thursday January 26, 1995 3:16 PM