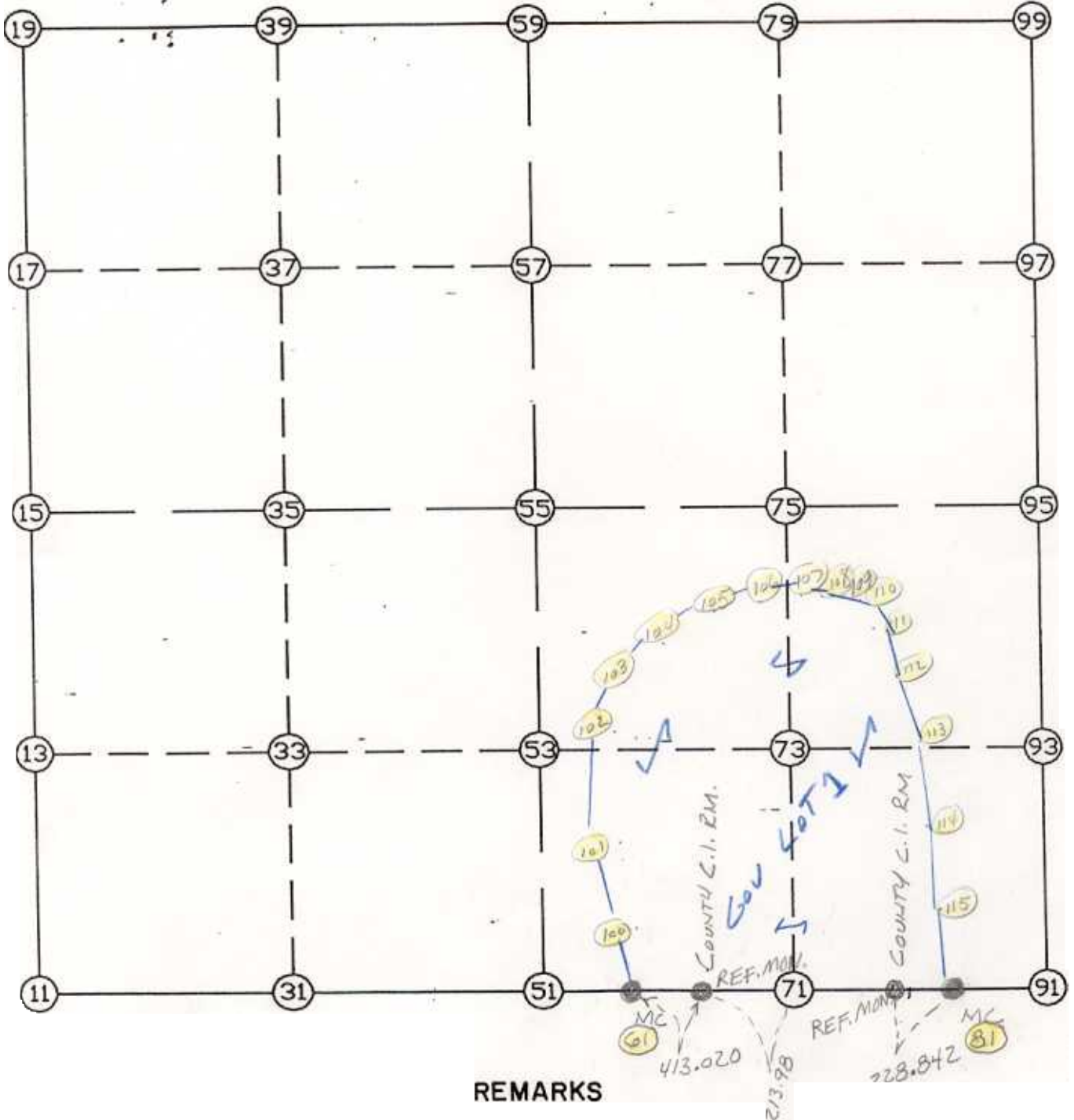


WRIGHT COUNTY SURVEYORS OFFICE

Public Works Building
Buffalo, Minn. 55313

SECTION 10 TOWNSHIP 121 RANGE 23



REMARKS

THE INFORMATION SHOWN HEREON IS A COMPILATION OF WRIGHT COUNTY RECORDS AND IS INTENDED TO BE USED FOR COMPARISON PURPOSES ONLY. THE COUNTY IS NOT RESPONSIBLE FOR ANY INACCURACIES HEREIN CONTAINED.

COGO

hursday January 26, 1995

2:51 PM

Coordinate File Name: SEC-10.CRD Lowest pt #: 1 Highest pt #: 115
 Job # : 95-08
 Description: COUNTY COORDINATES SECTION 10 T121 R23
 # of chars. in point descr.: 10

FROM TYPE	BEARING	DISTANCE	TO	NORTHING	EASTING
LIST POINTS					
POINT	NORTHING	EASTING	ELEVATION	DESCR	
61	216190.538173	581159.422209		WEST	
81	216173.608171	582677.328246		EAST	
100	216353.103618	581173.607933			
101	216747.106071	581159.612980			
102	217393.362593	581033.259903			
103	217913.301625	581110.600673			
104	218087.501083	581199.324211			
105	218159.474745	581450.482820			
106	218176.506142	581777.517889			
107	218153.355944	581837.808283			
108	218063.656627	581933.953362			
109	217961.157056	582016.914896			
110	217725.459571	582136.866663			
111	217565.106075	582179.784473			
112	217305.683991	582234.806070			
113	217123.512017	582313.939740			
114	216937.950817	582385.095139			
115	216776.110394	582422.411221			

START
 41 NV S 89-21-39.5 E 1518.000 61 216190.538 581159.422 WEST
 81 216173.608 582677.328 EAST