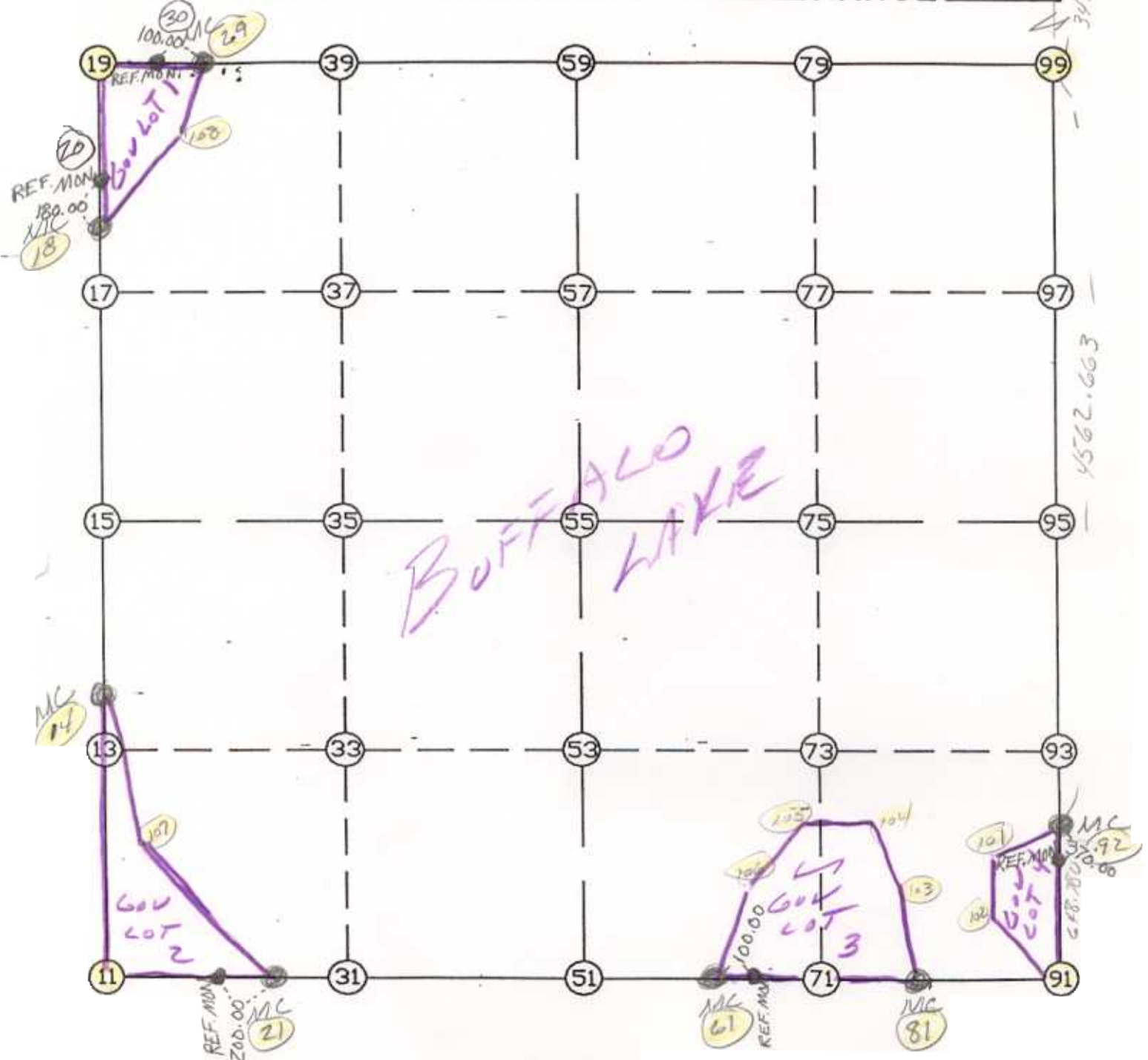


WRIGHT COUNTY SURVEYORS OFFICE

Public Works Building
Buffalo, Minn. 55313

SECTION 36 TOWNSHIP 120 RANGE 26



REMARKS

NE SET ON TOWN LINE IN PROPORTION BETWEEN
MIC'S

THE INFORMATION SHOWN HEREON IS A COMPILATION OF WRIGHT COUNTY RECORDS AND IS INTENDED TO BE USED FOR COMPARISON PURPOSES ONLY. THE COUNTY IS NOT RESPONSIBLE FOR ANY INACCURACIES HEREIN CONTAINED.

==== COGO =====

Thursday June 1, 1995

1:53 PM

Coordinate File Name: SEC-36.CRD Lowest pt #: 1 Highest pt #: 108
 Job # : 95-27
 Description: COUNTY COORDINATES SECTION 36 T120 R26
 # of chars. in point descr.: 10

FROM TYPE	BEARING	DISTANCE	TO	NORTHING	EASTING
LIST POINTS					
POINT	NORTHING	EASTING	ELEVATION	DESCR	
11	163397.451873	492936.352918			
14	164747.340315	492945.286022			
18	167479.226497	492963.364720			
19	168539.858421	492970.383622			
21	163376.153434	494034.805292			
29	168537.819238	493245.269059			
61	163326.121755	496615.664560			
81	163306.142201	497602.676502			
91	163288.693525	498307.530441			
92	163937.465101	498310.836660			
99	168500.068855	498334.088247			
100	171998.910290	498351.918770			
101	163790.301347	498115.323153			
102	163554.838982	498077.586400			
103	163668.861219	497481.149196			
104	164097.097027	497299.159107			
105	164100.649362	497098.739669			
106	163777.131412	496817.000424			
107	163989.549597	493087.142506			
108	168062.454097	493198.167969			

START								
11	INV N	0-22-45.0 E	1349.918	14	164747.340	492945.286		
14	INV N	0-22-45.0 E	2731.946	18	167479.226	492963.365		
18	INV N	0-22-45.0 E	1060.655	19	168539.858	492970.384		
19	INV S	89-34-29.9 E	274.893	29	168537.819	493245.269		
29	INV S	89-34-29.9 E	5088.959	99	168500.069	498334.088		
99	INV S	0-17-31.1 W	4562.663	92	163937.465	498310.837		
92	INV S	0-17-31.1 W	648.780	91	163288.694	498307.530	36-12	
91	INV N	88-34-55.0 W	705.070	81	163306.142	497602.677		
81	INV N	88-50-25.3 W	987.214	61	163326.122	496615.665		
61	INV N	88-53-21.9 W	2581.344	21	163376.153	494034.805		
21	INV N	88-53-21.1 W	1098.659	11	163397.452	492936.353		

POINT-POINT ANGLES

ANGLE	21 -	11 -	14:	C.W.	269-16-06.1	C.C.W.	90-43-53.9	1349.918
ANGLE	11 -	14 -	18:	C.W.	180-00-00.0	C.C.W.	180-00-00.0	2731.946
ANGLE	14 -	18 -	19:	C.W.	180-00-00.0	C.C.W.	180-00-00.0	1060.655
ANGLE	18 -	19 -	29:	C.W.	270-02-45.1	C.C.W.	89-57-14.9	274.893
ANGLE	19 -	29 -	99:	C.W.	180-00-00.0	C.C.W.	180-00-00.0	5088.959
ANGLE	29 -	99 -	92:	C.W.	269-52-01.0	C.C.W.	90-07-59.0	4562.663
ANGLE	99 -	92 -	91:	C.W.	180-00-00.0	C.C.W.	180-00-00.0	648.780
ANGLE	92 -	91 -	81:	C.W.	271-07-33.9	C.C.W.	88-52-26.1	705.070
ANGLE	91 -	81 -	61:	C.W.	179-44-29.7	C.C.W.	180-15-30.3	987.214
ANGLE	81 -	61 -	21:	C.W.	179-57-03.3	C.C.W.	180-02-56.7	2581.344
ANGLE	61 -	21 -	11:	C.W.	180-00-00.8	C.C.W.	179-59-59.2	1098.659

Coordinates stored

Thursday June 1, 1995

1:54 PM