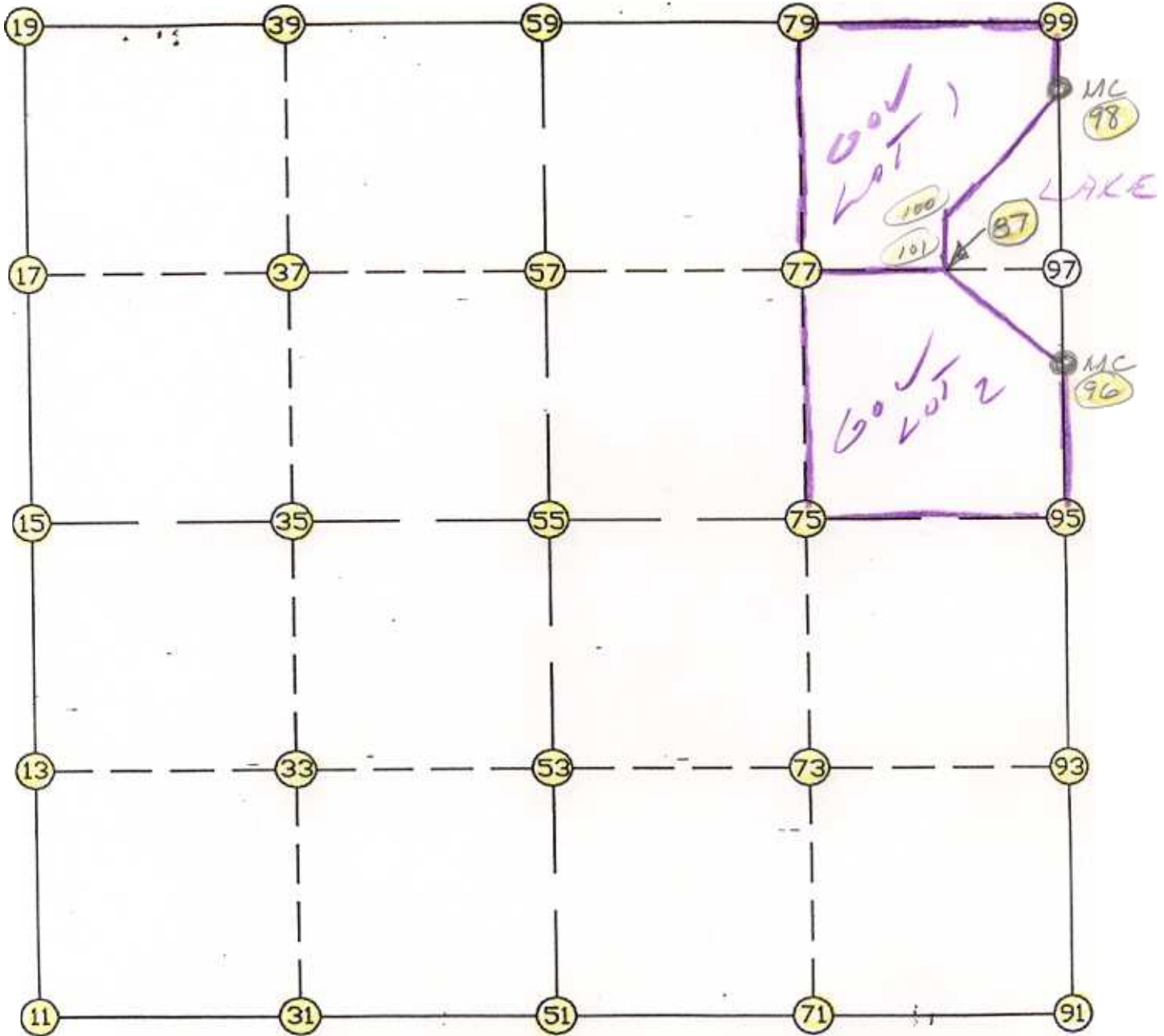


WRIGHT COUNTY SURVEYORS OFFICE

Public Works Building  
Buffalo, Minn. 55313

SECTION 33 TOWNSHIP 120 RANGE 26



REMARKS

---

---

---

THE INFORMATION SHOWN HEREON IS A COMPILATION OF WRIGHT COUNTY RECORDS AND IS INTENDED TO BE USED FOR COMPARISON PURPOSES ONLY. THE COUNTY IS NOT RESPONSIBLE FOR ANY INACCURACIES HEREIN CONTAINED.

===== COGO =====

Thursday June 1, 1995

11:45 AM

Coordinate File Name: SEC-33.CRD    Lowest pt #:    1    Highest pt #:    101  
 Job #                    : 95-27  
 Description: COUNTY COORDINATES SECTION 33 T120 R26  
 # of chars. in point descr.: 10

-----  
 FROM TYPE                    BEARING    DISTANCE            TO            NORTHING            EASTING  
 -----

LIST POINTS

POINT	NORTHING	EASTING	ELEVATION	DESCR
11	163621.358838	477159.815526		<del>4-119-26</del>
13	164904.760827	477192.318830		
15	166188.162817	477224.822134		
17	167447.486619	477285.016649		
19	168706.810420	477345.211165		
31	163597.736364	478476.995093		
33	164869.096378	478516.832062		
35	166140.456393	478556.669032		
37	167417.396268	478611.011566		
39	168694.336144	478665.354099		
51	163574.113891	479794.174659		<del>4-119-26</del>
53	164833.431929	479841.345295		
55	166092.749968	479888.515930		
57	167387.305918	479937.006482		
59	168681.861867	479985.497034		
71	163557.038245	481111.659730		
73	164801.104559	481164.233929		
75	166045.170872	481216.808128		
77	167347.610722	481246.080174		
79	168650.050571	481275.352220		
87	167317.734465	482231.343513		
91	163539.962600	482429.144800		<del>3-119-26</del>
93	164768.777188	482487.122563		
95	165997.591776	482545.100327		
96	167124.470243	482553.746372		
97	167307.915526	482555.153867		
98	168366.001700	482563.272099		
99	168618.239275	482565.207407		
100	167637.847613	482086.301038		
101	167383.324258	482121.926798		

START					11	163621.359	477159.816	4-119-26
11	INV N	1-27-02.7 E	2567.627		15	166188.163	477224.822	
15	INV N	2-44-11.8 E	2521.523		19	168706.810	477345.211	
19	INV S	89-27-31.0 E	2640.404		59	168681.862	479985.497	
59	INV S	88-35-14.0 E	2580.495		99	168618.239	482565.207	
99	INV S	0-26-22.5 W	252.245		98	168366.002	482563.272	
98	INV S	0-26-22.5 W	1241.568		96	167124.470	482553.746	
96	INV S	0-26-22.5 W	1126.912		95	165997.592	482545.100	
95	INV S	2-42-04.7 W	2460.363		91	163539.963	482429.145	3-119-26
91	INV N	89-15-26.8 W	2635.191		51	163574.114	479794.175	4-119-26
51	INV N	88-58-21.2 W	2634.783		11	163621.359	477159.816	4-119-26
START					51	163574.114	479794.175	4-119-26
51	INV N	2-08-42.5 E	2520.402		55	166092.750	479888.516	
55	INV N	2-08-42.5 E	2590.928		59	168681.862	479985.497	
START					15	166188.163	477224.822	
15	INV S	87-56-54.8 E	2665.402		55	166092.750	479888.516	
55	INV S	87-56-54.8 E	2658.288		95	165997.592	482545.100	

POINT-POINT ANGLES

ANGLE 51 - 11 - 12: C.W. 160-02-43.3 C.C.W. 199-57-16.7504433.780

POINT-POINT ANGLES

ANGLE	51 -	11 -	15:	C.W.	270-25-23.9	C.C.W.	89-34-36.1	2567.627
ANGLE	11 -	15 -	19:	C.W.	181-17-09.0	C.C.W.	178-42-51.0	2521.523
ANGLE	15 -	19 -	59:	C.W.	267-48-17.2	C.C.W.	92-11-42.8	2640.404
ANGLE	19 -	59 -	99:	C.W.	180-52-17.0	C.C.W.	179-07-43.0	2580.495
ANGLE	59 -	99 -	98:	C.W.	269-01-36.5	C.C.W.	90-58-23.5	252.245
ANGLE	99 -	98 -	96:	C.W.	180-00-00.0	C.C.W.	180-00-00.0	1241.568
ANGLE	98 -	96 -	95:	C.W.	180-00-00.0	C.C.W.	180-00-00.0	1126.912
ANGLE	96 -	95 -	91:	C.W.	182-15-42.2	C.C.W.	177-44-17.8	2460.363
ANGLE	95 -	91 -	51:	C.W.	268-02-28.5	C.C.W.	91-57-31.5	2635.191
ANGLE	91 -	51 -	11:	C.W.	180-17-05.6	C.C.W.	179-42-54.4	2634.783

Coordinates stored

Thursday June 1, 1995

11:46 AM