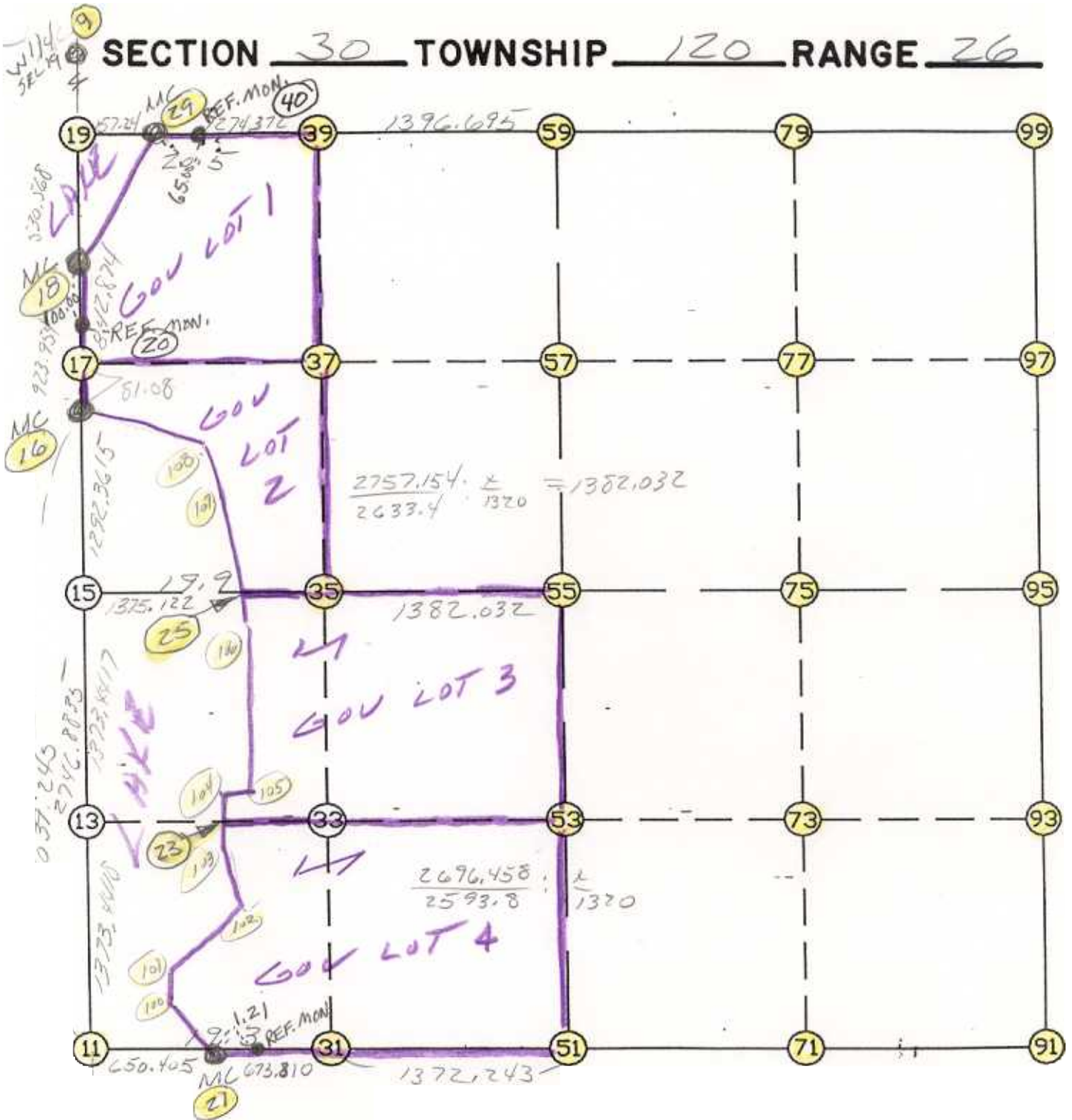


WRIGHT COUNTY SURVEYORS OFFICE

Public Works Building
Buffalo, Minn. 55313

SECTION 30 TOWNSHIP 120 RANGE 26



REMARKS

SW & NW SET ON TOWN LINE GOV PROPORTION
ALONG LINE - W/4 SET MIDWAY BETWEEN
SECTION CORNERS

THE INFORMATION SHOWN HEREON IS A COMPILATION OF WRIGHT COUNTY RECORDS
AND IS INTENDED TO BE USED FOR COMPARISON PURPOSES ONLY. THE
COUNTY IS NOT RESPONSIBLE FOR ANY INACCURACIES HEREIN CONTAINED.

==== COGO ====

Wednesday May 31, 1995

3:06 PM

Coordinate File Name: SEC-30.CRD Lowest pt #: 1 Highest pt #: 108
Job # : 95-27
Description: COUNTY COORDINATES SECTION 30 T120 R26
of chars. in point descr.: 10

FROM TYPE	BEARING	DISTANCE	TO	NORTHING	EASTING
LIST POINTS					
POINT	NORTHING	EASTING	ELEVATION	DESCR	
9	176989.649429	466658.975060			
10	167502.539710	466718.007766			
11	168971.028591	466708.920068			
13	170344.444042	466700.420728			
15	171717.859493	466691.921388			
16	173010.196414	466683.923800			
17	173091.274816	466683.414754			
18	173934.132064	466678.122922			
19	174464.689647	466674.798103			
21	169070.527159	467351.669755			
23	170337.715259	467440.803313			
25	171695.267866	467440.926572			
29	174458.106848	466831.900456			
31	169048.842035	468025.130837			
35	171676.401674	468066.418301			
37	173039.989844	468085.760975			
39	174403.520070	468105.102827			
51	169004.679356	469396.663012			
53	170319.707443	469422.242526			
55	171634.735530	469447.822040			
57	172989.214606	469474.168943			
59	174343.693682	469500.515845			
71	168936.249228	470716.340679			
73	170265.555354	470743.075589			
75	171594.861480	470769.810499			
77	172936.284102	470798.918144			
79	174277.706723	470828.025790			
91	168867.819099	472036.018345			
93	170211.403264	472063.908652			
95	171554.987430	472091.798958			
97	172883.353598	472123.667346			
99	174211.719765	472155.535735			
100	169269.125282	467004.393493			
101	169356.875581	467004.338179			
102	169595.450906	467454.966347			
103	170074.065864	467390.036538			
104	170383.643404	467449.646966			
105	170404.315229	467567.408976			
106	171212.602971	467520.046348			
107	171851.506515	467415.315496			
108	172384.772224	467217.980822			

START					11	168971.029	466708.920
11	INV N	0-21-16.4 W	2746.884	15	171717.859	466691.921	
15	INV N	0-21-16.4 W	1292.362	16	173010.196	466683.924	
16	INV N	0-21-35.0 W	923.954	18	173934.132	466678.123	
18	INV N	0-21-32.6 W	530.568	19	174464.690	466674.798	
19	INV S	87-36-02.3 E	157.240	29	174458.107	466831.900	
29	INV S	87-32-42.1 E	2671.067	59	174343.694	469500.516	
59	INV S	87-09-15.6 E	2658.298	99	174211.720	472155.536	
99	INV S	1-22-27.5 W	2657.497	95	171554.987	472091.799	
95	INV S	1-11-21.1 W	2687.747	91	168867.819	472036.018	
91	INV N	87-01-54.0 W	2642.901	51	169004.679	469396.663	
51	INV N	88-09-20.7 W	2046.053	21	169070.527	467351.670	
21	INV S	81-12-01.4 W	650.405	11	168971.029	466708.920	
START				51	169004.679	469396.663	
51	INV N	1-06-51.7 E	2630.554	55	171634.736	469447.822	
55	INV N	1-06-51.7 E	2709.471	59	174343.694	469500.516	
START				15	171717.859	466691.921	
15	INV S	88-16-20.5 E	2757.154	55	171634.736	469447.822	
55	INV S	88-16-20.5 E	2645.179	95	171554.987	472091.799	

POINT-POINT ANGLES

ANGLE	21 -	11 -	15:	C.W.	278-26-42.2	C.C.W.	81-33-17.8	2746.884
ANGLE	11 -	15 -	16:	C.W.	180-00-00.0	C.C.W.	180-00-00.0	1292.362
ANGLE	15 -	16 -	18:	C.W.	179-59-41.4	C.C.W.	180-00-18.6	923.954
ANGLE	16 -	18 -	19:	C.W.	180-00-02.4	C.C.W.	179-59-57.6	530.568
ANGLE	18 -	19 -	29:	C.W.	272-45-30.3	C.C.W.	87-14-29.7	157.240
ANGLE	19 -	29 -	59:	C.W.	180-03-20.2	C.C.W.	179-56-39.8	2671.067
ANGLE	29 -	59 -	99:	C.W.	180-23-26.5	C.C.W.	179-36-33.5	2658.298
ANGLE	59 -	99 -	95:	C.W.	268-31-43.0	C.C.W.	91-28-17.0	2657.497
ANGLE	99 -	95 -	91:	C.W.	179-48-53.6	C.C.W.	180-11-06.4	2687.747
ANGLE	95 -	91 -	51:	C.W.	271-46-45.0	C.C.W.	88-13-15.0	2642.901
ANGLE	91 -	51 -	21:	C.W.	178-52-33.3	C.C.W.	181-07-26.7	2046.053
ANGLE	51 -	21 -	11:	C.W.	169-21-22.0	C.C.W.	190-38-38.0	650.405

Coordinates stored

Wednesday May 31, 1995

3:07 PM