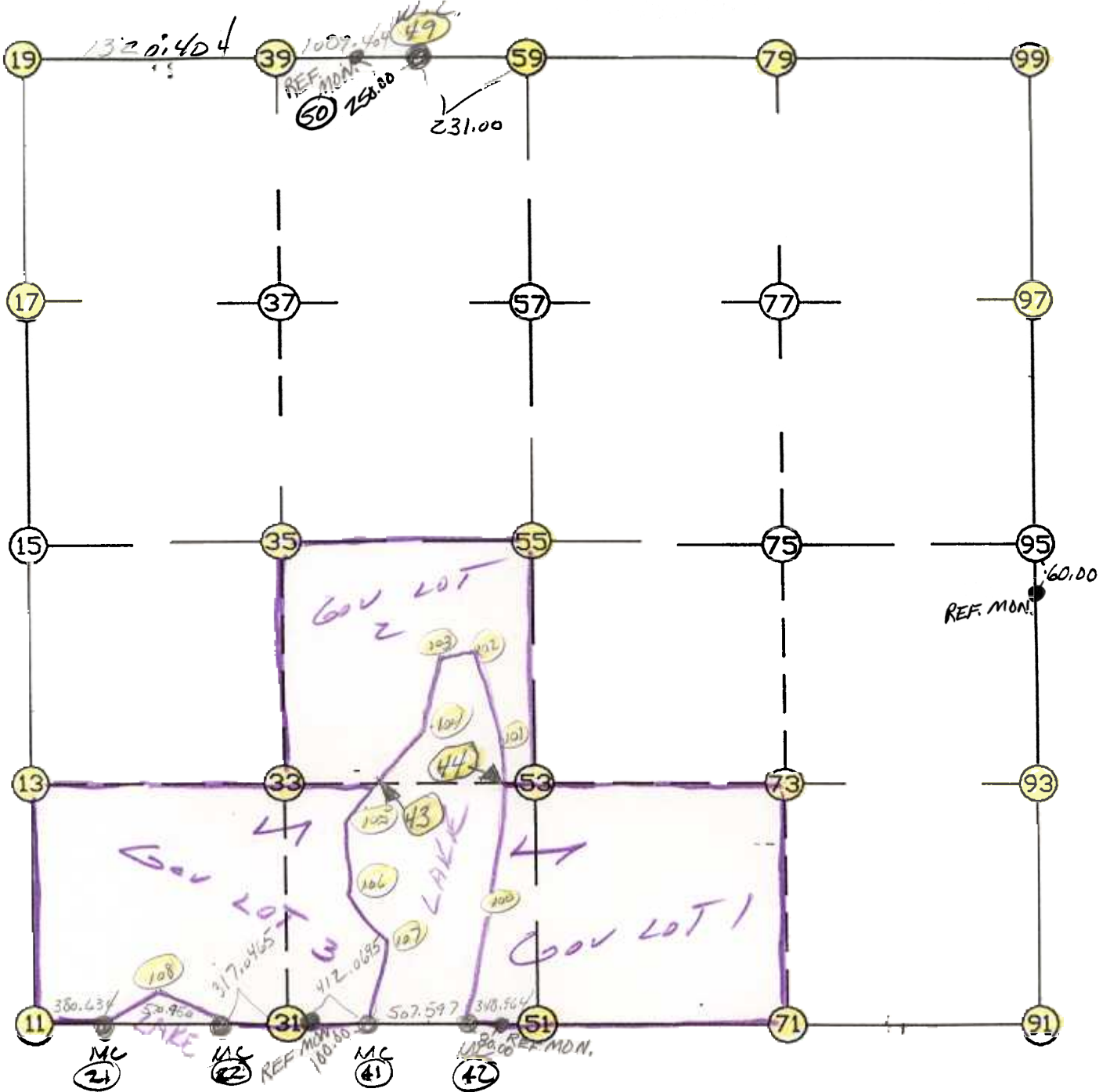


WRIGHT COUNTY SURVEYORS OFFICE

Public Works Building
Buffalo, Minn. 55313

SECTION 27 TOWNSHIP 120 RANGE 26



REMARKS

THE INFORMATION SHOWN HEREON IS A COMPILATION OF WRIGHT COUNTY RECORDS AND IS INTENDED TO BE USED FOR COMPARISON PURPOSES ONLY. THE COUNTY IS NOT RESPONSIBLE FOR ANY INACCURACIES HEREIN CONTAINED.

===== COGO =====

Wednesday May 31, 1995

1:09 PM

Coordinate File Name: SEC-27.CRD Lowest pt #: 1 Highest pt #: 108
Job # : 95-27
Description: COUNTY COORDINATES SECTION 27 T120 R26
of chars. in point descr.: 10

FROM TYPE	BEARING	DISTANCE	TO	NORTHING	EASTING

LIST POINTS					
POINT	NORTHING	EASTING	ELEVATION	DESCR	

11	168618.239275	482565.207407			
13	169925.229745	482633.700520			
15	171232.220215	482702.193634			
17	172535.786295	482783.577122			
19	173839.352375	482864.960611			
21	168626.622029	482945.749213			
22	168639.196134	483516.560736			
31	168646.152563	483833.531059			
33	169904.263792	483916.716734			
35	171203.203863	484002.601991			
37	172480.204988	484092.726499			
39	173747.424889	484182.160695			
41	168655.193920	484245.501358			
42	168618.031685	484751.736603			
43	169893.758124	484559.613488			
44	169885.568590	485060.773820			
49	173671.579759	485268.921743			
51	168592.354252	485099.754875			
53	169883.270882	485201.382612			
55	171174.187511	485303.010349			
57	172424.641648	485401.452666			
59	173675.095785	485499.894983			
71	168541.891906	486422.663589			
73	169843.729353	486504.175547			
75	171145.566800	486585.687504			
77	172419.669494	486656.232329			
79	173693.772189	486726.777155			
91	168491.429560	487745.572304			
93	169804.187825	487806.968482			
95	171116.946089	487868.364660			
97	172414.697341	487911.011993			
99	173712.448592	487953.659326			
100	169248.251025	484981.464857			
101	170077.873735	485084.704624			
102	170369.738835	484920.181458			
103	170363.005272	484809.112040			
104	170057.779049	484710.037989			
105	169845.343295	484515.211980			
106	169217.493383	484248.926382			
107	168901.213801	484313.650001			
108	168704.298499	483204.459033			

START				11	168618.239	482565.207
11	INV N	2-59-59.5 E	2617.568	15	171232.220	482702.194
15	INV N	3-34-20.7 E	2612.208	19	173839.352	482864.961
19	INV S	86-00-28.1 E	2409.808	49	173671.580	485268.922
49	INV N	89-07-40.3 E	231.000	59	173675.096	485499.895
59	INV N	89-07-40.3 E	2454.049	99	173712.449	487953.659
99	INV S	1-52-55.9 W	2596.904	95	171116.946	487868.365
95	INV S	2-40-39.7 W	2628.386	91	168491.430	487745.572
91	INV N	87-48-55.8 W	2647.742	51	168592.354	485099.755
51	INV N	85-46-48.9 W	348.964	42	168618.032	484751.737
42	INV N	85-48-05.4 W	507.597	41	168655.194	484245.501
41	INV S	88-44-33.9 W	729.116	22	168639.196	483516.561
22	INV S	88-44-17.0 W	570.950	21	168626.622	482945.749
21	INV S	88-44-17.0 W	380.634	11	168618.239	482565.207
START				51	168592.354	485099.755
51	INV N	4-30-04.8 E	2589.822	55	171174.188	485303.010
55	INV N	4-30-04.8 E	2508.646	59	173675.096	485499.895
START				15	171232.220	482702.194
15	INV S	88-43-18.3 E	2601.464	55	171174.188	485303.010
55	INV S	88-43-18.3 E	2565.993	95	171116.946	487868.365

POINT-POINT ANGLES

ANGLE	21 -	11 -	15:	C.W.	274-15-42.4	C.C.W.	85-44-17.6	2617.568
ANGLE	11 -	15 -	19:	C.W.	180-34-21.2	C.C.W.	179-25-38.8	2612.208
ANGLE	15 -	19 -	49:	C.W.	270-25-11.2	C.C.W.	89-34-48.8	2409.808
ANGLE	19 -	49 -	59:	C.W.	175-08-08.4	C.C.W.	184-51-51.6	231.000
ANGLE	49 -	59 -	99:	C.W.	180-00-00.0	C.C.W.	180-00-00.0	2454.049
ANGLE	59 -	99 -	95:	C.W.	272-45-15.6	C.C.W.	87-14-44.4	2596.904
ANGLE	99 -	95 -	91:	C.W.	180-47-43.8	C.C.W.	179-12-16.2	2628.386
ANGLE	95 -	91 -	51:	C.W.	269-30-24.4	C.C.W.	90-29-35.6	2647.742
ANGLE	91 -	51 -	42:	C.W.	182-02-06.9	C.C.W.	177-57-53.1	348.964
ANGLE	51 -	42 -	41:	C.W.	179-58-43.5	C.C.W.	180-01-16.5	507.597
ANGLE	42 -	41 -	22:	C.W.	174-32-39.3	C.C.W.	185-27-20.7	729.116
ANGLE	41 -	22 -	21:	C.W.	179-59-43.1	C.C.W.	180-00-16.9	570.950
ANGLE	22 -	21 -	11:	C.W.	180-00-00.0	C.C.W.	180-00-00.0	380.634

Coordinates stored

Wednesday May 31, 1995

1:11 PM