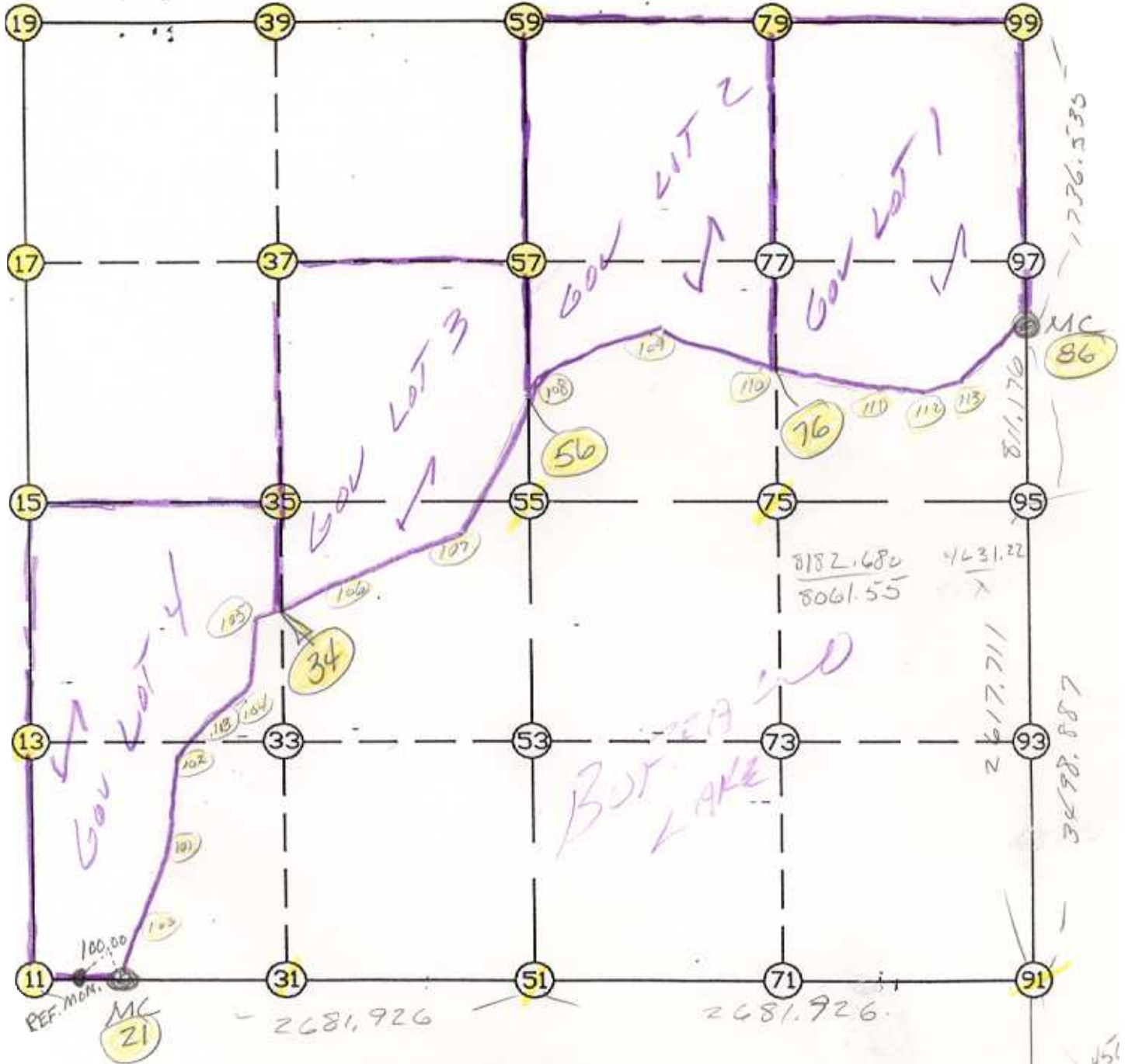


WRIGHT COUNTY SURVEYORS OFFICE

Public Works Building  
Buffalo, Minn. 55313

SECTION 25 TOWNSHIP 120 RANGE 26



REMARKS

SE COR SET ON TOWN LINE IN  
PROPORTION BETWEEN M.C.S. - 5/14 SET  
KADWAY BETWEEN SECTION CORNER -  
E 1/4 SET MIDWAY BETWEEN SECTION CORNERS.

THE INFORMATION SHOWN HEREON IS A COMPILATION OF WRIGHT COUNTY RECORDS AND IS INTENDED TO BE USED FOR COMPARISON PURPOSES ONLY. THE COUNTY IS NOT RESPONSIBLE FOR ANY INACCURACIES HEREIN CONTAINED.

451  
648.78  
MC  
36  
582  
36

COGO =====

Wednesday May 31, 1995

12:06 PM

Coordinate File Name: SEC-25.CRD    Lowest pt #:    1    Highest pt #:    113

Job #            : 95-27

Description: COUNTY COORDINATES SECTION 25 T120 R26

# of chars. in point descr.: 10

FROM TYPE	BEARING	DISTANCE	TO	NORTHING	EASTING
-----					
LIST POINTS					
POINT	NORTHING	EASTING	ELEVATION	DESCR	
-----					
11	168539.858421	492970.383622			
13	169859.705194	493023.980071			
15	171179.551966	493077.576519			
17	172489.429173	493097.847150			
19	173799.306380	493118.117780			
21	168537.819238	493245.269059			
31	168529.911029	494311.309778			
34	170542.395163	494370.954908			
35	171164.166784	494389.382704			
37	172479.219824	494411.810446			
39	173794.272864	494434.238188			
51	168519.963638	495652.235934			
55	171148.781602	495701.188889			
56	171803.261362	495713.376389			
57	172469.010475	495725.773743			
59	173789.239348	495750.358596			
75	171133.263733	497024.308569			
76	171930.284056	497033.792881			
79	173762.330745	497055.593707			
<del>86</del>	<del>171998.910290</del>	<del>498351.918770</del>			
91	168500.068855	498334.088247			
92	163288.693525	498307.530441			
95	171117.745864	498347.428248			
99	173735.422141	498360.828818			
100	168774.025601	493348.687988			
101	169021.634265	493411.036076			
102	169399.120824	493492.633986			
103	169625.275601	493779.208073			
104	169921.040569	493984.123288			
105	170389.496398	494111.895691			
106	170778.009222	494770.160180			
<del>107</del>	<del>171226.550146</del>	<del>495386.581060</del>			
108	172025.039034	495839.047445			
109	172218.972669	496302.272296			
110	171984.920727	496939.307716			
111	171861.274117	497153.134256			
112	171824.307793	497361.214631			
113	171829.386244	497703.322711			

START					11	168539.858	492970.384
11	INV N	2-19-31.4 E	2641.869	15	171179.552	493077.577	
15	INV N	0-53-11.7 E	2620.068	19	173799.306	493118.118	
19	INV S	89-46-51.1 E	2632.260	59	173789.239	495750.359	
59	INV S	88-49-08.3 E	2611.025	99	173735.422	498360.829	
99	INV S	0-17-38.3 W	1736.535	86	171998.910	498351.919	
86	INV S	0-17-31.1 W	881.176	95	171117.746	498347.428	
95	INV S	0-17-31.1 W	2617.711	91	168500.069	498334.088	
91	INV N	89-34-29.9 W	2681.926	51	168519.964	495652.236	
51	INV N	89-34-29.9 W	2407.033	21	168537.819	493245.269	
21	INV N	89-34-29.9 W	274.893	11	168539.858	492970.384	

START					51	168519.964	495652.236
51	INV N	1-04-00.5 E	2629.274	55	171148.782	495701.189	
55	INV N	1-04-00.5 E	2640.916	59	173789.239	495750.359	

START					15	171179.552	493077.577
15	INV S	89-19-41.0 E	2623.793	55	171148.782	495701.189	
55	INV S	89-19-41.0 E	2646.421	95	171117.746	498347.428	

POINT-POINT ANGLES

ANGLE	21 -	11 -	15:	C.W.	271-54-01.3	C.C.W.	88-05-58.7	2641.869
ANGLE	11 -	15 -	19:	C.W.	178-33-40.3	C.C.W.	181-26-19.7	2620.068
ANGLE	15 -	19 -	59:	C.W.	269-19-57.1	C.C.W.	90-40-02.9	2632.260
ANGLE	19 -	59 -	99:	C.W.	180-57-42.9	C.C.W.	179-02-17.1	2611.025
ANGLE	59 -	99 -	86:	C.W.	269-06-46.6	C.C.W.	90-53-13.4	1736.535
ANGLE	99 -	86 -	95:	C.W.	179-59-52.8	C.C.W.	180-00-07.2	881.176
ANGLE	86 -	95 -	91:	C.W.	180-00-00.0	C.C.W.	180-00-00.0	2617.711
ANGLE	95 -	91 -	51:	C.W.	270-07-59.0	C.C.W.	89-52-01.0	2681.926
ANGLE	91 -	51 -	21:	C.W.	180-00-00.0	C.C.W.	180-00-00.0	2407.033
ANGLE	51 -	21 -	11:	C.W.	180-00-00.0	C.C.W.	180-00-00.0	274.893

Coordinates stored                      Wednesday May 31, 1995                      12:07 PM