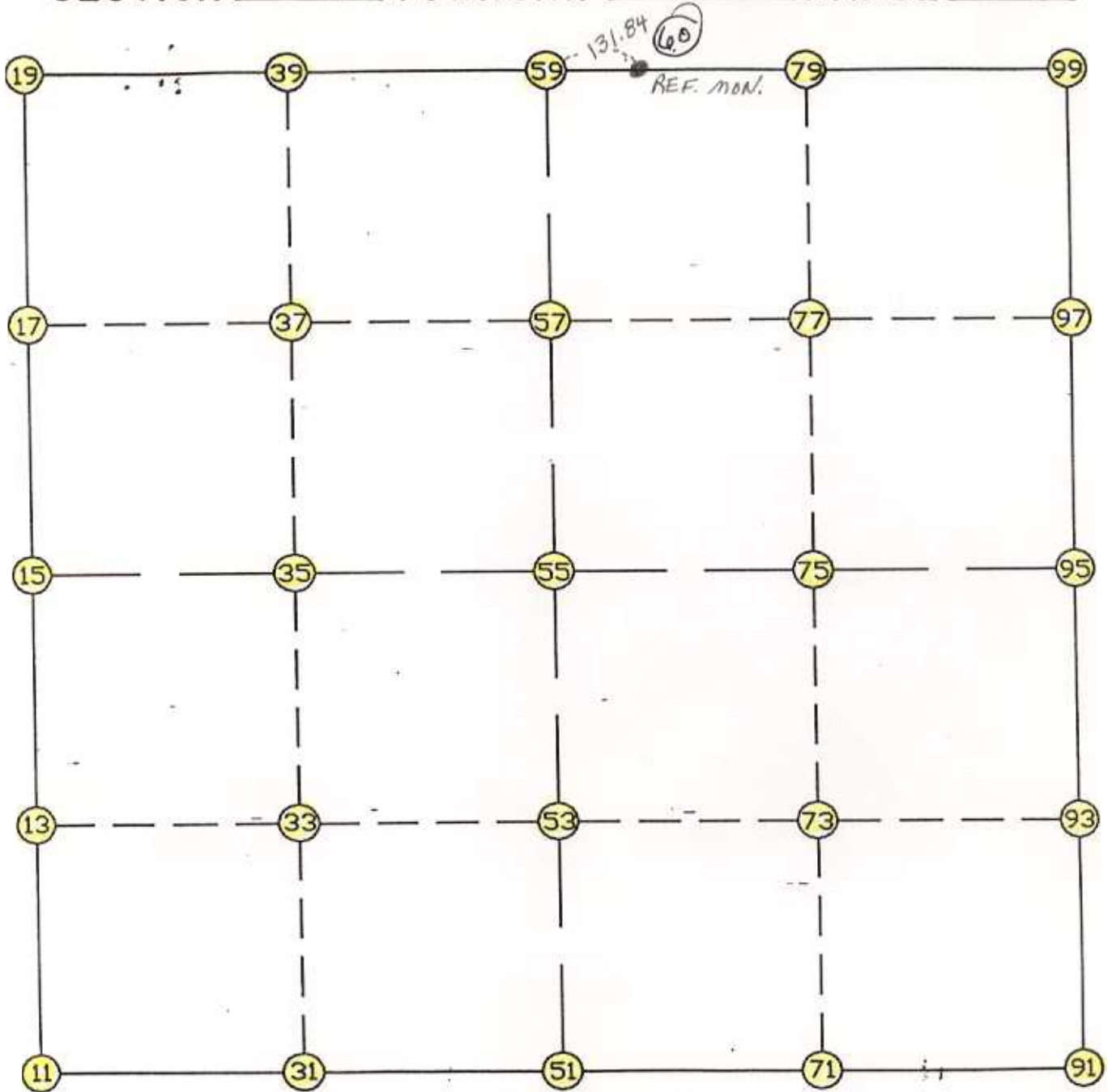


WRIGHT COUNTY SURVEYORS OFFICE

Public Works Building
Buffalo, Minn. 55313

SECTION 20 TOWNSHIP 120 RANGE 26



REMARKS

THE INFORMATION SHOWN HEREON IS A COMPILATION OF WRIGHT COUNTY RECORDS AND IS INTENDED TO BE USED FOR COMPARISON PURPOSES ONLY. THE COUNTY IS NOT RESPONSIBLE FOR ANY INACCURACIES HEREIN CONTAINED.

Coordinate File Name: SEC-20.CRD Lowest pt #: 1 Highest pt #: 99
 Job # : 95-27
 Description: COUNTY COORDINATES SECTION 20 T120 R26
 # of chars. in point descr.: 10

 FROM TYPE BEARING DISTANCE TO NORTHING EASTING

LIST POINTS

POINT NORTHING EASTING ELEVATION DESCR

POINT	NORTHING	EASTING	ELEVATION	DESCR
11	174211.719765	472155.535735		
13	175541.678081	472168.401021		
15	176871.636397	472181.266306		
17	178210.087190	472180.673364		
19	179548.537983	472180.080421		
31	174136.741003	473491.408879		
33	175455.832269	473509.397282		
35	176774.923535	473527.385685		
37	178084.163345	473538.395920		
39	179393.403155	473549.406154		
51	174061.762242	474827.282022		
53	175369.986457	474850.393543		
55	176678.210673	474873.505064		
57	177958.239500	474896.118475		
59	179238.268326	474918.731887		
71	174014.325522	476166.839477		
73	175298.815557	476180.650965		
75	176583.305591	476194.462453		
77	177893.621796	476215.965362		
79	179203.938001	476237.468271		
91	173966.888803	477506.396931		
93	175227.644656	477510.908387		
95	176488.400510	477515.419843		
97	177829.004093	477535.812249		
99	179169.607677	477556.204654		

START				11	174211.720	472155.536
11	INV N	0-33-15.2 E	2660.041	15	176871.636	472181.266
15	INV N	0-01-31.4 W	2676.902	19	179548.538	472180.080
19	INV S	83-32-10.9 E	2756.171	59	179238.268	474918.732
59	INV S	88-30-31.6 E	2638.366	99	179169.608	477556.205
99	INV S	0-52-17.3 W	2681.517	95	176488.401	477515.420
95	INV S	0-12-18.1 W	2521.528	91	173966.889	477506.397
91	INV N	87-58-18.8 W	2680.794	51	174061.762	474827.282
51	INV N	86-47-15.1 W	2675.951	11	174211.720	472155.536
START				51	174061.762	474827.282
51	INV N	1-00-43.6 E	2616.857	55	176678.211	474873.505
55	INV N	1-00-43.6 E	2560.457	59	179238.268	474918.732
START				15	176871.636	472181.266
15	INV S	85-53-26.2 E	2699.178	55	176678.211	474873.505
55	INV S	85-53-26.2 E	2648.725	95	176488.401	477515.420

POINT-POINT ANGLES

ANGLE	51 -	11 -	15:	C.W.	267-20-30.3	C.C.W.	92-39-29.7	2660.041
ANGLE	11 -	15 -	19:	C.W.	179-25-13.4	C.C.W.	180-34-46.6	2676.902
ANGLE	15 -	19 -	59:	C.W.	276-29-20.5	C.C.W.	83-30-39.5	2756.171
ANGLE	19 -	59 -	99:	C.W.	175-01-39.3	C.C.W.	184-58-20.7	2638.366
ANGLE	59 -	99 -	95:	C.W.	269-22-48.9	C.C.W.	90-37-11.1	2681.517
ANGLE	99 -	95 -	91:	C.W.	179-20-00.8	C.C.W.	180-39-59.2	2521.528
ANGLE	95 -	91 -	51:	C.W.	271-49-23.2	C.C.W.	88-10-36.8	2680.794
ANGLE	91 -	51 -	11:	C.W.	181-11-03.7	C.C.W.	178-48-56.3	2675.951