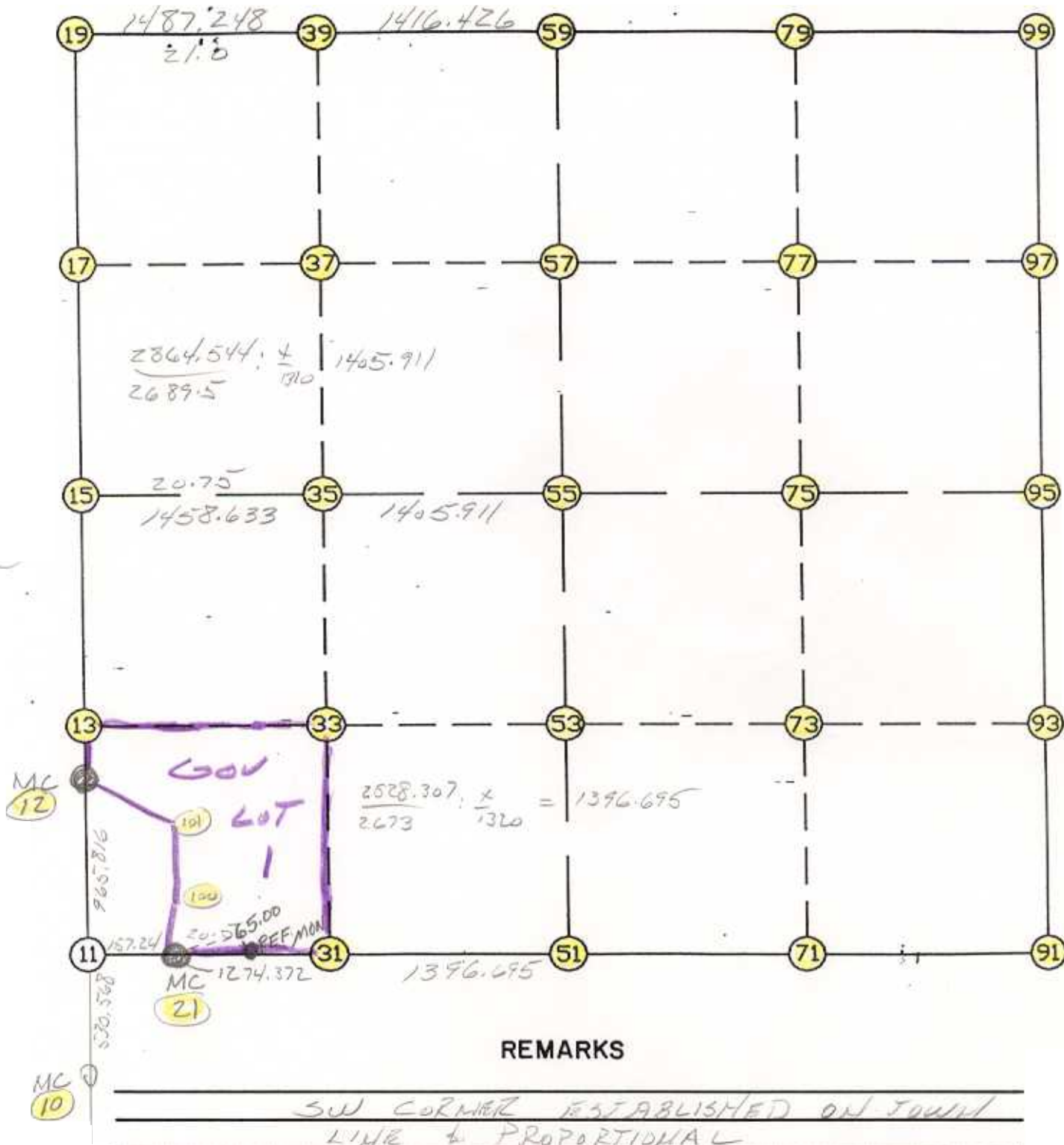


WRIGHT COUNTY SURVEYORS OFFICE

Public Works Building  
Buffalo, Minn. 55313

SECTION 19 TOWNSHIP 120 RANGE 26



THE INFORMATION SHOWN HEREON IS A COMPILATION OF WRIGHT COUNTY RECORDS AND IS INTENDED TO BE USED FOR COMPARISON PURPOSES ONLY. THE COUNTY IS NOT RESPONSIBLE FOR ANY INACCURACIES HEREIN CONTAINED.

Coordinate File Name: SEC-19.CRD    Lowest pt #:    1    Highest pt #:    101  
 Job #            : 95-27  
 Description: COUNTY COORDINATES SECTION 19 T120 R26  
 # of chars. in point descr.: 10

FROM TYPE	BEARING	DISTANCE	TO	NORTHING	EASTING
-----					
LIST POINTS					
POINT	NORTHING	EASTING	ELEVATION	DESCR	
-----					
10	173934.132064	466678.122922			
11	174464.689647	466674.798103			
12	175430.486683	466668.745789			
13	175727.169538	466666.886581			
15	176989.649429	466658.975060			
17	178310.006124	466651.747145			
19	179630.362820	466644.519230			
21	174458.106848	466831.900456			
31	174403.520074	468105.102743			
33	175680.918695	468111.188523			
35	176958.485116	468117.275102			
37	178259.950346	468123.719410			
39	179561.307298	468130.163181			
51	174343.693682	469500.515845			
53	175636.070456	469511.690560			
55	176928.447230	469522.865275			
57	178211.993687	469533.963637			
59	179495.540143	469545.061999			
71	174277.706723	470828.025790			
73	175588.874268	470840.045790			
75	176900.041813	470852.065790			
77	178211.040438	470857.318500			
79	179522.039063	470862.571210			
91	174211.719765	472155.535735			
93	175541.678081	472168.401021			
95	176871.636397	472181.266306			
97	178210.087190	472180.673364			
99	179548.537983	472180.080421			
100	174835.956925	466951.820202			
101	175145.264585	466949.692944			

START					11	174464.690	466674.798
11	INV N	0-21-32.6 W	965.816	12	175430.487	466668.746	
12	INV N	0-21-32.6 W	1559.193	15	176989.649	466658.975	
15	INV N	0-18-49.1 W	2640.753	19	179630.363	466644.519	
19	INV S	87-20-19.3 E	2903.674	59	179495.540	469545.062	
59	INV N	88-50-52.0 E	2635.551	99	179548.538	472180.080	
99	INV S	0-01-31.4 E	2676.902	95	176871.636	472181.266	
95	INV S	0-33-15.2 W	2660.041	91	174211.720	472155.536	
91	INV N	87-09-15.6 W	2658.298	51	174343.694	469500.516	
51	INV N	87-32-42.1 W	2671.067	21	174458.107	466831.900	
21	INV N	87-36-02.3 W	157.240	11	174464.690	466674.798	

START				51	174343.694	469500.516	
51	INV N	0-29-43.5 E	2584.850	55	176928.447	469522.865	
55	INV N	0-29-43.5 E	2567.189	59	179495.540	469545.062	

START				15	176989.649	466658.975	
15	INV S	88-46-32.7 E	2864.544	55	176928.447	469522.865	
55	INV S	88-46-32.7 E	2659.008	95	176871.636	472181.266	

POINT-POINT ANGLES

ANGLE	21 -	11 -	12:	C.W.	267-14-29.7	C.C.W.	92-45-30.3	965.816
ANGLE	11 -	12 -	15:	C.W.	180-00-00.0	C.C.W.	180-00-00.0	1559.193
ANGLE	12 -	15 -	19:	C.W.	180-02-43.4	C.C.W.	179-57-16.6	2640.753
ANGLE	15 -	19 -	59:	C.W.	272-58-29.8	C.C.W.	87-01-30.2	2903.674
ANGLE	19 -	59 -	99:	C.W.	176-11-11.3	C.C.W.	183-48-48.7	2635.551
ANGLE	59 -	99 -	95:	C.W.	271-07-36.6	C.C.W.	88-52-23.4	2676.902
ANGLE	99 -	95 -	91:	C.W.	180-34-46.6	C.C.W.	179-25-13.4	2660.041
ANGLE	95 -	91 -	51:	C.W.	272-17-29.2	C.C.W.	87-42-30.8	2658.298
ANGLE	91 -	51 -	21:	C.W.	179-36-33.5	C.C.W.	180-23-26.5	2671.067
ANGLE	51 -	21 -	11:	C.W.	179-56-39.8	C.C.W.	180-03-20.2	157.240

Coordinates stored

Wednesday May 31, 1995

7:48 AM