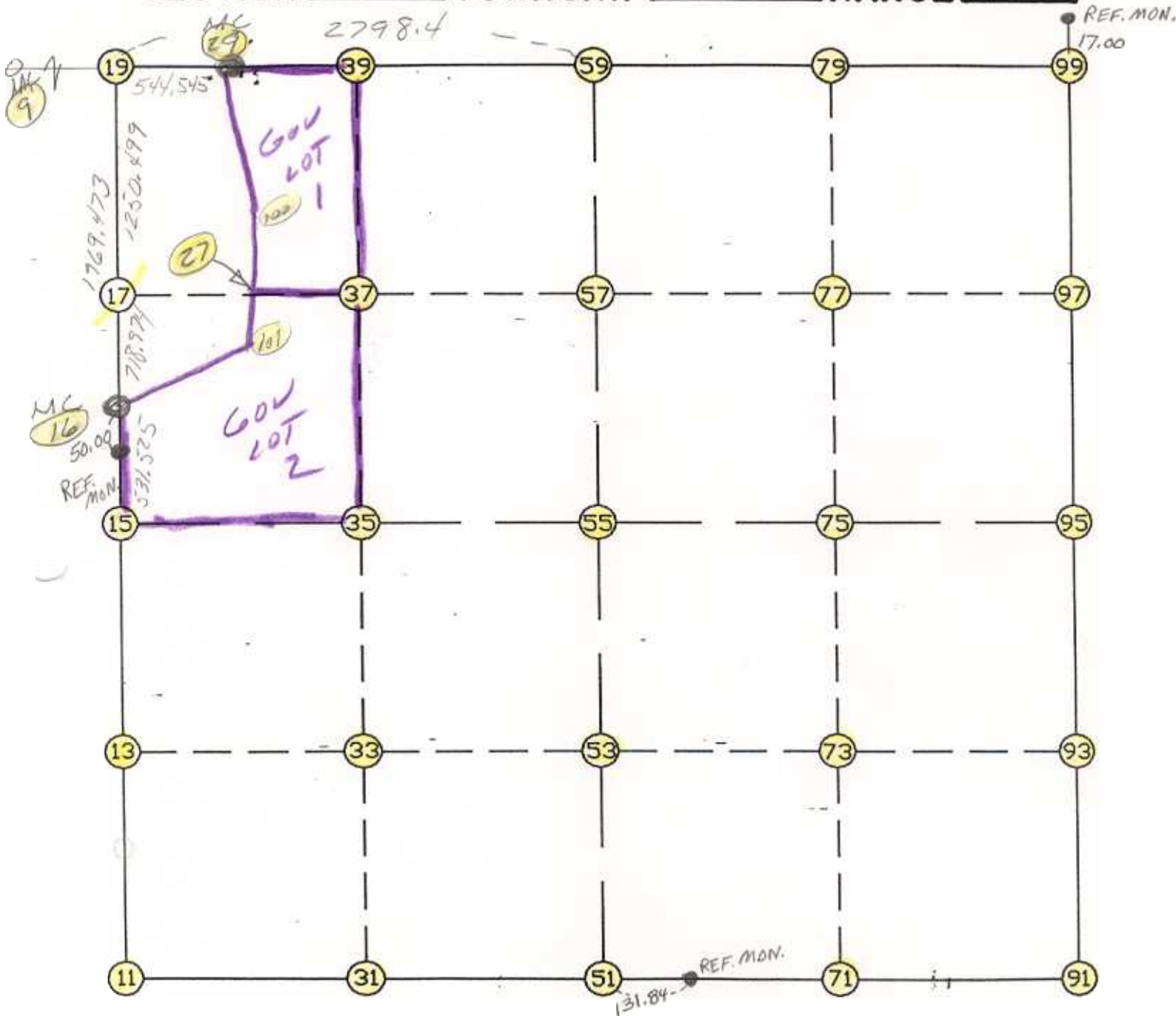


WRIGHT COUNTY SURVEYORS OFFICE

Public Works Building  
Buffalo, Minn. 55313

SECTION 17 TOWNSHIP 120 RANGE 26



REMARKS

NW COR SET ON LINE N1/4 SEC 17 TO  
MC IN SEC 19 AT MEASURED DISTANCE  
2798.4 WBST OF N1/4

THE INFORMATION SHOWN HEREON IS A COMPILATION OF WRIGHT COUNTY RECORDS AND IS INTENDED TO BE USED FOR COMPARISON PURPOSES ONLY. THE COUNTY IS NOT RESPONSIBLE FOR ANY INACCURACIES HEREIN CONTAINED.

===== COGO =====

Tuesday May 30, 1995

2:20 PM

Coordinate File Name: SEC-17.CRD    Lowest pt #:    1    Highest pt #:    101

Job #            : 95-27

Description: COUNTY COORDINATES SECTION 17 T120 R26

# of chars. in point descr.: 10

FROM TYPE	BEARING	DISTANCE	TO	NORTHING	EASTING
-----					
LIST POINTS					
POINT	NORTHING	EASTING	ELEVATION	DESCR	
-----					
9	184833.693519	469764.828166			
11	179548.537983	472180.080421			
13	180878.388894	472161.002490			
15	182208.239805	472141.924558			
16	182739.731035	472135.903341			
17	183458.659018	472127.768945			
19	184709.078067	472113.620931			
27	183412.107756	472799.391034			
29	184680.227749	472657.401140			
31	179393.403155	473549.406154			
33	180741.442616	473538.501462			
35	182089.482078	473527.596769			
37	183362.214759	473519.226292			
39	184634.947620	473510.855813			
51	179238.268326	474918.731887			
53	180604.496339	474916.000434			
55	181970.724352	474913.268981			
57	183265.770763	474910.679838			
59	184560.817174	474908.090696			
71	179203.938001	476237.468271			
73	180532.026233	476220.669995			
75	181860.114465	476203.871720			
77	183178.923558	476209.506681			
79	184497.732651	476215.141643			
91	179169.607677	477556.204654			
93	180459.556127	477525.339557			
95	181749.504577	477494.474460			
97	183092.076353	477508.333525			
99	184434.648128	477522.192589			
100	183804.734483	472816.841936			
101	183078.437453	472784.560541			

START					11	179548.538	472180.080
11	INV N	0-49-18.9 W	2659.975	15	182208.240	472141.925	
15	INV N	0-38-56.7 W	531.525	16	182739.731	472135.903	
16	INV N	0-38-53.7 W	1969.473	19	184709.078	472113.621	
19	INV S	86-57-46.8 E	544.545	29	184680.228	472657.401	
29	INV S	86-57-46.8 E	2253.855	59	184560.817	474908.091	
59	INV S	87-14-12.4 E	2617.145	99	184434.648	477522.193	
99	INV S	0-35-29.1 W	2685.287	95	181749.505	477494.474	
95	INV S	1-22-14.4 E	2580.635	91	179169.608	477556.205	
91	INV N	88-30-31.6 W	2638.366	51	179238.268	474918.732	
51	INV N	83-32-10.9 W	2756.171	11	179548.538	472180.080	
START				51	179238.268	474918.732	
51	INV N	0-06-52.4 W	2732.461	55	181970.724	474913.269	
55	INV N	0-06-52.4 W	2590.098	59	184560.817	474908.091	
START				15	182208.240	472141.925	
15	INV S	85-06-05.4 E	2781.504	55	181970.724	474913.269	
55	INV S	85-06-05.4 E	2590.668	95	181749.505	477494.474	

POINT-POINT ANGLES

ANGLE	51 -	11 -	15:	C.W.	262-42-52.0	C.C.W.	97-17-08.0	2659.975
ANGLE	11 -	15 -	16:	C.W.	180-10-22.2	C.C.W.	179-49-37.8	531.525
ANGLE	15 -	16 -	19:	C.W.	180-00-02.9	C.C.W.	179-59-57.1	1969.473
ANGLE	16 -	19 -	29:	C.W.	273-41-06.9	C.C.W.	86-18-53.1	544.545
ANGLE	19 -	29 -	59:	C.W.	180-00-00.0	C.C.W.	180-00-00.0	2253.855
ANGLE	29 -	59 -	99:	C.W.	179-43-34.5	C.C.W.	180-16-25.5	2617.145
ANGLE	59 -	99 -	95:	C.W.	267-49-41.5	C.C.W.	92-10-18.5	2685.287
ANGLE	99 -	95 -	91:	C.W.	178-02-16.4	C.C.W.	181-57-43.6	2580.635
ANGLE	95 -	91 -	51:	C.W.	272-51-42.9	C.C.W.	87-08-17.1	2638.366
ANGLE	91 -	51 -	11:	C.W.	184-58-20.7	C.C.W.	175-01-39.3	2756.171

Coordinates stored

Tuesday May 30, 1995

2:21 PM