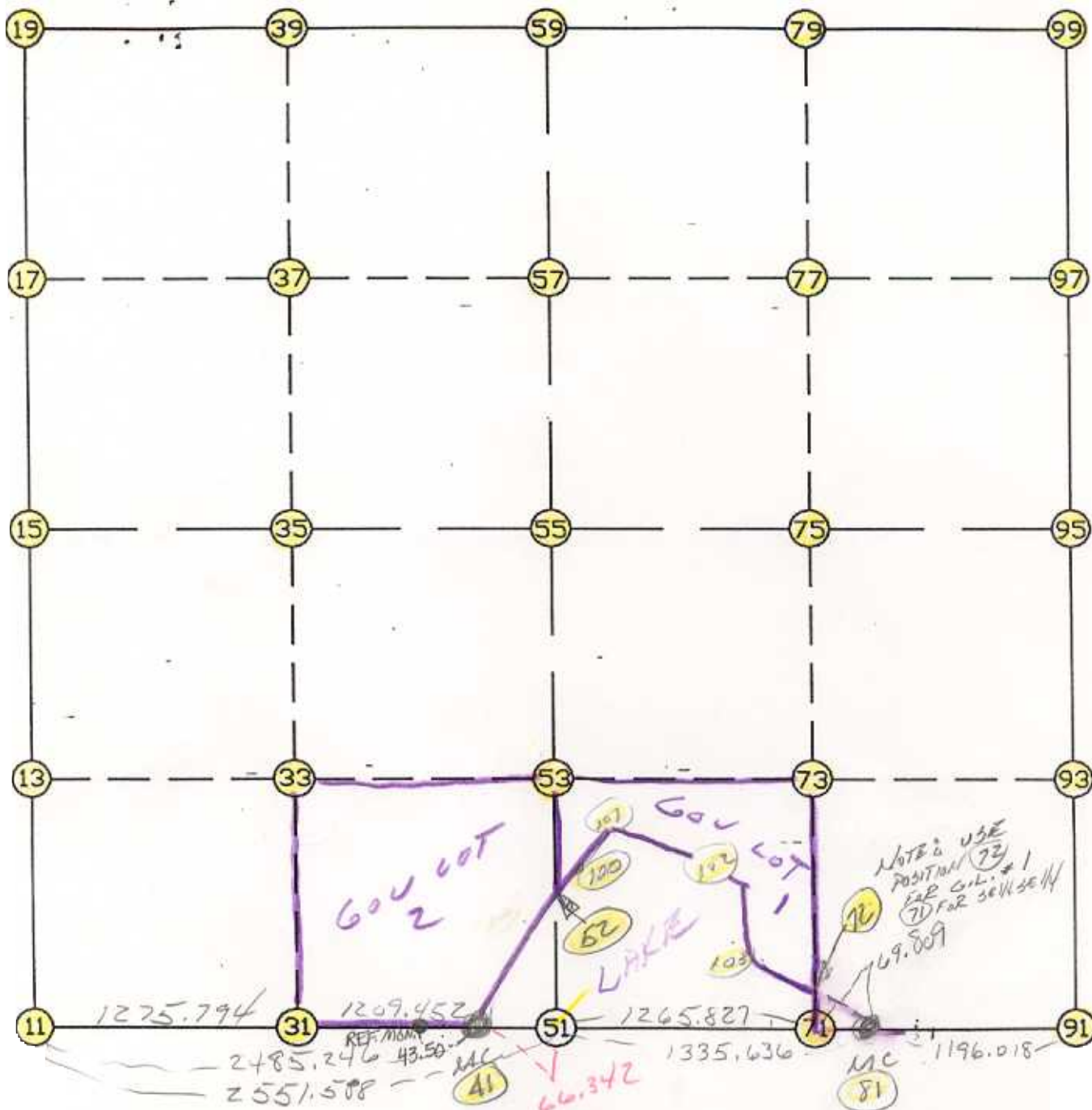


WRIGHT COUNTY SURVEYORS OFFICE

Public Works Building
Buffalo, Minn. 55313

SECTION 15 TOWNSHIP 120 RANGE 26



REMARKS

NOTE: POSITION FOR S.W. 1/4 SET
ACCORDING TO REPORT #70 BASED ON
COUNTY RECORDS

THE INFORMATION SHOWN HEREON IS A COMPILATION OF WRIGHT COUNTY RECORDS AND IS INTENDED TO BE USED FOR COMPARISON PURPOSES ONLY. THE COUNTY IS NOT RESPONSIBLE FOR ANY INACCURACIES HEREIN CONTAINED.

Coordinate File Name: SEC-15.CRD Lowest pt #: 1 Highest pt #: 103
 Job # : 95-27
 Description: COUNTY COORDINATES SECTION 15 T120 R26
 # of chars. in point descr.: 10

FROM TYPE	BEARING	DISTANCE	TO	NORTHING	EASTING
LIST POINTS					
POINT	NORTHING	EASTING	ELEVATION	DESCR	
11	179029.815760	482933.833810		/	
13	180318.361457	482920.285023			
15	181606.907154	482906.736236			
17	182973.002828	482886.531428			
19	184339.098503	482866.326621			
31	179022.026862	484209.604034			
33	180313.284064	484209.761645			
35	181602.730890	484209.919035			
37	182938.620795	484206.850252			
39	184274.510700	484203.781469			
41	179014.642990	485419.033809			
51	179017.859018	485485.297812			
52	179153.805686	485486.762481			
53	180308.206822	485499.199823			
55	181598.554627	485513.101833			
57	182904.238761	485527.169075			
59	184209.922896	485541.236317			
71	179079.221891	486749.636608			
72	179121.776851	486750.332838			
73	180336.823743	486770.211887			
75	181594.460072	486790.787729			
77	182885.912967	486811.933506			
79	184177.365861	486833.079283			
81	179082.605967	486819.363114			
91	179140.515894	488013.978101			
93	180365.440706	488041.225863			
95	181590.365517	488068.473624			
97	182867.587172	488096.697937			
99	184144.808826	488124.922250			
100	179529.484901	485669.600662			
101	179911.200347	486023.384959			
102	179722.156978	486306.764086			
103	179324.747802	486392.640099			

START					11	179029.816	482933.834
11	INV N	0-36-08.8 W	2577.234		15	181606.907	482906.736
15	INV N	0-50-50.5 W	2732.490		19	184339.099	482866.327
19	INV S	87-14-06.9 E	2678.027		59	184209.923	485541.236
59	INV S	88-33-22.8 E	2584.506		99	184144.809	488124.922
99	INV S	1-15-57.3 W	2555.067		95	181590.366	488068.474
95	INV S	1-16-27.5 W	2450.456		91	179140.516	488013.978
91	INV S	87-13-29.0 W	1196.018		81	179082.606	486819.363
81	INV S	87-13-17.1 W	1335.636		51	179017.859	485485.298
51	INV S	87-13-17.1 W	66.342		41	179014.643	485419.034
41	INV N	89-39-00.7 W	2485.246		11	179029.816	482933.834
START					51	179017.859	485485.298
51	INV N	0-37-02.2 E	2580.845		55	181598.555	485513.102
55	INV N	0-37-02.2 E	2611.520		59	184209.923	485541.236
START					15	181606.907	482906.736
15	INV S	89-48-59.0 E	2606.379		55	181598.555	485513.102
55	INV S	89-48-59.0 E	2555.385		95	181590.366	488068.474

POINT-POINT ANGLES

ANGLE	41 -	11 -	15:	C.W.	269-02-52.0	C.C.W.	90-57-08.0	2577.234
ANGLE	11 -	15 -	19:	C.W.	179-45-18.3	C.C.W.	180-14-41.7	2732.490
ANGLE	15 -	19 -	59:	C.W.	273-36-43.6	C.C.W.	86-23-16.4	2678.027
ANGLE	19 -	59 -	99:	C.W.	178-40-44.1	C.C.W.	181-19-15.9	2584.506
ANGLE	59 -	99 -	95:	C.W.	269-49-20.2	C.C.W.	90-10-39.8	2555.067
ANGLE	99 -	95 -	91:	C.W.	180-00-30.1	C.C.W.	179-59-29.9	2450.456
ANGLE	95 -	91 -	81:	C.W.	265-57-01.5	C.C.W.	94-02-58.5	1196.018
ANGLE	91 -	81 -	51:	C.W.	179-59-48.1	C.C.W.	180-00-11.9	1335.636
ANGLE	81 -	51 -	41:	C.W.	180-00-00.0	C.C.W.	180-00-00.0	66.342
ANGLE	51 -	41 -	11:	C.W.	183-07-42.2	C.C.W.	176-52-17.8	2485.246

Coordinates stored

Tuesday May 30, 1995

11:54 AM