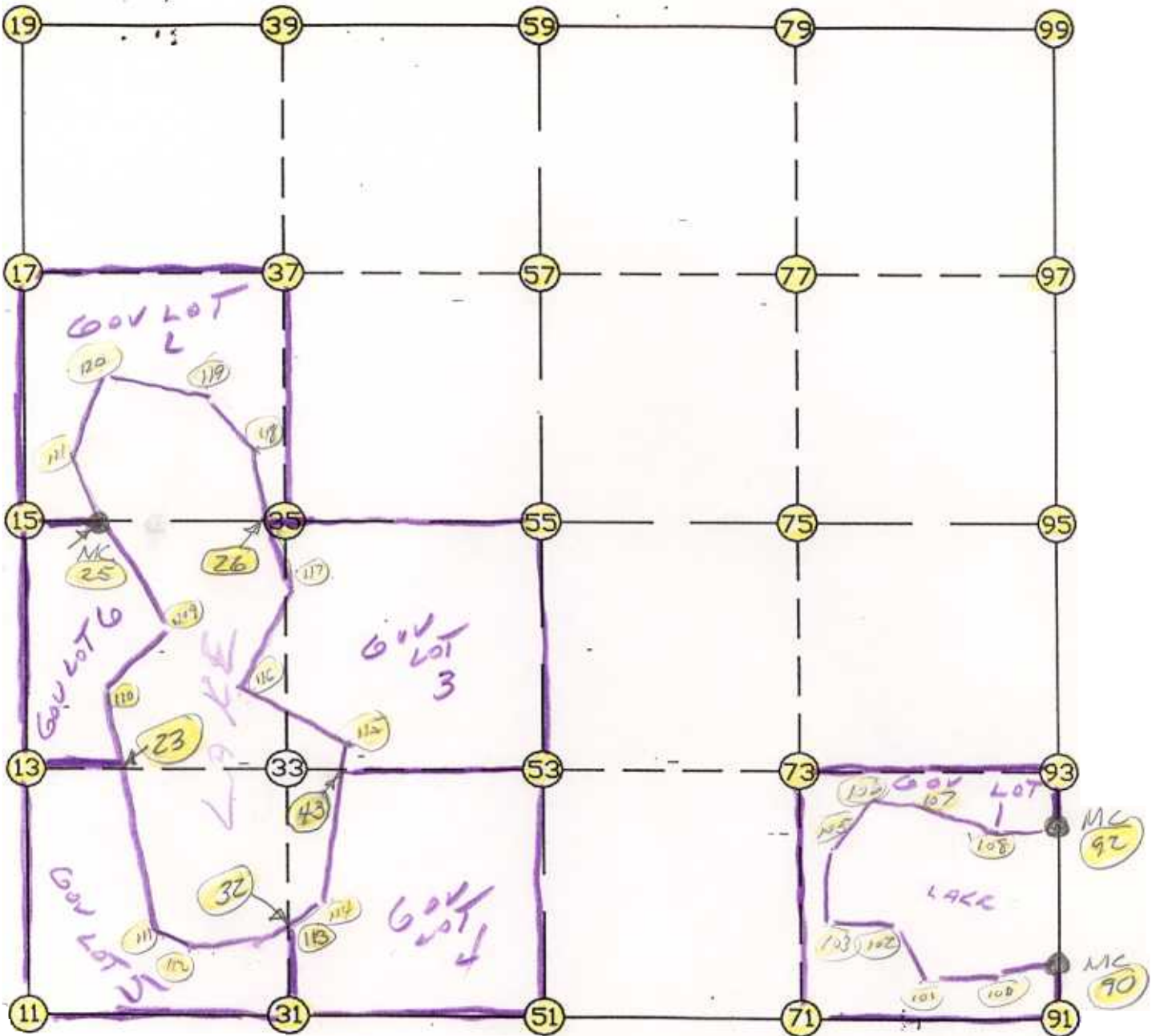


WRIGHT COUNTY SURVEYORS OFFICE

Public Works Building

Buffalo, Minn. 55313

SECTION 14 TOWNSHIP 120 RANGE 26



REMARKS

THE INFORMATION SHOWN HEREON IS A COMPILATION OF WRIGHT COUNTY RECORDS AND IS INTENDED TO BE USED FOR COMPARISON PURPOSES ONLY. THE COUNTY IS NOT RESPONSIBLE FOR ANY INACCURACIES HEREIN CONTAINED.

Coordinate File Name: SEC-14.CRD Lowest pt #: 1 Highest pt #: 121
 Job # : 95-27
 Description: COUNTY COORDINATES SECTION 14 T120 R26
 # of chars. in point descr.: 10

 FROM TYPE BEARING DISTANCE TO NORTHING EASTING

LIST POINTS

POINT	NORTHING	EASTING	ELEVATION	DESCR
11	179140.515894	488013.978101		
13	180365.440706	488041.225863		
15	181590.365517	488068.473624		
17	182867.587172	488096.697937		
19	184144.808826	488124.922250		
23	180358.359342	488448.044376		
25	181586.452803	488398.450427		
26	181576.392405	489246.889036		
31	179110.420039	489328.027726		
32	179452.242063	489333.855185		
35	181574.932098	489370.043283		
37	182855.499915	489391.803380		
39	184136.067731	489413.563477		
43	180336.304436	489715.080529		
51	179080.324184	490642.077351		
53	180319.911431	490656.845146		
55	181559.498678	490671.612942		
57	182843.412657	490686.908823		
59	184127.326636	490702.204704		
71	179058.648577	491965.024134		
73	180301.323439	491971.926843		
75	181543.998300	491978.829553		
77	182831.274624	491985.967655		
79	184118.550948	491993.105757		
90	179472.989841	493287.634085		
91	179036.972971	493287.970917		
92	179846.718729	493287.345372		
93	180282.735446	493287.008541		
95	181528.497921	493286.046164		
97	182819.136591	493285.026487		
98	182819.136591	493285.026487		
99	184109.775260	493284.006810		
100	179316.397694	493167.665461		
101	179314.503807	492854.371578		
102	179559.701621	492601.161908		
103	179547.982681	492419.675153		
104	179748.510404	492380.120601		
105	180045.329828	492326.559009		
106	180264.988289	492469.385985		
107	180186.349840	492682.190857		
108	179847.155532	493137.279017		
109	181116.798350	488836.181695		
110	180593.561291	488380.822246		
111	179420.777943	488716.010769		
112	179339.626331	488965.774247		
113	179455.133446	489343.305580		
114	179968.563440	489702.410773		
115	180529.710616	489721.743939		
116	180794.449685	489263.111868		
117	181267.943981	489407.650335		
118	182000.721608	489025.731433		
119	182380.869915	488706.606130		
120	182443.197102	488114.284097		
121	181750.764209	488113.889529		



START					11	179140.516	488013.978
11	INV N	1-16-27.5 E	2450.456		15	181590.366	488068.474
15	INV N	1-15-57.3 E	2555.067		19	184144.809	488124.922
19	INV S	89-36-40.9 E	2577.342		59	184127.327	490702.205
59	INV S	89-36-37.8 E	2581.862		99	184109.775	493284.007
99	INV S	0-02-43.0 E	2581.278		95	181528.498	493286.046
95	INV S	0-02-39.3 E	1681.780		92	179846.719	493287.345
92	INV S	0-02-39.3 E	373.729		90	179472.990	493287.634
90	INV S	0-02-39.3 E	436.017		91	179036.973	493287.971
91	INV N	89-03-40.8 W	2646.249		51	179080.324	490642.077
51	INV N	88-41-16.7 W	2628.788		11	179140.516	488013.978
START					51	179080.324	490642.077
51	INV N	0-40-57.2 E	2479.350		55	181559.499	490671.613
55	INV N	0-40-57.2 E	2568.010		59	184127.327	490702.205
START					15	181590.366	488068.474
15	INV S	89-19-14.3 E	2603.322		55	181559.499	490671.613
55	INV S	89-19-14.3 E	2614.617		95	181528.498	493286.046

POINT-POINT ANGLES

ANGLE	51 -	11 -	15:	C.W.	269-57-44.2	C.C.W.	90-02-15.8	2450.456
ANGLE	11 -	15 -	19:	C.W.	179-59-29.9	C.C.W.	180-00-30.1	2555.067
ANGLE	15 -	19 -	59:	C.W.	269-07-21.8	C.C.W.	90-52-38.2	2577.342
ANGLE	19 -	59 -	99:	C.W.	180-00-03.1	C.C.W.	179-59-56.9	2581.862
ANGLE	59 -	99 -	95:	C.W.	269-33-54.8	C.C.W.	90-26-05.2	2581.278
ANGLE	99 -	95 -	92:	C.W.	180-00-03.6	C.C.W.	179-59-56.4	1681.780
ANGLE	95 -	92 -	90:	C.W.	180-00-00.0	C.C.W.	180-00-00.0	373.729
ANGLE	92 -	90 -	90:	C.W.	0-02-39.3	C.C.W.	359-57-20.7	0.000
ANGLE	90 -	90 -	51:	C.W.	81-33-27.1	C.C.W.	278-26-32.9	2674.539
ANGLE	90 -	51 -	11:	C.W.	189-45-16.2	C.C.W.	170-14-43.8	2628.788

Coordinates stored

Tuesday May 30, 1995

10:32 AM