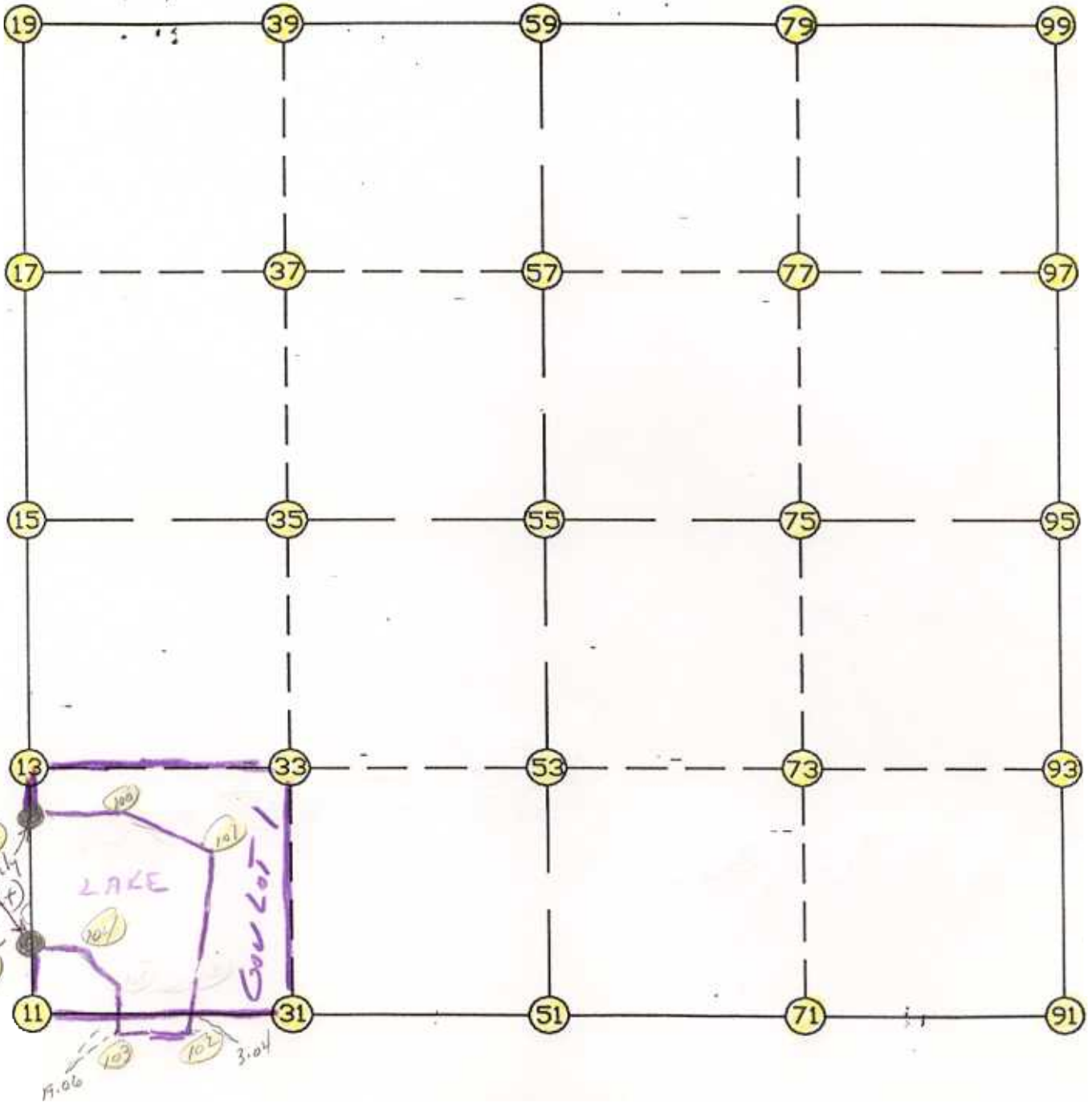


WRIGHT COUNTY SURVEYORS OFFICE

Public Works Building  
Buffalo, Minn. 55313

SECTION 13 TOWNSHIP 120 RANGE 26



REMARKS

---

---

---

THE INFORMATION SHOWN HEREON IS A COMPILATION OF WRIGHT COUNTY RECORDS AND IS INTENDED TO BE USED FOR COMPARISON PURPOSES ONLY. THE COUNTY IS NOT RESPONSIBLE FOR ANY INACCURACIES HEREIN CONTAINED.

===== COGO =====

Tuesday May 30, 1995

9:55 AM

Coordinate File Name: SEC-13.CRD    Lowest pt #:    1    Highest pt #:    104  
Job #            : 95-27  
Description: COUNTY COORDINATES SECTION 13 T120 R26  
# of chars. in point descr.: 10

-----  
FROM TYPE            BEARING    DISTANCE    TO            NORTHING            EASTING  
-----

LIST POINTS  
POINT            NORTHING            EASTING            ELEVATION            DESCR  
-----

10	179472.989841	493287.634085		
11	179036.972971	493287.970917		
12	179846.718729	493287.345372		
13	180282.735446	493287.008541		
15	181528.497921	493286.046164		
17	182819.136591	493285.026487		
19	184109.775260	493284.006810		
21	179033.933366	494034.066452		
22	179035.692768	493602.206916		
31	179031.935112	494524.553970		
33	180297.404697	494527.944668		
35	181562.874281	494531.335367		
37	182861.257483	494534.760535		
39	184159.640684	494538.185703		
51	179026.897254	495761.137022		
53	180312.073948	495768.880796		
55	181597.250642	495776.624570		
57	182903.378375	495784.494583		
59	184209.506108	495792.364597		
71	179034.835832	497050.823440		
73	180333.631297	497050.854337		
75	181632.426762	497050.885234		
77	182949.395900	497054.404056		
79	184266.365038	497057.922878		
91	179042.774410	498340.509859		
93	180355.188646	498332.827878		
95	181667.602883	498325.145897		
97	182995.413426	498324.313529		
99	184323.223968	498323.481160		
100	179847.444950	493696.541571		
101	179636.382828	494280.278509		
102	<del>179030.891272</del>	<del>494034.066452</del>		
103	179016.631211	493602.206916		
104	179472.945104	493389.445951		

START					11	179036.973	493287.971
11	INV N	0-02-39.3 W	436.017		10	179472.990	493287.634
10	INV N	0-02-39.3 W	373.729		12	179846.719	493287.345
12	INV N	0-02-39.3 W	1681.780		15	181528.498	493286.046
15	INV N	0-02-43.0 W	2581.278		19	184109.775	493284.007
19	INV N	87-43-23.3 E	2510.340		59	184209.506	495792.365
59	INV N	87-25-39.2 E	2533.670		99	184323.224	498323.481
99	INV S	0-02-09.3 E	2655.622		95	181667.603	498325.146
95	INV S	0-20-07.3 E	2624.873		91	179042.774	498340.510
91	INV S	89-38-50.4 W	2579.422		51	179026.897	495761.137
51	INV N	89-45-59.7 W	2473.187		11	179036.973	493287.971
START					51	179026.897	495761.137
51	INV N	0-20-42.8 E	2570.400		55	181597.251	495776.625
55	INV N	0-20-42.8 E	2612.303		59	184209.506	495792.365
START					15	181528.498	493286.046
15	INV N	88-25-07.5 E	2491.527		55	181597.251	495776.625
55	INV N	88-25-07.5 E	2549.492		95	181667.603	498325.146

POINT-POINT ANGLES

ANGLE	51 -	11 -	10:	C.W.	269-43-20.3	C.C.W.	90-16-39.7	436.017
ANGLE	11 -	10 -	12:	C.W.	180-00-00.0	C.C.W.	180-00-00.0	373.729
ANGLE	10 -	12 -	15:	C.W.	180-00-00.0	C.C.W.	180-00-00.0	1681.780
ANGLE	12 -	15 -	19:	C.W.	179-59-56.4	C.C.W.	180-00-03.6	2581.278
ANGLE	15 -	19 -	59:	C.W.	267-46-06.3	C.C.W.	92-13-53.7	2510.340
ANGLE	19 -	59 -	99:	C.W.	179-42-15.8	C.C.W.	180-17-44.2	2533.670
ANGLE	59 -	99 -	95:	C.W.	272-32-11.5	C.C.W.	87-27-48.5	2655.622
ANGLE	99 -	95 -	91:	C.W.	179-42-02.0	C.C.W.	180-17-58.0	2624.873
ANGLE	95 -	91 -	51:	C.W.	269-58-57.7	C.C.W.	90-01-02.3	2579.422
ANGLE	91 -	51 -	11:	C.W.	180-35-10.0	C.C.W.	179-24-50.0	2473.187

Coordinates stored

Tuesday May 30, 1995

9:56 AM