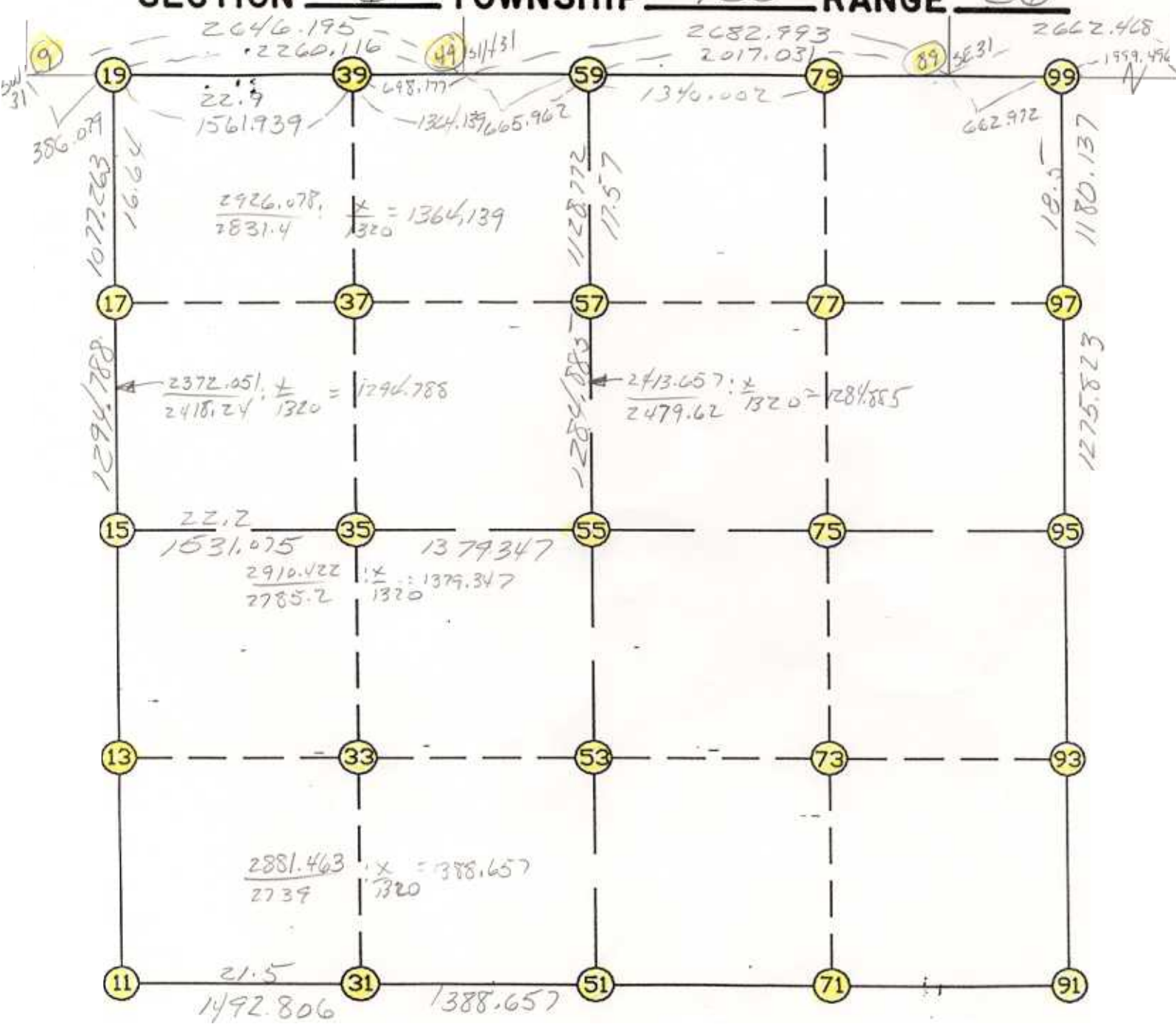


WRIGHT COUNTY SURVEYORS OFFICE

Public Works Building
Buffalo, Minn. 55313

SECTION 6 TOWNSHIP 120 RANGE 26



REMARKS

THE INFORMATION SHOWN HEREON IS A COMPILATION OF WRIGHT COUNTY RECORDS AND IS INTENDED TO BE USED FOR COMPARISON PURPOSES ONLY. THE COUNTY IS NOT RESPONSIBLE FOR ANY INACCURACIES HEREIN CONTAINED.

Coordinate File Name: SEC-06.CRD Lowest pt #: 1 Highest pt #: 100
 Job # : 95-27
 Description: COUNTY COORDINATES SECTION 6 T120 R26
 # of chars. in point descr.: 10

 FROM TYPE BEARING DISTANCE TO NORTHING EASTING

LIST POINTS

POINT	NORTHING	EASTING	ELEVATION	DESCR
9	195156.975141	466140.635722		
11	190149.699640	466574.157130		
13	191465.720598	466559.069627		
15	192781.741556	466543.982124		
17	194076.495195	466534.549270		
19	195153.729176	466526.701143		
31	190111.737455	468066.479876		
33	191429.108591	468070.565725		
35	192746.507725	468074.651661		
37	194035.747432	468082.154312		
39	195140.220433	468088.581725		
49	195134.727218	468786.737262		
51	190076.423776	469454.687789		
53	191395.594650	469454.160715		
55	192714.765525	469453.633642		
57	193999.650498	469453.120267		
59	195128.422408	469452.669268		
71	190041.615008	470790.280281		
73	191362.234575	470815.122884		
75	192682.854142	470839.965486		
77	193962.751824	470815.052951		
79	195115.736313	470792.610715		
89	195109.326723	471469.609874		
91	190006.806241	472125.872774		
93	191328.874500	472176.085052		
95	192650.942759	472226.297329		
97	193925.836315	472177.607008		
99	195105.113555	472132.568435		
100	195092.406816	474132.024059		

START			11	190149.700	466574.157
11	INV N	0-39-24.6 W	2632.215	15	192781.742
15	INV N	0-25-02.7 W	2372.051	19	195153.729
19	INV S	89-31-05.8 E	2260.116	49	195134.727
49	INV S	89-27-27.2 E	665.962	59	195128.422
59	INV S	89-27-27.2 E	2017.031	89	195109.327
89	INV S	89-38-09.2 E	662.972	99	195105.114
99	INV S	2-11-13.8 E	2455.960	95	192650.943
95	INV S	2-10-30.2 W	2646.043	91	190006.806
91	INV N	88-30-25.5 W	2672.092	51	190076.424
51	INV N	88-32-34.1 W	2881.463	11	190149.700
START			51	190076.424	469454.688
51	INV N	0-01-22.4 W	2638.342	55	192714.766
55	INV N	0-01-22.4 W	2413.657	59	195128.422
START			15	192781.742	466543.982
15	INV S	88-40-52.9 E	2910.422	55	192714.766
55	INV S	88-40-52.9 E	2773.398	95	192650.943

POINT-POINT ANGLES

ANGLE	51 -	11 -	15:	C.W.	267-53-09.5	C.C.W.	92-06-50.5	2632.215
ANGLE	11 -	15 -	19:	C.W.	180-14-21.9	C.C.W.	179-45-38.1	2372.051
ANGLE	15 -	19 -	49:	C.W.	270-53-56.9	C.C.W.	89-06-03.1	2260.116
ANGLE	19 -	49 -	59:	C.W.	180-03-38.6	C.C.W.	179-56-21.4	665.962
ANGLE	49 -	59 -	89:	C.W.	180-00-00.0	C.C.W.	180-00-00.0	2017.031
ANGLE	59 -	89 -	99:	C.W.	179-49-18.0	C.C.W.	180-10-42.0	662.972
ANGLE	89 -	99 -	95:	C.W.	267-26-55.4	C.C.W.	92-33-04.6	2455.960
ANGLE	99 -	95 -	91:	C.W.	184-21-44.0	C.C.W.	175-38-16.0	2646.043
ANGLE	95 -	91 -	51:	C.W.	269-19-04.3	C.C.W.	90-40-55.7	2672.092
ANGLE	91 -	51 -	11:	C.W.	179-57-51.4	C.C.W.	180-02-08.6	2881.463