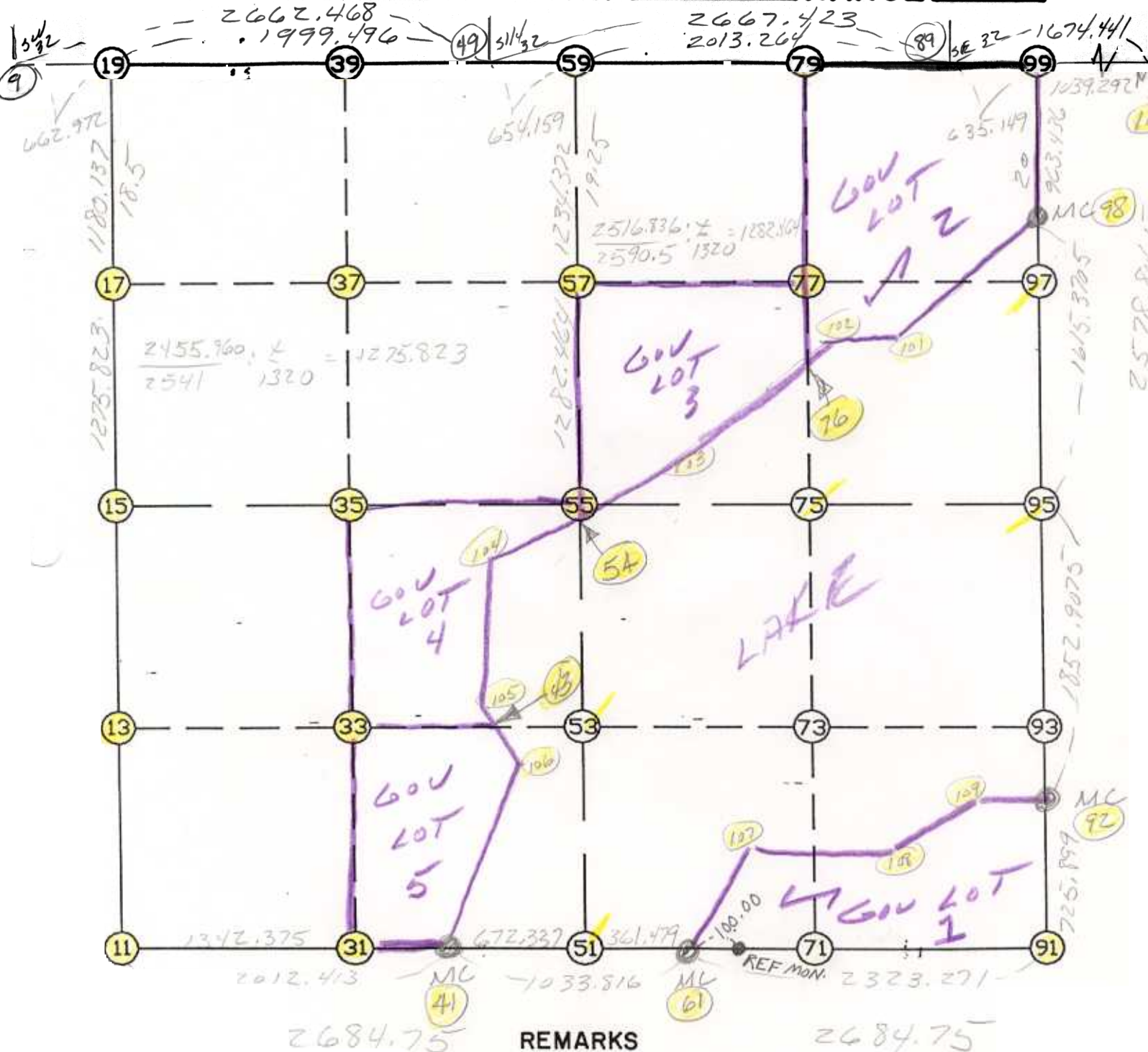


WRIGHT COUNTY SURVEYORS OFFICE

Public Works Building
Buffalo, Minn. 55313

SECTION 5 TOWNSHIP 120 RANGE 26



NOTE: 3 1/4 SET MIDWAY BETWEEN SECTION CORNERS -
ELLY SET ON LINE BETWEEN M.C.'S & AT
GOV PROPORTION BETWEEN SECTION CORNERS

THE INFORMATION SHOWN HEREON IS A COMPILATION OF WRIGHT COUNTY RECORDS AND IS INTENDED TO BE USED FOR COMPARISON PURPOSES ONLY. THE COUNTY IS NOT RESPONSIBLE FOR ANY INACCURACIES HEREIN CONTAINED.

==== COGO =====

Sunday May 28, 1995

8:49 AM

Coordinate File Name: SEC-05.CRD Lowest pt #: 1 Highest pt #: 109

Job # : 95-27

Description: COUNTY COORDINATES SECTION 5 T120 R26

of chars. in point descr.: 10

FROM TYPE	BEARING	DISTANCE	TO	NORTHING	EASTING
-----------	---------	----------	----	----------	---------

LIST POINTS	POINT	NORTHING	EASTING	ELEVATION	DESCR
	9	195109.326723	471469.609874		
	11	190006.806241	472125.872774		
	13	191328.874500	472176.085052		
	15	192650.942759	472226.297329		
	17	193925.836315	472177.607008		
	19	195105.113555	472132.568435		
	31	190024.422236	473468.132182		
	33	191317.806891	473490.203132		
	35	192611.179966	473512.273884		
	37	193889.845680	473485.057052		
	39	195096.681605	473459.369142		
	41	190033.215152	474138.112709		
	43	191308.456967	474600.371087		
	49	195092.406816	474132.024059		
	51	190042.061394	474810.391510		
	53	191306.739284	474804.320974		
	54	192413.590710	474799.008016		
	55	192571.417174	474798.250439		
	57	193853.866400	474792.094599		
	59	195088.224429	474786.169601		
	61	190046.817533	475171.838884		
	75	192529.980302	476138.368741		
	76	193375.376492	476129.078617		
	77	193816.114400	476124.235314		
	79	195079.758071	476110.349036		
	89	195075.352560	476799.392452		
	91	189909.767892	477491.063717		
	92	190635.661766	477488.271836		
	95	192488.543430	477478.487044		
	97	193777.928752	477471.677992		
	98	194103.891303	477469.956632		
	99	195066.674031	477434.482493		
	100	195052.473393	478473.677471		
	101	193676.102148	476891.324231		
	102	193499.152189	476278.603711		
	103	192874.430488	475523.919445		
	104	192292.028092	474607.787258		
	105	191351.117521	474563.199404		
	106	191181.399308	474711.081018		
	107	190403.718530	475642.309183		
	108	190416.994588	476442.364668		
	109	190593.083127	477072.950143		

START					11	190006.806	472125.873
11	INV N	2-10-30.2 E	2646.043	15	192650.943	472226.297	
15	INV N	2-11-13.8 W	2455.960	19	195105.114	472132.568	
19	INV S	89-38-09.2 E	1999.496	49	195092.407	474132.024	
49	INV S	89-38-01.2 E	654.159	59	195088.224	474786.170	
59	INV S	89-38-01.2 E	2013.264	89	195075.353	476799.392	
89	INV S	89-13-01.6 E	635.149	99	195066.674	477434.482	
99	INV S	2-06-36.5 E	963.436	98	194103.891	477469.957	
98	INV S	0-18-09.2 E	1615.370	95	192488.543	477478.487	
95	INV S	0-18-09.2 E	1852.907	92	190635.662	477488.272	
92	INV S	0-13-13.3 E	725.899	91	189909.768	477491.064	
91	INV N	86-37-05.4 W	2323.271	61	190046.818	475171.839	
61	INV S	89-14-46.0 W	361.479	51	190042.061	474810.392	
51	INV S	89-14-46.0 W	672.337	41	190033.215	474138.113	
41	INV S	89-14-53.1 W	2012.413	11	190006.806	472125.873	
START				51	190042.061	474810.392	
51	INV N	0-16-30.1 W	2529.385	55	192571.417	474798.250	
55	INV N	0-16-30.1 W	2516.836	59	195088.224	474786.170	
START				15	192650.943	472226.297	
15	INV S	88-13-44.3 E	2573.182	55	192571.417	474798.250	
55	INV S	88-13-44.3 E	2681.518	95	192488.543	477478.487	

POINT-POINT ANGLES

ANGLE	41 -	11 -	15:	C.W.	272-55-37.1	C.C.W.	87-04-22.9	2646.043
ANGLE	11 -	15 -	19:	C.W.	175-38-16.0	C.C.W.	184-21-44.0	2455.960
ANGLE	15 -	19 -	49:	C.W.	272-33-04.6	C.C.W.	87-26-55.4	1999.496
ANGLE	19 -	49 -	59:	C.W.	180-00-08.0	C.C.W.	179-59-52.0	654.159
ANGLE	49 -	59 -	89:	C.W.	180-00-00.0	C.C.W.	180-00-00.0	2013.264
ANGLE	59 -	89 -	99:	C.W.	180-24-59.7	C.C.W.	179-35-00.3	635.149
ANGLE	89 -	99 -	98:	C.W.	267-06-25.1	C.C.W.	92-53-34.9	963.436
ANGLE	99 -	98 -	95:	C.W.	181-48-27.2	C.C.W.	178-11-32.8	1615.370
ANGLE	98 -	95 -	92:	C.W.	180-00-00.0	C.C.W.	180-00-00.0	1852.907
ANGLE	95 -	92 -	91:	C.W.	180-04-55.9	C.C.W.	179-55-04.1	725.899
ANGLE	92 -	91 -	61:	C.W.	273-36-07.9	C.C.W.	86-23-52.1	2323.271
ANGLE	91 -	61 -	51:	C.W.	175-51-51.4	C.C.W.	184-08-08.6	361.479
ANGLE	61 -	51 -	41:	C.W.	180-00-00.0	C.C.W.	180-00-00.0	672.337
ANGLE	51 -	41 -	11:	C.W.	180-00-07.1	C.C.W.	179-59-52.9	2012.413

Coordinates stored

Sunday May 28, 1995

8:51 AM