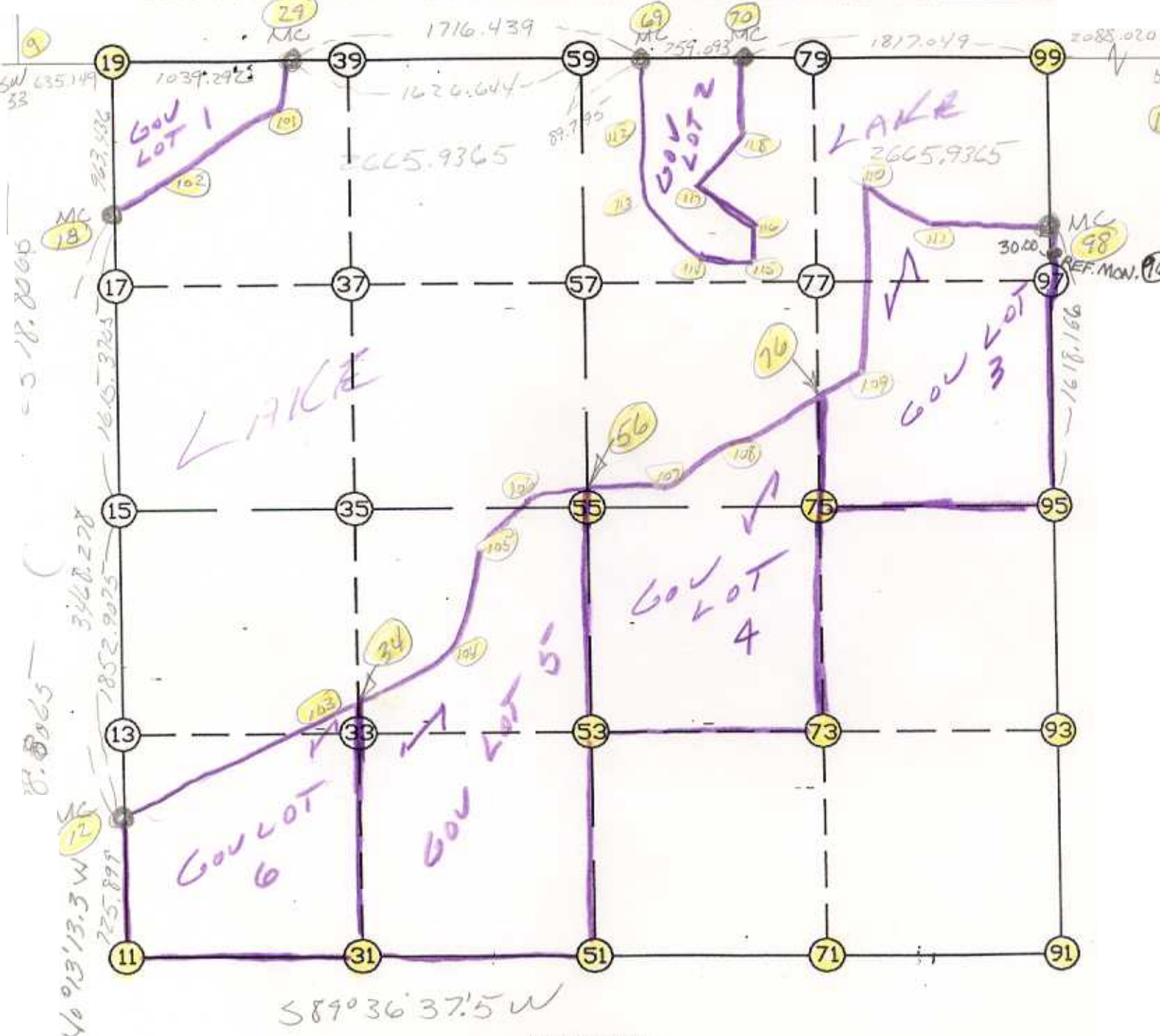


WRIGHT COUNTY SURVEYORS OFFICE

Public Works Building
Buffalo, Minn. 55313

SECTION 4 TOWNSHIP 120 RANGE 26



REMARKS

NOTE: N1/4 SET ON TOWN LINE MIDWAY BETWEEN
SECTION CORNERS - WITH POSITIONED ON LINE
BETWEEN M.C.'S 8 To Gov PROPORTION N-S

THE INFORMATION SHOWN HEREON IS A COMPILATION OF WRIGHT COUNTY RECORDS AND IS INTENDED TO BE USED FOR COMPARISON PURPOSES ONLY. THE COUNTY IS NOT RESPONSIBLE FOR ANY INACCURACIES HEREIN CONTAINED.

COGO =====

Friday May 26, 1995

2:34 PM

Coordinate File Name: SEC-04.CRD Lowest pt #: 1 Highest pt #: 118
 Job # : 95-27
 Description: COUNTY COORDINATES SECTION 4 T120 R26
 # of chars. in point descr.: 10

FROM TYPE	BEARING	DISTANCE	TO	NORTHING	EASTING
LIST POINTS					
POINT	NORTHING	EASTING	ELEVATION	DESCR	
9	195075.352560	476799.392452			
11	189909.767892	477491.063717			
12	190635.661766	477488.271836			
15	192488.543430	477478.487044			
18	194103.891303	477469.956632			
19	195066.674031	477434.482493			
29	195052.473393	478473.677471			
31	189918.961154	478843.045069			
34	191189.483466	478827.970488			
35	192518.857093	478812.197643			
51	189928.154417	480195.026421			
53	191238.662586	480170.467332			
55	192549.170755	480145.908243			
56	192429.064238	480148.159054			
59	195010.551051	480099.781664			
69	195008.236839	480189.546456			
70	194984.918021	480948.280956			
71	189940.801469	481509.875529			
73	191260.028572	481489.715195			
75	192579.255675	481469.554861			
76	192982.442876	481463.298240			
79	194978.657562	481432.321172			
91	189953.448521	482824.724638			
93	191281.394558	482808.963058			
95	192609.340595	482793.201479			
98	194227.391757	482773.923450			
99	194961.418717	482765.177996			
100	194934.415037	484853.023151			
101	194758.008797	478279.874852			
102	194337.120940	477787.666497			
103	191187.009821	478824.735948			
104	191591.453947	479353.587308			
105	192295.423674	479676.535931			
106	192412.695461	479878.460490			
107	192460.240239	480661.827423			
108	192648.253815	481119.921503			
109	193507.208771	482002.491236			
110	194281.957542	481905.638592			
111	194133.465743	482258.421309			
112	194510.758299	480184.149816			
113	194112.538083	480235.149306			
114	193861.623740	480474.672180			
115	193751.873215	481015.825387			
116	193832.782177	481018.738078			
117	194091.446039	480701.227424			
118	194625.658939	480889.590497			

START					11	189909.768	477491.064
11	INV N	0-13-13.3	W	725.899	12	190635.662	477488.272
12	INV N	0-18-09.2	W	1852.907	15	192488.543	477478.487
15	INV N	0-18-09.2	W	1615.370	18	194103.891	477469.957
18	INV N	2-06-36.5	W	963.436	19	195066.674	477434.482
19	INV S	89-13-01.6	E	1039.292	29	195052.473	478473.677
29	INV S	88-31-23.5	E	1626.644	59	195010.551	480099.782
59	INV S	88-31-23.5	E	89.795	69	195008.237	480189.546
69	INV S	88-14-22.7	E	759.093	70	194984.918	480948.281
70	INV S	89-15-32.4	E	1817.049	99	194961.419	482765.178
99	INV S	0-40-57.4	E	734.079	98	194227.392	482773.923
98	INV S	0-40-57.4	E	1618.166	95	192609.341	482793.201
95	INV S	0-40-48.1	E	2656.079	91	189953.449	482824.725
91	INV S	89-26-56.1	W	2629.820	51	189928.154	480195.026
51	INV S	89-36-37.5	W	2704.025	11	189909.768	477491.064
START					51	189928.154	480195.026
51	INV N	1-04-25.0	W	2621.477	55	192549.171	480145.908
55	INV N	1-04-25.0	W	2461.812	59	195010.551	480099.782
START					15	192488.543	477478.487
15	INV N	88-41-52.7	E	2668.110	55	192549.171	480145.908
55	INV N	88-41-52.7	E	2647.977	95	192609.341	482793.201

POINT-POINT ANGLES

ANGLE	51 -	11 -	12:	C.W.	270-10-09.2	C.C.W.	89-49-50.8	725.899
ANGLE	11 -	12 -	15:	C.W.	179-55-04.1	C.C.W.	180-04-55.9	1852.907
ANGLE	12 -	15 -	18:	C.W.	180-00-00.0	C.C.W.	180-00-00.0	1615.370
ANGLE	15 -	18 -	19:	C.W.	178-11-32.8	C.C.W.	181-48-27.2	963.436
ANGLE	18 -	19 -	29:	C.W.	272-53-34.9	C.C.W.	87-06-25.1	1039.292
ANGLE	19 -	29 -	59:	C.W.	180-41-38.1	C.C.W.	179-18-21.9	1626.644
ANGLE	29 -	59 -	69:	C.W.	180-00-00.0	C.C.W.	180-00-00.0	89.795
ANGLE	59 -	69 -	70:	C.W.	180-17-00.8	C.C.W.	179-42-59.2	759.093
ANGLE	69 -	70 -	99:	C.W.	178-58-50.3	C.C.W.	181-01-09.7	1817.049
ANGLE	70 -	99 -	98:	C.W.	268-34-35.0	C.C.W.	91-25-25.0	734.079
ANGLE	99 -	98 -	95:	C.W.	180-00-00.0	C.C.W.	180-00-00.0	1618.166
ANGLE	98 -	95 -	91:	C.W.	180-00-09.3	C.C.W.	179-59-50.7	2656.079
ANGLE	95 -	91 -	51:	C.W.	270-07-44.1	C.C.W.	89-52-15.9	2629.820
ANGLE	91 -	51 -	11:	C.W.	180-09-41.4	C.C.W.	179-50-18.6	2704.025

Coordinates stored

Friday May 26, 1995

2:36 PM