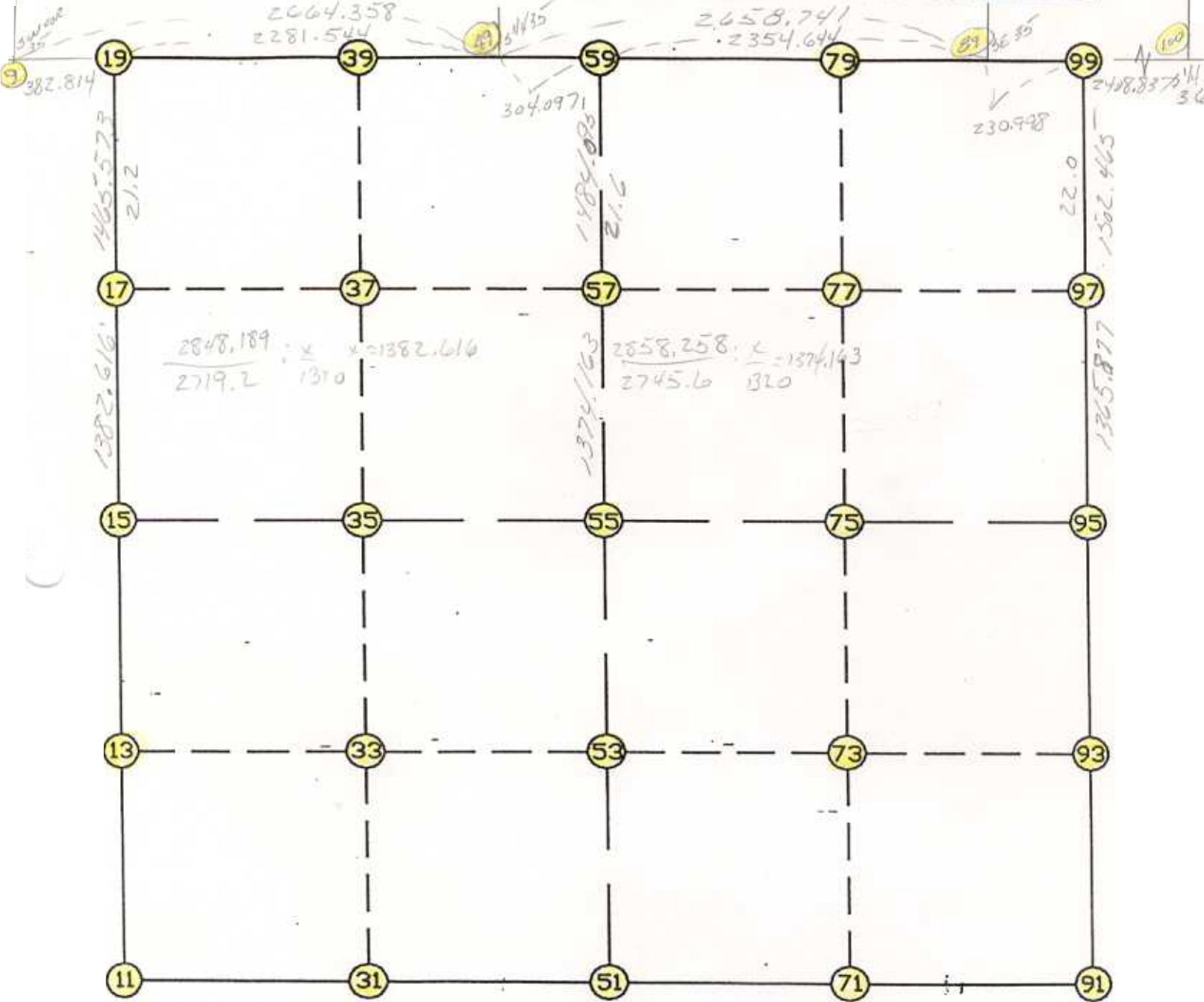


WRIGHT COUNTY SURVEYORS OFFICE

Public Works Building
Buffalo, Minn. 55313

SECTION 2 TOWNSHIP 120 RANGE 26



REMARKS

THE INFORMATION SHOWN HEREON IS A COMPILATION OF WRIGHT COUNTY RECORDS AND IS INTENDED TO BE USED FOR COMPARISON PURPOSES ONLY. THE COUNTY IS NOT RESPONSIBLE FOR ANY INACCURACIES HEREIN CONTAINED.

COGO =====

Friday May 26, 1995

12:44 PM

Coordinate File Name: SEC-02.CRD Lowest pt #: 1 Highest pt #: 100

Job # : 95-27

Description: COUNTY COORDINATES SECTION 2 T120 R26

of chars. in point descr.: 10

FROM TYPE	BEARING	DISTANCE	TO	NORTHING	EASTING
-----------	---------	----------	----	----------	---------

LIST POINTS	NORTHING	EASTING	ELEVATION	DESCR
-------------	----------	---------	-----------	-------

9	194919.723910	487502.438090		
11	189340.908611	487940.217348		
13	190706.923529	487923.067844		
15	192072.938446	487905.918339		
17	193455.518040	487895.884964		
19	194921.052510	487885.249585		
31	189342.366650	489239.876998		
33	190707.455482	489222.918804		
35	192072.544314	489205.960609		
37	193450.863781	489192.482569		
39	194925.539393	489178.062299		
49	194928.970873	490166.779844		
51	189343.824688	490539.536648		
53	190707.987435	490522.769764		
55	192072.150183	490506.002880		
57	193446.209399	490489.114358		
59	194930.192228	490470.874769		
71	189343.454529	491841.767063		
73	190707.604942	491825.056119		
75	192071.755354	491808.345175		
77	193441.601394	491786.981692		
79	194935.384621	491763.685341		
89	194939.649250	492825.499777		
91	189343.084371	493143.997479		
93	190707.222449	493127.342475		
95	192071.360526	493110.687470		
97	193436.993270	493084.882499		
99	194939.190108	493056.497014		
100	194934.402196	495465.329256		

START					11	189340.909	487940.217
11	INV N	0-43-09.4 W	2732.245	15	192072.938	487905.918	
15	INV N	0-24-56.8 W	2848.189	19	194921.053	487885.250	
19	INV N	89-48-04.1 E	2281.544	49	194928.971	490166.780	
49	INV N	89-46-11.6 E	304.097	59	194930.192	490470.875	
59	INV N	89-46-11.6 E	2354.644	89	194939.649	492825.500	
89	INV S	89-53-10.0 E	230.998	99	194939.190	493056.497	
99	INV S	1-04-57.1 E	2868.342	95	192071.361	493110.687	
95	INV S	0-41-58.2 E	2728.479	91	189343.084	493143.997	
91	INV N	89-59-01.4 W	2604.461	51	189343.825	490539.537	
51	INV S	89-56-08.6 W	2599.321	11	189340.909	487940.217	
START				51	189343.825	490539.537	
51	INV N	0-42-15.1 W	2728.532	55	192072.150	490506.003	
55	INV N	0-42-15.1 W	2858.258	59	194930.192	490470.875	
START				15	192072.938	487905.918	
15	INV S	89-58-57.5 E	2600.085	55	192072.150	490506.003	
55	INV S	89-58-57.5 E	2604.685	95	192071.361	493110.687	

POINT-POINT ANGLES

ANGLE	51 -	11 -	15:	C.W.	269-20-42.0	C.C.W.	90-39-18.0	2732.245
ANGLE	11 -	15 -	19:	C.W.	180-18-12.6	C.C.W.	179-41-47.4	2848.189
ANGLE	15 -	19 -	49:	C.W.	270-13-01.0	C.C.W.	89-46-59.0	2281.544
ANGLE	19 -	49 -	59:	C.W.	179-58-07.4	C.C.W.	180-01-52.6	304.097
ANGLE	49 -	59 -	89:	C.W.	180-00-00.0	C.C.W.	180-00-00.0	2354.644
ANGLE	59 -	89 -	99:	C.W.	180-20-38.4	C.C.W.	179-39-21.6	230.998
ANGLE	89 -	99 -	95:	C.W.	268-48-12.9	C.C.W.	91-11-47.1	2868.342
ANGLE	99 -	95 -	91:	C.W.	180-22-58.9	C.C.W.	179-37-01.1	2728.479
ANGLE	95 -	91 -	51:	C.W.	270-42-56.8	C.C.W.	89-17-03.2	2604.461
ANGLE	91 -	51 -	11:	C.W.	179-55-10.0	C.C.W.	180-04-50.0	2599.321

Coordinates stored

Friday May 26, 1995

12:46 PM