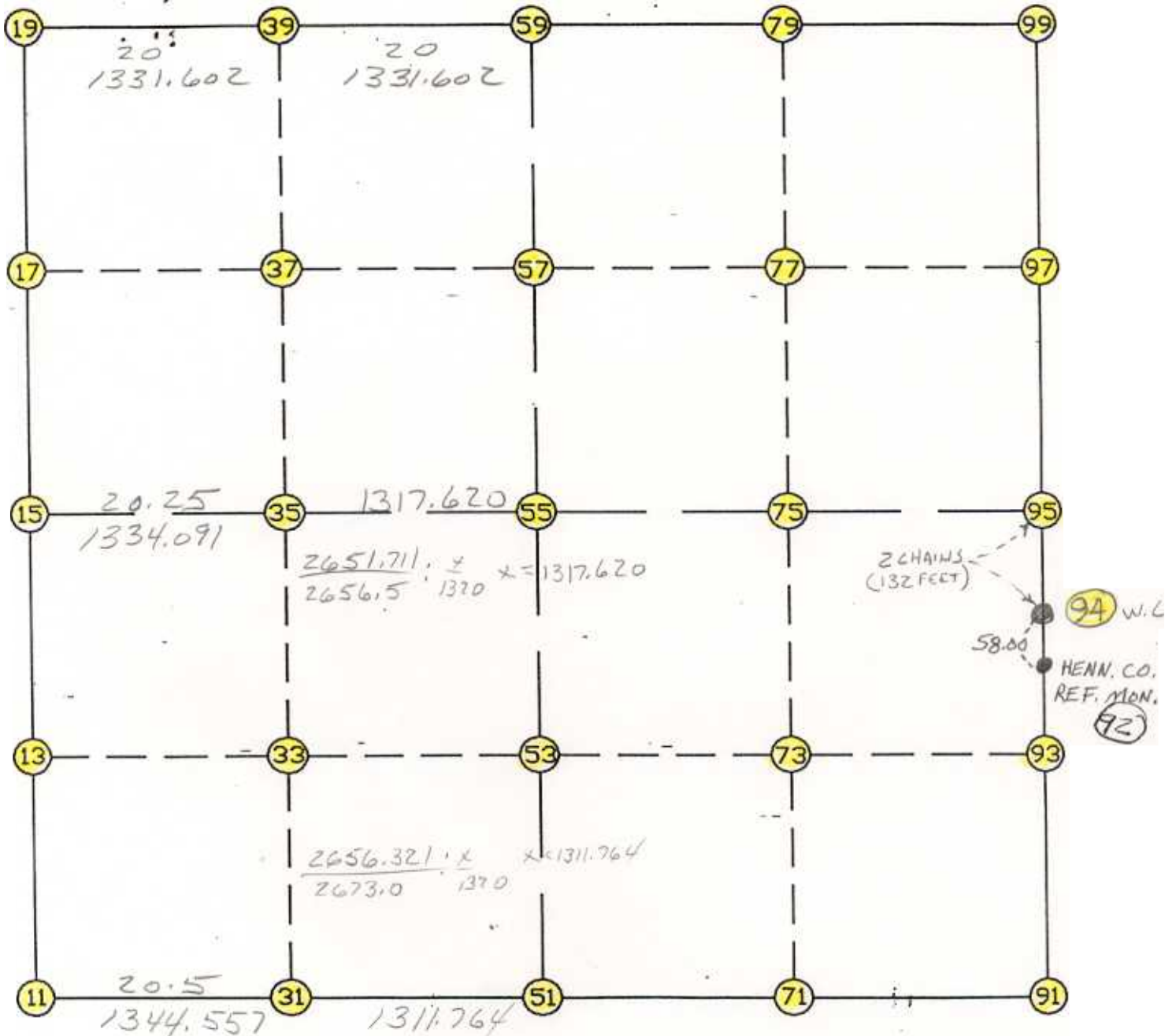


WRIGHT COUNTY SURVEYORS OFFICE

Public Works Building
Buffalo, Minn. 55313

SECTION 18 TOWNSHIP 120 RANGE 23



REMARKS

THE INFORMATION SHOWN HEREON IS A COMPILATION OF WRIGHT COUNTY RECORDS AND IS INTENDED TO BE USED FOR COMPARISON PURPOSES ONLY. THE COUNTY IS NOT RESPONSIBLE FOR ANY INACCURACIES HEREIN CONTAINED.

LIST POINTS POINT	NORTHING	EASTING	ELEVATION	DESCR
11	179617.479227	561531.536111		
13	180919.892858	561550.425005		
15	182222.306490	561569.313900		
17	183525.597985	561581.185525		
19	184828.889480	561593.057150		
31	179649.996375	562875.700028		
33	180949.045922	562889.427528		
35	182248.115176	562903.155236		
37	183561.424354	562913.513830		
39	184874.671427	562923.871935		
51	179681.720443	564187.080360		
53	180977.662835	564203.804623		
55	182273.605226	564220.528886		
57	183597.029301	564237.607803		
59	184920.453375	564254.686719		
71	179702.760560	565497.455865		
73	181000.693949	565505.433597		
75	182298.621393	565513.411293		
77	183615.975265	565524.533464		
79	184933.329137	565535.655636		
91	179723.800677	566807.831370		
93	181023.719489	566806.747519		
94	182191.638583	566805.773727		
95	182323.637559	566806.293699		
97	183634.921229	566811.459126		
99	184946.204900	566816.624552		

START							
11	INV N	0-49-51.2	E	2605.101	15	182222.306	561569.314
15	INV N	0-31-18.8	E	2606.691	19	184828.889	561593.057
19	INV N	88-01-47.0	E	2663.204	59	184920.453	564254.687
59	INV N	89-25-26.8	E	2562.067	99	184946.205	566816.625
99	INV S	0-13-32.5	W	2622.588	95	182323.638	566806.294
95	INV S	0-02-02.0	E	2599.837	91	179723.801	566807.831
91	INV S	89-04-48.4	W	2621.089	51	179681.720	564187.080
51	INV S	88-36-51.1	W	2656.321	11	179617.479	561531.536

51	INV N	0-44-21.7	E	2592.101	55	182273.605	564220.529
55	INV N	0-44-21.7	E	2647.069	59	184920.453	564254.687
15	INV N	88-53-29.5	E	2651.711	55	182273.605	564220.529
55	INV N	88-53-29.5	E	2586.249	95	182323.638	566806.294

POINT-POINT ANGLES

ANGLE	51 - 11 - 15:	C.W.	272-13-00.1	C.C.W.	87-46-59.9	2605.101
ANGLE	11 - 15 - 19:	C.W.	179-41-27.6	C.C.W.	180-18-32.4	2606.691
ANGLE	15 - 19 - 59:	C.W.	267-30-28.2	C.C.W.	92-29-31.8	2663.204
ANGLE	19 - 59 - 99:	C.W.	181-23-39.8	C.C.W.	178-36-20.2	2562.067
ANGLE	59 - 99 - 95:	C.W.	270-48-05.7	C.C.W.	89-11-54.3	2622.588
ANGLE	99 - 95 - 94:	C.W.	180-00-00.0	C.C.W.	180-00-00.0	132.000
ANGLE	95 - 94 - 91:	C.W.	179-43-35.5	C.C.W.	180-16-24.5	2467.839
ANGLE	94 - 91 - 51:	C.W.	269-07-40.4	C.C.W.	90-52-19.6	2621.089
ANGLE	91 - 51 - 11:	C.W.	179-32-02.8	C.C.W.	180-27-57.2	2656.321

Coordinates stored

Thursday January 26, 1995

1:22 PM