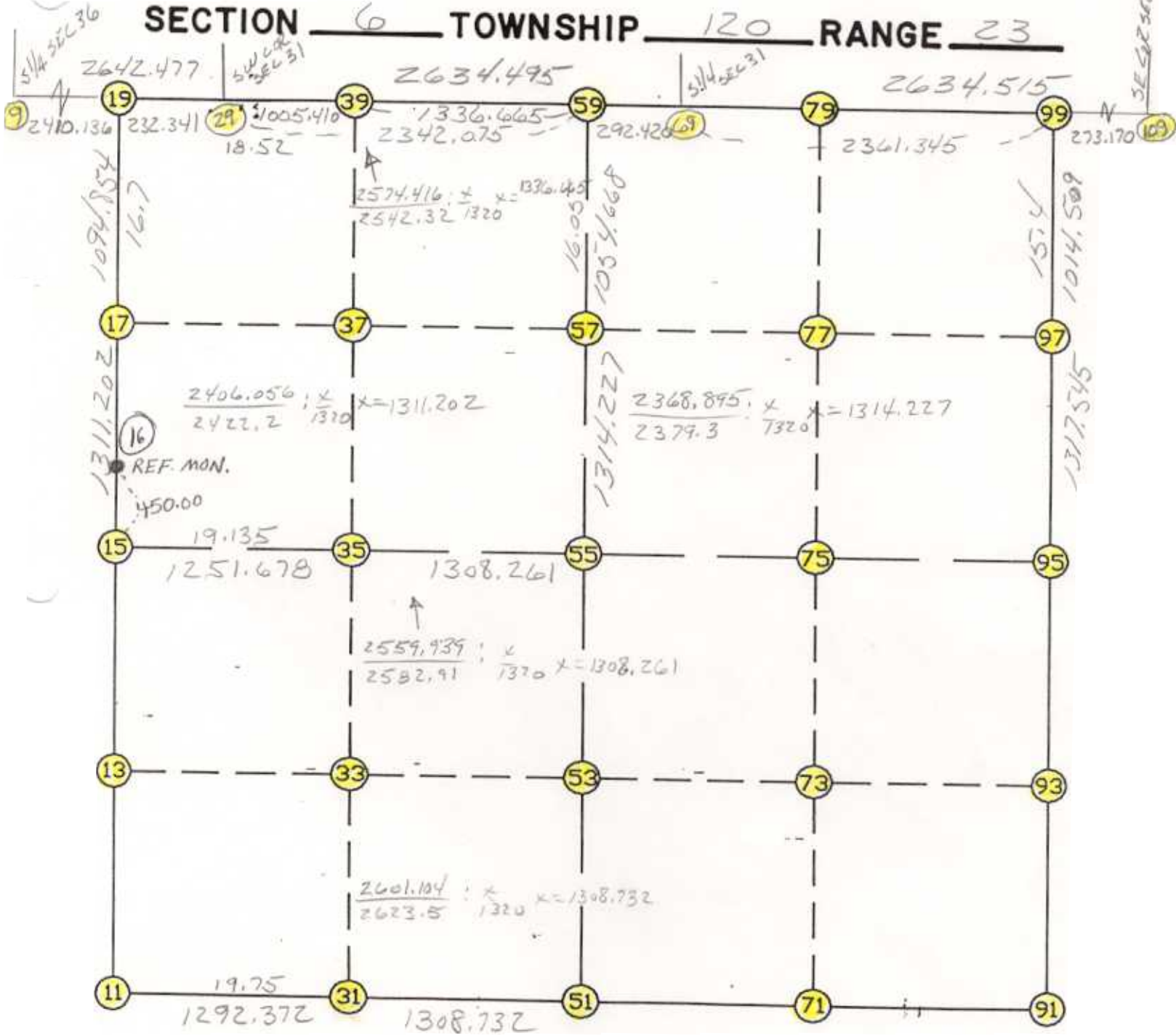


WRIGHT COUNTY SURVEYORS OFFICE

Public Works Building
Buffalo, Minn. 55313

SECTION 6 TOWNSHIP 120 RANGE 23



REMARKS

CLOSING CORNERS SET ON STANDARD PARALLEL

THE INFORMATION SHOWN HEREON IS A COMPILATION OF WRIGHT COUNTY RECORDS AND IS INTENDED TO BE USED FOR COMPARISON PURPOSES ONLY. THE COUNTY IS NOT RESPONSIBLE FOR ANY INACCURACIES HEREIN CONTAINED.

COGO =====

ursday January 26, 995

11:42 AM

Coordinate File Name: SEC-06.CRD Lowest pt #: 1 Highest pt #: 109
Job # : 95-08
Description: COUNTY COORDINATES SECTION T120 R23 - SECTION 6
of chars. in point descr.: 10

FROM TYPE BEARING DISTANCE TO NORTHING EASTING

LIST POINTS
POINT NORTHING EASTING ELEVATION DESCR

9	195050.679792	559335.809032		
11	190055.848970	561662.109183		
13	191356.324940	561697.799868		
15	192656.800910	561733.490553		
17	193967.985430	561740.261041		
19	195062.824783	561745.914400		
29	195063.995580	561978.252450		
31	190081.356267	562954.229053		
33	191382.388984	562969.557500		
35	192683.406196	562984.885764		
37	193995.776483	562984.200486		
39	195070.844915	562983.639119		
51	190107.186466	564262.706125		
53	191409.200333	564277.778833		
55	192711.214200	564292.851541		
57	194025.353146	564308.064615		
59	195079.950918	564320.273121		
69	195081.943024	564612.686335		
71	190129.393390	565550.126283		
73	191434.207491	565575.457426		
75	192739.021593	565600.788570		
77	194054.603659	565626.729366		
79	195088.964298	565647.125007		
91	190151.600314	566837.546440		
93	191459.214650	566873.136020		
95	192766.828986	566908.725599		
97	194083.858531	566945.590632		
99	195097.970331	566973.976681		
109	195099.824435	567247.140389		

START					11	190055.849	561662.109
11	INV N	1-34-19.4	E	2601.931	15	192656.801	561733.491
15	INV N	0-17-45.1	E	2406.056	19	195062.825	561745.914
19	INV N	89-42-40.6	E	232.341	29	195063.996	561978.252
29	INV N	89-36-34.8	E	2342.075	59	195079.951	564320.273
59	INV N	89-36-34.8	E	292.420	69	195081.943	564612.686
69	INV N	89-36-40.0	E	2361.345	99	195097.970	566973.977
99	INV S	1-36-12.1	W	2332.054	95	192766.829	566908.726
95	INV S	1-33-32.6	W	2616.197	91	190151.600	566837.546
91	INV S	89-00-42.5	W	2575.223	51	190107.186	564262.706
51	INV S	88-52-08.7	W	2601.104	11	190055.849	561662.109

START					51	190107.186	564262.706
51	INV N	0-39-47.7	E	2604.202	55	192711.214	564292.852
55	INV N	0-39-47.7	E	2368.895	59	195079.951	564320.273
START					15	192656.801	561733.491
15	INV N	88-46-55.4	E	2559.939	55	192711.214	564292.852
55	INV N	88-46-55.4	E	2616.465	95	192766.829	566908.726

POINT-POINT ANGLES

ANGLE	51 -	11 -	15:	C.W.	272-42-10.7	C.C.W.	87-17-49.3	2601.931
ANGLE	11 -	15 -	19:	C.W.	178-43-25.7	C.C.W.	181-16-34.3	2406.056
ANGLE	15 -	19 -	29:	C.W.	269-24-55.5	C.C.W.	90-35-04.5	232.341
ANGLE	19 -	29 -	59:	C.W.	179-53-54.2	C.C.W.	180-06-05.8	2342.075
ANGLE	29 -	59 -	69:	C.W.	180-00-00.0	C.C.W.	180-00-00.0	292.420
ANGLE	59 -	69 -	99:	C.W.	180-00-05.2	C.C.W.	179-59-54.8	2361.345
ANGLE	69 -	99 -	95:	C.W.	271-59-32.1	C.C.W.	88-00-27.9	2332.054
ANGLE	99 -	95 -	91:	C.W.	179-57-20.5	C.C.W.	180-02-39.5	2616.197
ANGLE	95 -	91 -	51:	C.W.	267-27-09.9	C.C.W.	92-32-50.1	2575.223
ANGLE	91 -	51 -	11:	C.W.	179-51-26.3	C.C.W.	180-08-33.7	2601.104

Coordinates stored Thursday January 26, 1995 11:43 AM