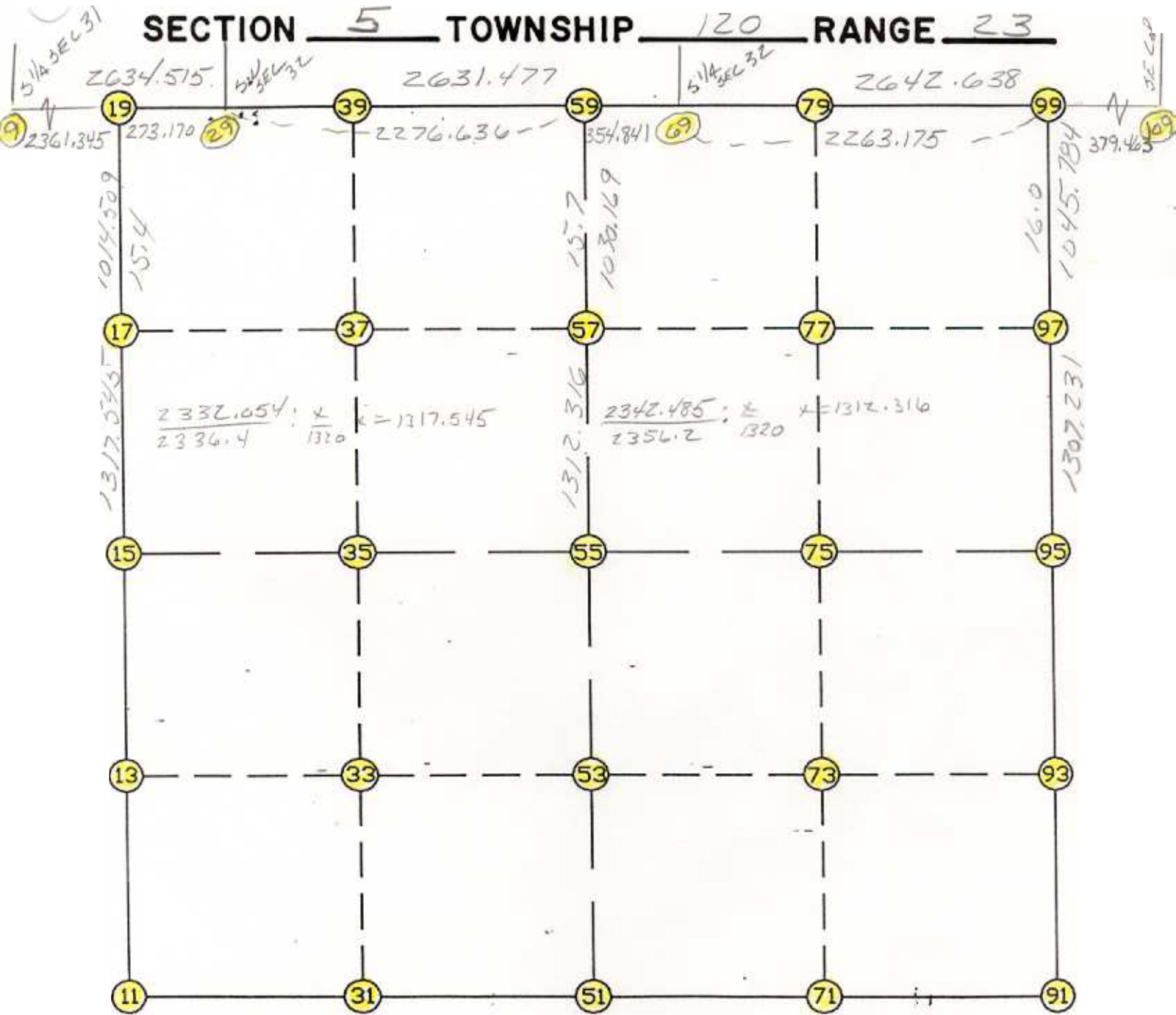


WRIGHT COUNTY SURVEYORS OFFICE

Public Works Building
Buffalo, Minn. 55313

SECTION 5 TOWNSHIP 120 RANGE 23



REMARKS

CLOSING CORNERS SET ON STANDARD
PARALLEL

THE INFORMATION SHOWN HEREON IS A COMPILATION OF WRIGHT COUNTY RECORDS AND IS INTENDED TO BE USED FOR COMPARISON PURPOSES ONLY. THE COUNTY IS NOT RESPONSIBLE FOR ANY INACCURACIES HEREIN CONTAINED.

COGO = == hursday January 26, 1995 10:36 AM

Coordinate File Name: SEC-05.CRD Lowest pt #: 1 highest pt #: 109
 Job # : 95-08
 Description: COUNTY COORDINATES SECTION 5 T120 R23
 # of chars. in point descr.: 10

FROM	TYPE	BEARING	DISTANCE	TO	NORTHING	EASTING
LIST POINTS						
POINT		NORTHING	EASTING		ELEVATION	DESCR
9		195081.943024	564612.686335			
11		190151.600314	566837.546440			
13		191459.214650	566873.136020			
15		192766.828986	566908.725599			
17		194083.858142	566945.590621			
19		195097.970331	566973.976681			
29		195099.824435	567247.140389			
31		190179.871511	568141.788937			
33		191473.626205	568169.730207			
35		192767.380899	568197.671476			
37		194081.971075	568226.467697			
39		195104.356169	568248.863138			
51		190208.142708	569446.031434			
53		191488.037760	569466.324394			
55		192767.932812	569486.617353			
57		194080.083894	569507.421738			
59		195110.123696	569523.753199			
69		195111.728959	569878.590568			
71		190202.047211	570748.530932			
73		191485.270383	570772.357333			
75		192768.493555	570796.183734			
77		194078.107949	570816.582327			
79		195115.972285	570832.748132			
91		190195.951715	572051.030430			
93		191482.503006	572078.390272			
95		192769.054298	572105.750115			
97		194076.131998	572125.746212			
99		195121.793643	572141.743083			
109		195123.481172	572521.202330			

START					11	190151.600	566837.546
11	INV N	1-33-32.6 E	2616.197	15	192766.829	566908.726	
15	INV N	1-36-12.1 E	2332.054	19	195097.970	566973.977	
19	INV N	89-36-40.0 E	273.170	29	195099.824	567247.140	
29	INV N	89-44-26.9 E	2276.636	59	195110.124	569523.753	
59	INV N	89-44-26.9 E	354.841	69	195111.729	569878.591	
69	INV N	89-44-42.7 E	2263.175	99	195121.794	572141.743	
99	INV S	0-52-35.3 W	2353.015	95	192769.054	572105.750	
95	INV S	1-13-05.8 W	2573.684	91	190195.952	572051.030	
91	INV N	89-43-54.7 W	2605.028	51	190208.143	569446.031	
51	INV S	88-45-29.6 W	2609.098	11	190151.600	566837.546	

START					51	190208.143	569446.031
51	INV N	0-54-30.1 E	2560.112	55	192767.933	569486.617	
55	INV N	0-54-30.1 E	2342.485	59	195110.124	569523.753	
START					15	192766.829	566908.726
15	INV N	89-58-31.7 E	2577.892	55	192767.933	569486.617	
55	INV N	89-58-31.7 E	2619.133	95	192769.054	572105.750	

POINT-POINT ANGLES

ANGLE	51 -	11 -	15:	C.W.	272-48-02.9	C.C.W.	87-11-57.1	2616.197
ANGLE	11 -	15 -	19:	C.W.	180-02-39.5	C.C.W.	179-57-20.5	2332.054
ANGLE	15 -	19 -	29:	C.W.	268-00-27.9	C.C.W.	91-59-32.1	273.170
ANGLE	19 -	29 -	59:	C.W.	180-07-46.9	C.C.W.	179-52-13.1	2276.636
ANGLE	29 -	59 -	69:	C.W.	180-00-00.0	C.C.W.	180-00-00.0	354.841
ANGLE	59 -	69 -	99:	C.W.	180-00-15.8	C.C.W.	179-59-44.2	2263.175
ANGLE	69 -	99 -	95:	C.W.	271-07-52.6	C.C.W.	88-52-07.4	2353.015
ANGLE	99 -	95 -	91:	C.W.	180-20-30.5	C.C.W.	179-39-29.5	2573.684
ANGLE	95 -	91 -	51:	C.W.	269-02-59.5	C.C.W.	90-57-00.5	2605.028
ANGLE	91 -	51 -	11:	C.W.	178-29-24.4	C.C.W.	181-30-35.6	2609.098

Coordinates stored

Thursday January 26, 1995

10:37 AM