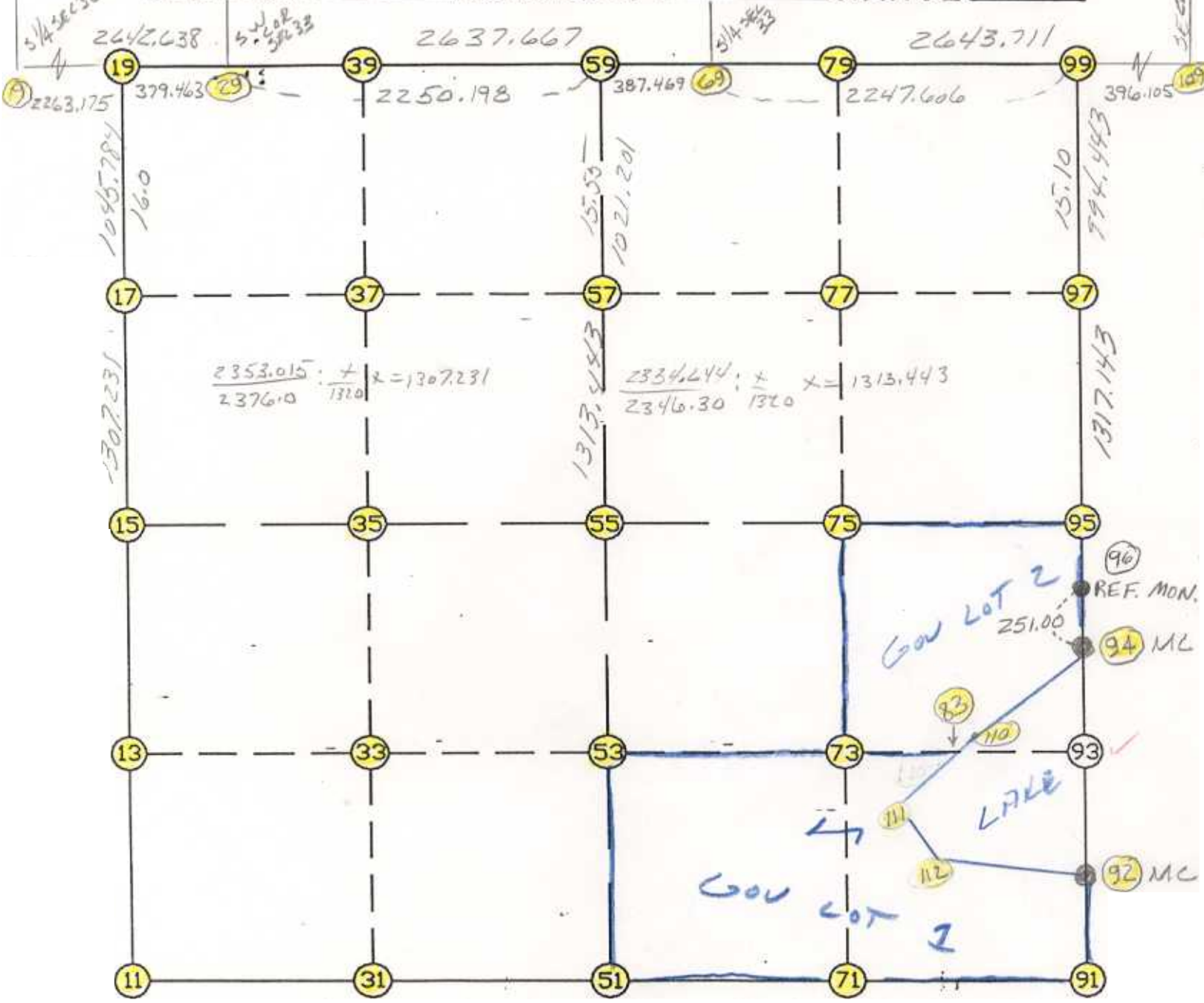


WRIGHT COUNTY SURVEYORS OFFICE

Public Works Building  
Buffalo, Minn. 55313

SECTION 4 TOWNSHIP 120 RANGE 23



REMARKS

CLOSING CORNERS SET ON STANDARD  
PARALLEL

THE INFORMATION SHOWN HEREON IS A COMPILATION OF WRIGHT COUNTY RECORDS AND IS INTENDED TO BE USED FOR COMPARISON PURPOSES ONLY. THE COUNTY IS NOT RESPONSIBLE FOR ANY INACCURACIES HEREIN CONTAINED.

COGO =====

Thursday January 26, 1995

10:06 AM

Coordinate File Name: SEC-04.CRD    Lowest pt #:    1    Highest pt #:    112  
Job #                : 95-08  
Description: COUNTY COORDINATES SECTION 4 T120 R23  
# of chars. in point descr.: 10

FROM TYPE	BEARING	DISTANCE	TO	NORTHING	EASTING
-----					
LIST POINTS					
POINT	NORTHING	EASTING	ELEVATION	DESCR	
-----					
9	195111.728959	569878.590568			
11	190195.951715	572051.030430			
13	191482.503006	572078.390272			
15	192769.054298	572105.750115			
17	194076.132353	572125.746218			
19	195121.793643	572141.743083			
29	195123.481172	572521.202330			
31	190200.268506	573341.108707			
33	191492.538863	573373.244444			
35	192784.809221	573405.380182			
37	194094.803605	573433.992928			
39	195127.963645	573456.559090			
51	190204.585297	574631.186983			
53	191502.574720	574668.098616			
55	192800.564144	574705.010249			
57	194113.476379	574742.346250			
59	195134.264584	574771.374961			
69	195136.121414	575158.839512			
71	190225.029948	575979.189550			
73	191520.812349	576003.558607			
75	192816.601372	576027.927788			
77	194131.438933	576062.446220			
79	195139.198102	576088.902923			
83	191529.227941	576619.794782			
91	190245.474599	577327.192117			
92	190773.632418	577332.553641			
93	191539.053799	577339.298403			
94	191846.454365	577342.007165			
95	192832.638600	577350.845327			
97	194149.401121	577382.519270			
99	195143.556546	577406.433090			
109	195144.866871	577802.535923			
110	191536.460259	576622.427001			
111	191112.168153	576468.004941			
112	190911.298669	576726.093741			

START					11	190195.952	572051.030
11	INV N	1-13-05.8	E	2573.684	15	192769.054	572105.750
15	INV N	0-52-35.3	E	2353.015	19	195121.794	572141.743
19	INV N	89-44-42.7	E	379.463	29	195123.481	572521.202
29	INV N	89-43-31.5	E	2250.198	59	195134.265	574771.375
59	INV N	89-43-31.5	E	387.469	69	195136.121	575158.840
69	INV N	89-48-37.7	E	2247.606	99	195143.557	577406.433
99	INV S	1-22-40.6	W	2311.586	95	192832.639	577350.845
95	INV S	0-30-48.5	W	986.224	94	191846.454	577342.007
94	INV S	0-30-17.5	W	1072.864	92	190773.632	577332.554
92	INV S	0-34-53.8	W	528.185	91	190245.475	577327.192
91	INV S	89-07-51.9	W	2696.315	51	190204.585	574631.187
51	INV S	89-48-29.8	W	2580.171	11	190195.952	572051.030

START					51	190204.585	574631.187
51	INV N	1-37-44.1	E	2597.028	55	192800.564	574705.010
55	INV N	1-37-44.1	E	2334.644	59	195134.265	574771.375
START					15	192769.054	572105.750
15	INV N	89-18-19.7	E	2599.451	55	192800.564	574705.010
55	INV N	89-18-19.7	E	2646.029	95	192832.639	577350.845

POINT-POINT ANGLES

ANGLE	51 -	11 -	15:	C.W.	271-24-36.0	C.C.W.	88-35-24.0	2573.684
ANGLE	11 -	15 -	19:	C.W.	179-39-29.5	C.C.W.	180-20-30.5	2353.015
ANGLE	15 -	19 -	29:	C.W.	268-52-07.4	C.C.W.	91-07-52.6	379.463
ANGLE	19 -	29 -	59:	C.W.	179-58-48.8	C.C.W.	180-01-11.2	2250.198
ANGLE	29 -	59 -	69:	C.W.	180-00-00.0	C.C.W.	180-00-00.0	387.469
ANGLE	59 -	69 -	99:	C.W.	180-05-06.1	C.C.W.	179-54-53.9	2247.606
<del>ANGLE</del>	<del>69 -</del>	<del>99 -</del>	<del>100:</del>	<del>C.W.</del>	<del>341-30-57.0</del>	<del>C.C.W.</del>	<del>18-29-02.2609490.982</del>	

POINT-POINT ANGLES

ANGLE	69 -	99 -	95:	C.W.	271-34-03.0	C.C.W.	88-25-57.0	2311.586
ANGLE	99 -	95 -	94:	C.W.	179-08-07.9	C.C.W.	180-51-52.1	986.224
ANGLE	95 -	94 -	92:	C.W.	179-59-29.0	C.C.W.	180-00-31.0	1072.864
ANGLE	94 -	92 -	91:	C.W.	180-04-36.3	C.C.W.	179-55-23.7	528.185
ANGLE	92 -	91 -	51:	C.W.	268-32-58.1	C.C.W.	91-27-01.9	2696.315
ANGLE	91 -	51 -	11:	C.W.	180-40-37.9	C.C.W.	179-19-22.1	2580.171
ANGLE	51 -	11 -	15:	C.W.	271-24-36.0	C.C.W.	88-35-24.0	2573.684

Coordinates stored

Thursday January 26, 1995

10:08 AM