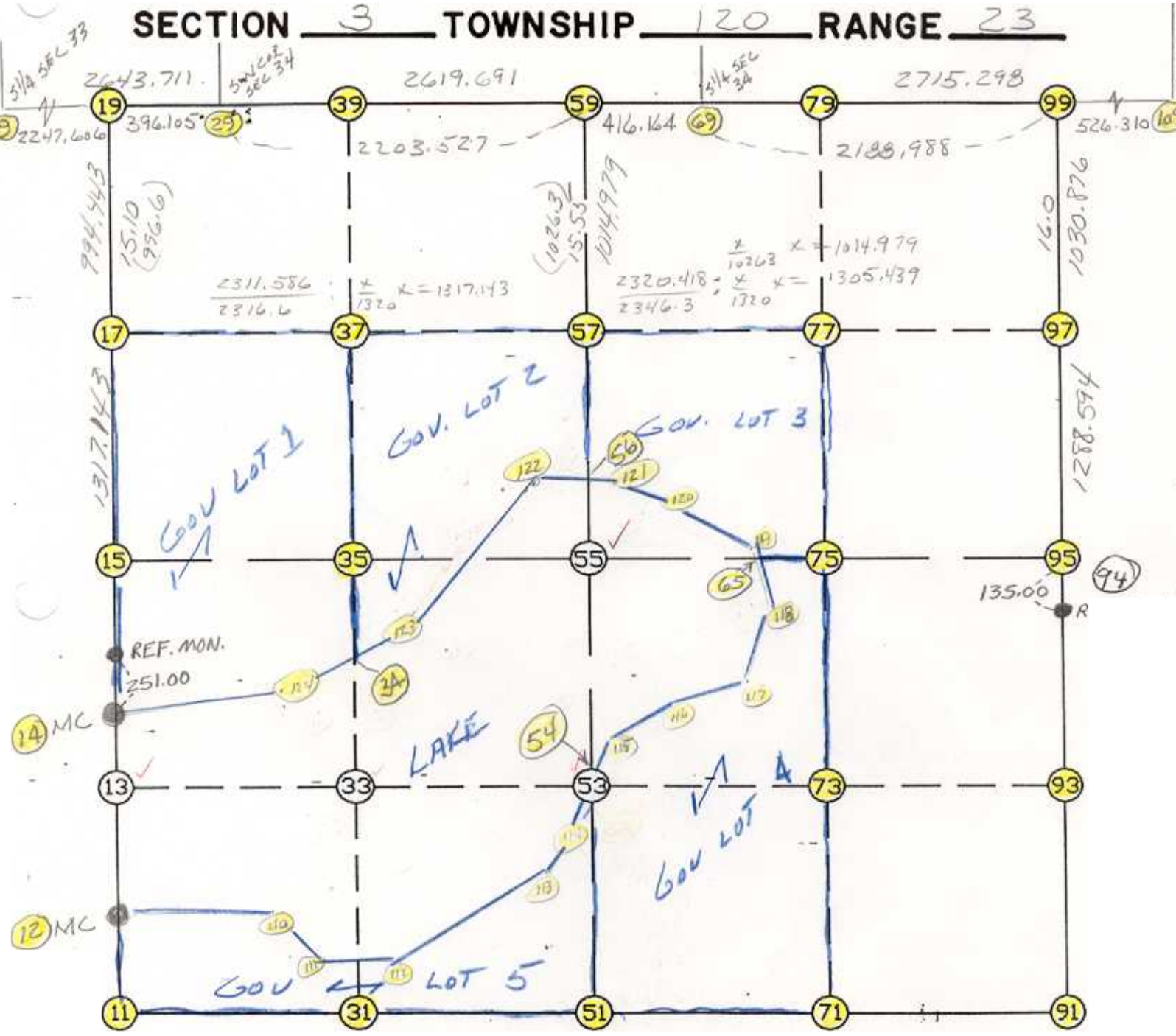


WRIGHT COUNTY SURVEYORS OFFICE

Public Works Building  
Buffalo, Minn. 55313

SECTION 3 TOWNSHIP 120 RANGE 23



REMARKS

CLOSING CORNERS SET ON  
STANDARD PARALLEL

THE INFORMATION SHOWN HEREON IS A COMPILATION OF WRIGHT COUNTY RECORDS AND IS INTENDED TO BE USED FOR COMPARISON PURPOSES ONLY. THE COUNTY IS NOT RESPONSIBLE FOR ANY INACCURACIES HEREIN CONTAINED.

Coordinate File Name: SEC-03.CRD    Lowest pt #:    1    Highest pt #:    124  
 Job #                : 95-08  
 Description: COUNTY COORDINATES SECTION 3 T120 R23  
 # of chars. in point descr.: 10

FROM TYPE	BEARING	DISTANCE	TO	NORTHING	EASTING
LIST POINTS					
POINT	NORTHING	EASTING	ELEVATION	DESCR	
9	195136.121414	575158.839512			
11	190245.474599	577327.192117			
12	190773.632418	577332.553641			
13	191539.054202	577339.298407			
14	191846.454365	577342.007165			
15	192832.638600	577350.845327			
17	194149.400706	577382.519260			
19	195143.556546	577406.433090			
29	195144.866871	577802.535923			
31	190265.597475	578642.393296			
33	191550.111279	578654.647659			
34	192629.865420	578664.948598			
35	192834.629832	578666.902066			
37	194145.698273	578689.175069			
39	195149.812072	578706.233392			
51	190285.720351	579957.594475			
53	191561.170708	579970.276640			
54	191689.515258	579971.552807			
55	192836.621064	579982.958805			
56	193818.626069	579992.723160			
57	194141.995535	579995.938514			
59	195156.924804	580006.030244			
65	192838.111150	580967.795047			
69	195159.202097	580422.188013			
71	190276.499656	581264.352556			
73	191557.551636	581278.815945			
75	192838.603617	581293.279334			
77	194135.584551	581301.840757			
79	195159.542916	581308.599948			
91	190267.278961	582571.110636			
93	191553.932565	582587.355249			
95	192840.586170	582603.599863			
97	194129.173245	582607.808526			
99	195160.043746	582611.175460			
109	195160.246109	583137.485421			
110	190799.683702	578195.975881			
111	190555.328027	578519.545430			
112	190554.149925	578986.663549			
113	190957.202361	579506.801548			
114	191175.943523	579750.694291			
115	192077.485408	580138.397096			
116	192331.910518	580600.917988			
117	192420.694663	580989.666281			
118	192673.110118	581034.427405			
119	192908.927201	580939.197404			
120	193283.279830	580491.851307			
121	193565.753630	580341.659805			
122	193831.164049	579975.422102			
123	193361.502549	579335.499344			
124	192262.577946	578328.326958			

START					11	190245.475	577327.192
	11	INV N	0-34-53.8 E	528.185	12	190773.632	577332.554
	12	INV N	0-30-17.5 E	1072.864	14	191846.454	577342.007
	14	INV N	0-30-48.5 E	986.224	15	192832.639	577350.845
	15	INV N	1-22-40.6 E	2311.586	19	195143.557	577406.433
	19	INV N	89-48-37.7 E	396.105	29	195144.867	577802.536
	29	INV N	89-41-11.3 E	2203.527	59	195156.925	580006.030
	59	INV N	89-41-11.3 E	416.164	69	195159.202	580422.188
	69	INV N	89-58-40.7 E	2188.988	99	195160.044	582611.175
	99	INV S	0-11-13.7 W	2319.470	95	192840.586	582603.600
	95	INV S	0-43-24.1 W	2573.512	91	190267.279	582571.111
	91	INV N	89-35-44.6 W	2613.581	51	190285.720	579957.594
	51	INV S	89-07-24.3 W	2630.710	11	190245.475	577327.192

START					51	190285.720	579957.594
	51	INV N	0-34-10.9 E	2551.027	55	192836.621	579982.959
	55	INV N	0-34-10.9 E	2320.418	59	195156.925	580006.030
START					15	192832.639	577350.845
	15	INV N	89-54-47.9 E	2632.116	55	192836.621	579982.959
	55	INV N	89-54-47.9 E	2620.644	95	192840.586	582603.600

POINT-POINT ANGLES

ANGLE	51 -	11 -	12:	C.W.	271-27-29.4	C.C.W.	88-32-30.6	528.185
ANGLE	11 -	12 -	14:	C.W.	179-55-23.7	C.C.W.	180-04-36.3	1072.864
ANGLE	12 -	14 -	15:	C.W.	180-00-31.0	C.C.W.	179-59-29.0	986.224
ANGLE	14 -	15 -	19:	C.W.	180-51-52.1	C.C.W.	179-08-07.9	2311.586
ANGLE	15 -	19 -	59:	C.W.	268-19-38.7	C.C.W.	91-40-21.3	2599.632
ANGLE	19 -	59 -	59:	C.W.	90-17-40.7	C.C.W.	269-42-19.3	0.000
ANGLE	59 -	59 -	69:	C.W.	269-41-11.3	C.C.W.	90-18-48.7	416.164
ANGLE	59 -	69 -	99:	C.W.	180-17-29.4	C.C.W.	179-42-30.6	2188.988
ANGLE	69 -	99 -	95:	C.W.	270-12-33.0	C.C.W.	89-47-27.0	2319.470
ANGLE	99 -	95 -	91:	C.W.	180-32-10.4	C.C.W.	179-27-49.6	2573.512
ANGLE	95 -	91 -	51:	C.W.	269-40-51.4	C.C.W.	90-19-08.6	2613.581
ANGLE	91 -	51 -	11:	C.W.	178-43-08.9	C.C.W.	181-16-51.1	2630.710
ANGLE	51 -	11 -	12:	C.W.	271-27-29.4	C.C.W.	88-32-30.6	528.185

Coordinates stored

Thursday January 26, 1995

8:37 AM