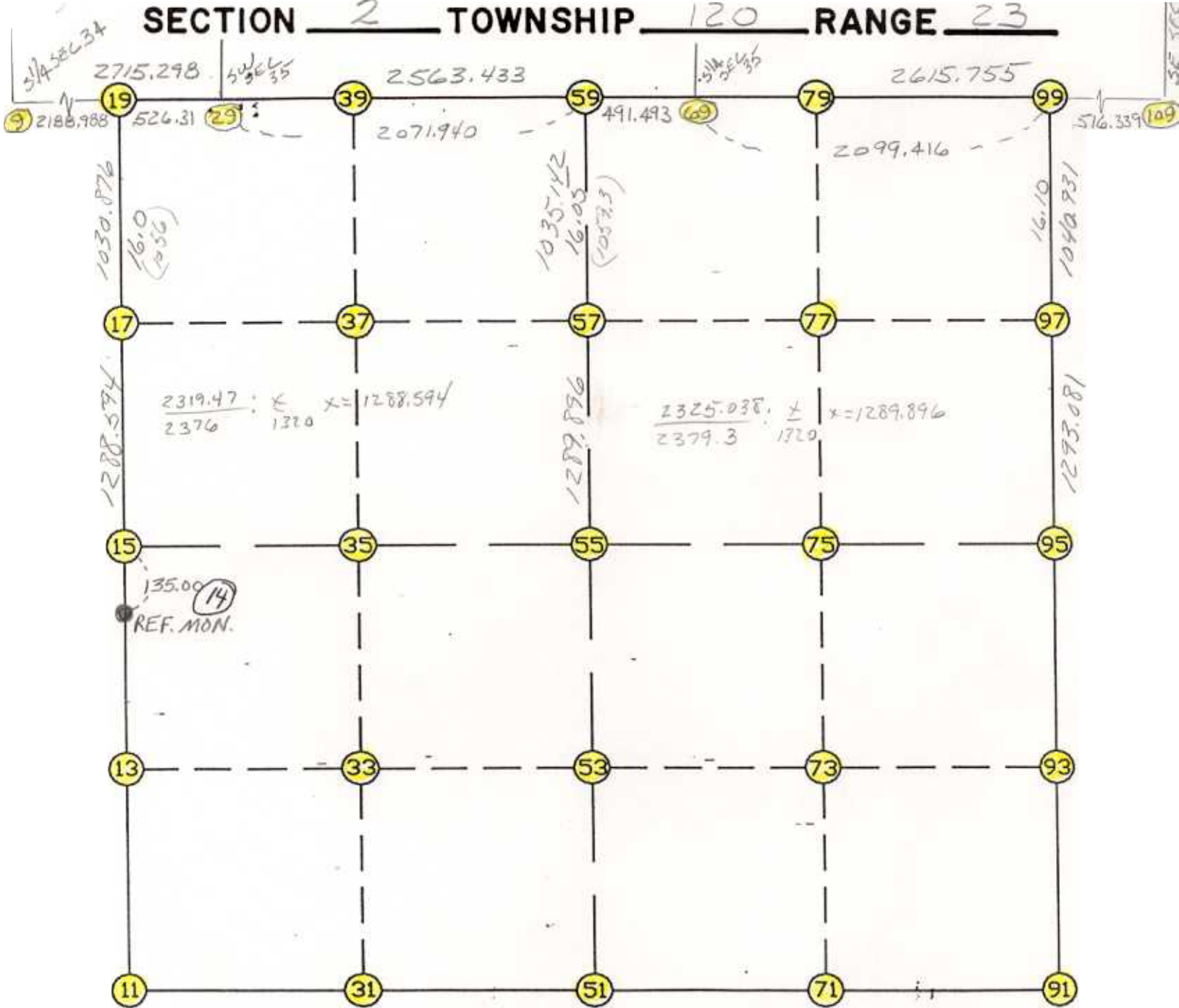


WRIGHT COUNTY SURVEYORS OFFICE

Public Works Building
Buffalo, Minn. 55313

SECTION 2 TOWNSHIP 120 RANGE 23



REMARKS

CLOSING CORNERS SET ON STANDARD
PARALLEL

THE INFORMATION SHOWN HEREON IS A COMPILATION OF WRIGHT COUNTY RECORDS AND IS INTENDED TO BE USED FOR COMPARISON PURPOSES ONLY. THE COUNTY IS NOT RESPONSIBLE FOR ANY INACCURACIES HEREIN CONTAINED.

===== COGO =====

Wednesday January 25, 1995

2:47 PM

Coordinate File Name: SEC-02.CRD Lowest pt #: 1 Highest pt #: 109
Job # : 95-08
Description: COUNTY COORDINATES SECTION 2 T120 R23
of chars. in point descr.: 10

FROM TYPE	BEARING	DISTANCE	TO	NORTHING	EASTING

LIST POINTS					
POINT	NORTHING	EASTING	ELEVATION	DESCR	

9	195159.202097	580422.188013			
11	190267.278961	582571.110636			
13	191553.932565	582587.355249			
15	192840.586170	582603.599863			
17	194129.173297	582607.808526			
19	195160.043746	582611.175460			
29	195160.246109	583137.485421			
31	190278.639053	583873.925369			
33	191560.434245	583886.322639			
35	192842.229438	583898.719910			
37	194131.456554	583905.148099			
39	195163.458547	583910.293744			
51	190289.999146	585176.740102			
53	191566.935925	585185.290030			
55	192843.872705	585193.839957			
57	194133.739792	585202.476462			
59	195168.858750	585209.407261			
69	195170.901788	585700.896014			
71	190291.460464	586478.716341			
73	191568.490353	586485.520409			
75	192845.520242	586492.324477			
77	194136.988955	586499.268006			
79	195174.830196	586504.847917			
91	190292.921783	587780.692580			
93	191570.044781	587785.750789			
95	192847.167779	587790.808997			
97	194140.238118	587796.059789			
99	195181.160191	587800.286678			
109	195183.683185	588316.619514			

START					11	190267.279	582571.111
11	INV N	0-43-24.1 E	2573.512	15	192840.586	582603.600	
15	INV N	0-11-13.7 E	2319.470	19	195160.044	582611.175	
19	INV N	89-58-40.7 E	526.310	29	195160.246	583137.485	
29	INV N	89-45-42.6 E	2071.940	59	195168.859	585209.407	
59	INV N	89-45-42.6 E	491.493	69	195170.902	585700.896	
69	INV N	89-43-12.1 E	2099.416	99	195181.160	587800.287	
99	INV S	0-13-57.6 W	2334.012	95	192847.168	587790.809	
95	INV S	0-13-36.9 W	2554.266	91	190292.922	587780.693	
91	INV S	89-56-08.5 W	2603.954	51	190289.999	585176.740	
51	INV S	89-30-01.5 W	2605.729	11	190267.279	582571.111	

START					51	190289.999	585176.740
51	INV N	0-23-01.1 E	2553.931	55	192843.873	585193.840	
55	INV N	0-23-01.1 E	2325.038	59	195168.859	585209.407	
START					15	192840.586	582603.600
15	INV N	89-55-38.3 E	2590.242	55	192843.873	585193.840	
55	INV N	89-55-38.3 E	2596.971	95	192847.168	587790.809	

POINT-POINT ANGLES

ANGLE	51 -	11 -	15:	C.W.	271-13-22.6	C.C.W.	88-46-37.4	2573.512
ANGLE	11 -	15 -	19:	C.W.	179-27-49.6	C.C.W.	180-32-10.4	2319.470
ANGLE	15 -	19 -	29:	C.W.	269-47-27.0	C.C.W.	90-12-33.0	526.310
ANGLE	19 -	29 -	59:	C.W.	179-47-01.9	C.C.W.	180-12-58.1	2071.940
ANGLE	29 -	59 -	69:	C.W.	180-00-00.0	C.C.W.	180-00-00.0	491.493
ANGLE	59 -	69 -	99:	C.W.	179-57-29.5	C.C.W.	180-02-30.5	2099.416
ANGLE	69 -	99 -	95:	C.W.	270-30-45.5	C.C.W.	89-29-14.5	2334.012
ANGLE	99 -	95 -	91:	C.W.	179-59-39.4	C.C.W.	180-00-20.6	2554.266
ANGLE	95 -	91 -	51:	C.W.	269-42-31.6	C.C.W.	90-17-28.4	2603.954
ANGLE	91 -	51 -	11:	C.W.	179-33-53.0	C.C.W.	180-26-07.0	2605.729

Coordinates stored

Wednesday January 25, 1995

2:49 PM