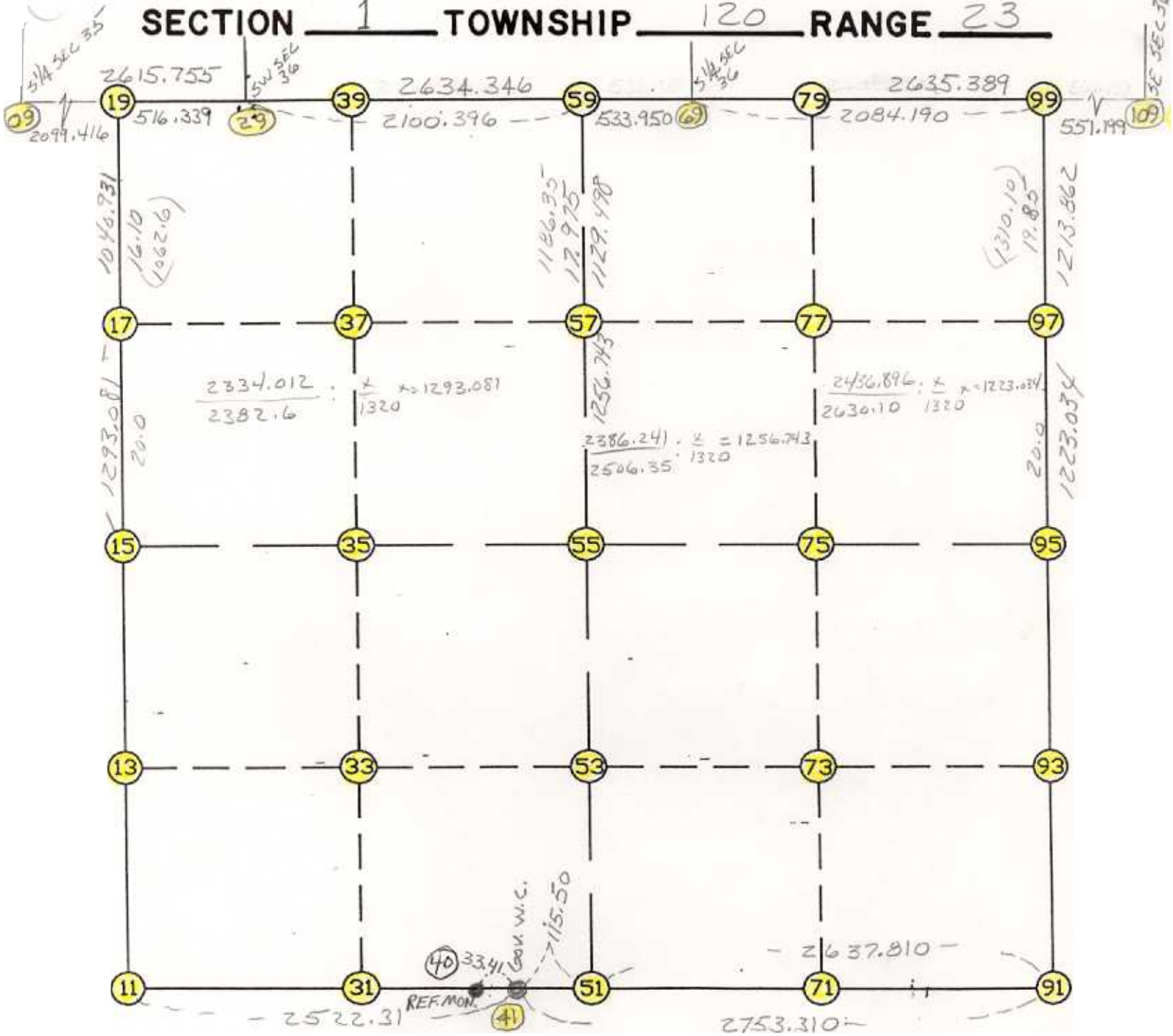


WRIGHT COUNTY SURVEYORS OFFICE
Public Works Building
Buffalo, Minn. 55313

SECTION 1 TOWNSHIP 120 RANGE 23



REMARKS

CLOSING CORNERS RESET TO STANDARD PARALLEL

THE INFORMATION SHOWN HEREON IS A COMPILATION OF WRIGHT COUNTY RECORDS AND IS INTENDED TO BE USED FOR COMPARISON PURPOSES ONLY. THE COUNTY IS NOT RESPONSIBLE FOR ANY INACCURACIES HEREIN CONTAINED.

START					41	190205.163	590301.476
41	INV N	88-00-22.0 W	2522.310	11	190292.922	587780.693	
11	INV N	0-13-36.9 E	2554.266	15	192847.168	587790.809	
15	INV N	0-13-57.6 E	2334.012	19	195181.160	587800.287	
19	INV N	89-43-12.1 E	516.339	29	195183.683	588316.620	
29	INV N	89-54-32.3 E	2100.396	59	195187.020	590417.013	
59	INV N	89-54-32.3 E	533.950	69	195187.868	590950.962	
69	INV N	89-53-43.7 E	2084.190	99	195191.671	593035.149	
99	INV S	0-24-20.3 W	2436.896	95	192754.836	593017.896	
95	INV S	0-45-47.2 E	2645.414	91	190109.657	593053.129	
91	INV N	88-00-43.7 W	2637.810	51	190201.157	590416.906	
51	INV N	88-00-43.7 W	115.500	41	190205.163	590301.476	
41	INV N	88-00-22.0 W	2522.310	11	190292.922	587780.693	

START					51	190201.157	590416.906
51	INV N	0-00-04.4 E	2599.622	55	192800.779	590416.962	
55	INV N	0-00-04.4 E	2386.241	59	195187.020	590417.013	
START					15	192847.168	587790.809
15	INV S	88-59-16.9 E	2626.562	55	192800.779	590416.962	
55	INV S	88-59-16.9 E	2601.341	95	192754.836	593017.896	

POINT-POINT ANGLES

ANGLE	41 - 11 -	15:	C.W.	268-13-58.9	C.C.W.	91-46-01.1	2554.266
ANGLE	11 - 15 -	19:	C.W.	180-00-20.6	C.C.W.	179-59-39.4	2334.012
ANGLE	15 - 19 -	29:	C.W.	269-29-14.5	C.C.W.	90-30-45.5	516.339
ANGLE	19 - 29 -	59:	C.W.	180-11-20.2	C.C.W.	179-48-39.8	2100.396
ANGLE	29 - 59 -	69:	C.W.	180-00-00.0	C.C.W.	180-00-00.0	533.950
ANGLE	59 - 69 -	99:	C.W.	179-59-11.4	C.C.W.	180-00-48.6	2084.190
ANGLE	69 - 99 -	95:	C.W.	270-30-36.6	C.C.W.	89-29-23.4	2436.896
ANGLE	99 - 95 -	96:	C.W.	251-35-17.2	C.C.W.	108-24-42.06	23558.058

POINT-POINT ANGLES

ANGLE	69 - 99 -	95:	C.W.	270-30-36.6	C.C.W.	89-29-23.4	2436.896
ANGLE	99 - 95 -	91:	C.W.	178-49-52.5	C.C.W.	181-10-07.5	2645.414
ANGLE	95 - 91 -	51:	C.W.	272-45-03.5	C.C.W.	87-14-56.5	2637.810
ANGLE	91 - 51 -	41:	C.W.	180-00-00.0	C.C.W.	180-00-00.0	115.500
ANGLE	51 - 41 -	11:	C.W.	180-00-21.7	C.C.W.	179-59-38.3	2522.310