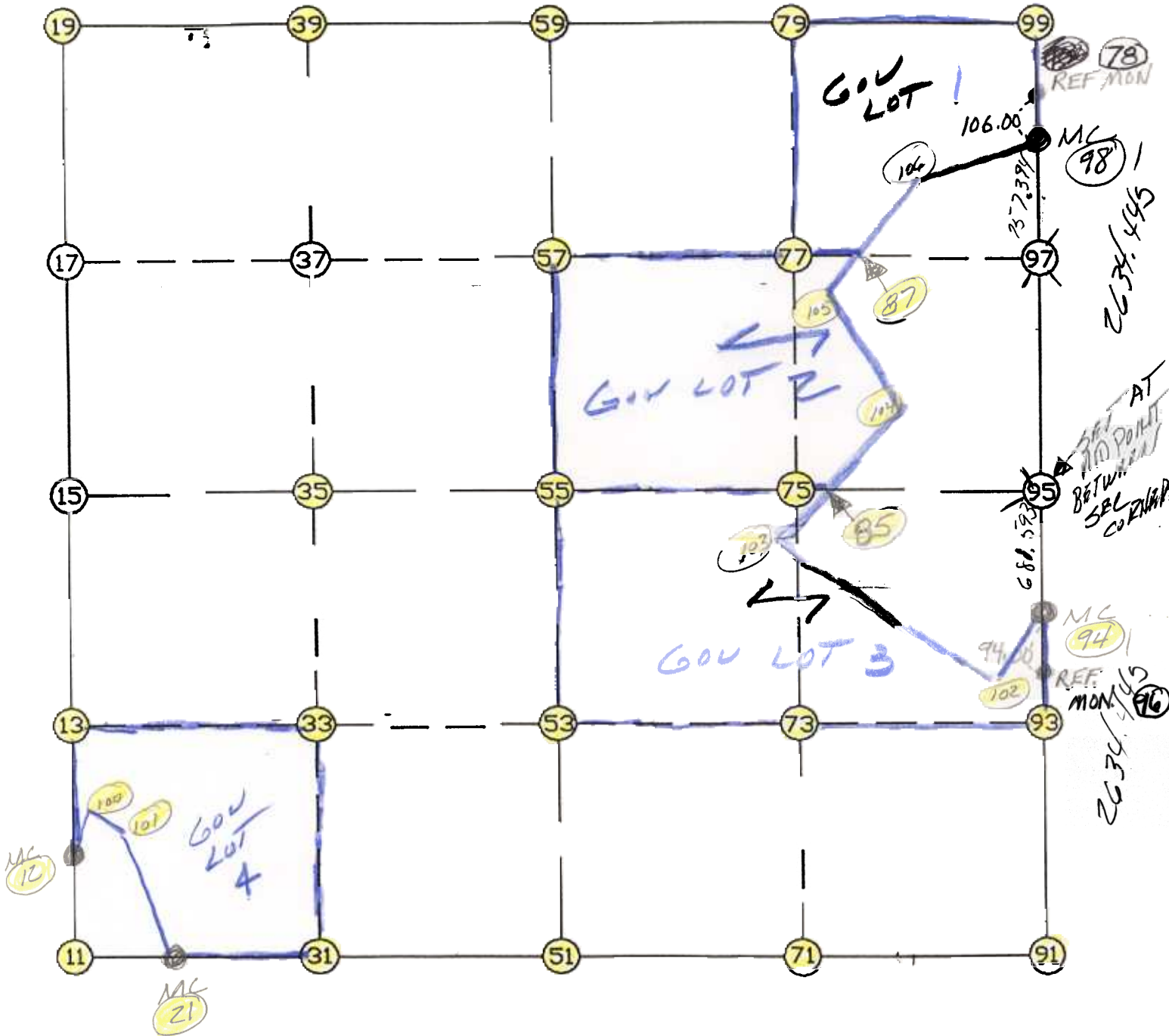


WRIGHT COUNTY SURVEYORS OFFICE

Public Works Building  
Buffalo, Minn. 55313

SECTION 36 TOWNSHIP 119 RANGE 28



REMARKS

---

---

---

THE INFORMATION SHOWN HEREON IS A COMPILATION OF WRIGHT COUNTY RECORDS AND IS INTENDED TO BE USED FOR COMPARISON PURPOSES ONLY. THE COUNTY IS NOT RESPONSIBLE FOR ANY INACCURACIES HEREIN CONTAINED.

===== COGO =====

Monday February 27, 1995

1:45 PM

Coordinate File Name: SEC-36.CRD Lowest pt #: 1 Highest pt #: 106

Job # : 95-15

Description: COUNTY COORDINATES SECTION 36 T119 R28

# of chars. in point descr.: 10

FROM TYPE	BEARING	DISTANCE	TO	NORTHING	EASTING
-----------	---------	----------	----	----------	---------

LIST POINTS

POINT	NORTHING	EASTING	ELEVATION	DESCR
-------	----------	---------	-----------	-------

11	132130.292880	429869.149949		
12	132238.677525	429868.872466		
13	133444.043109	429865.786535		
15	134757.793338	429862.423122		
17	136062.318085	429837.685897		
19	137366.842831	429812.948672		
21	132126.728000	430482.675000		
31	132122.668050	431181.502876		
33	133437.733308	431170.026095		
35	134752.798566	431158.549314		
37	136084.045902	431136.076162		
39	137415.293239	431113.603010		
51	132115.043219	432493.855804		
53	133431.423506	432474.265655		
55	134747.803793	432454.675506		
57	136105.773720	432434.466427		
59	137463.743646	432414.257348		
71	132109.083173	433803.342331		
73	133425.861222	433799.094889		
75	134742.639285	433794.847447		
77	136080.211832	433790.314268		
79	137417.784741	433785.781087		
85	134741.479996	434095.678794		
87	136071.390728	434258.201257		
91	132103.123126	435112.828857		
93	133420.298979	435123.914331		
94	134055.906079	435129.263659		
95	134737.474776	435135.019389		
97	136054.650310	435146.142709		
98	136812.017194	435152.538541		
99	137371.825835	435157.304827		
100	132375.096715	429893.240272		
101	132332.452114	429967.243477		
102	133539.723277	435111.650989		
103	134487.176418	433833.838959		
104	135093.310156	434457.935398		
105	135731.048589	433964.006498		
106	136490.104119	434620.140819		

~~SEC~~

~~36~~

~~SEC~~

START					11	132130.293	429869.150	SEC
	11	INV N	0-08-48.1 W	108.385	12	132238.678	429868.872	
	12	INV N	0-08-48.1 W	2519.124	15	134757.793	429862.423	
	15	INV N	1-05-10.9 W	2609.519	19	137366.843	429812.949	
	19	INV N	87-52-00.0 E	2603.113	59	137463.744	432414.257	
	59	INV S	88-04-50.8 E	2744.587	99	137371.826	435157.305	
	99	INV S	0-29-16.1 W	559.829	98	136812.017	435152.539	
	98	INV S	0-29-01.8 W	2756.209	94	134055.906	435129.264	
	94	INV S	0-28-55.9 W	1952.852	91	132103.123	435112.829	SEC
	91	INV N	89-44-21.2 W	2619.000	51	132115.043	432493.856	36
	51	INV N	89-40-01.6 W	2624.750	11	132130.293	429869.150	SEC
START					51	132115.043	432493.856	36
	51	INV N	0-51-09.4 W	2633.052	55	134747.804	432454.676	
	55	INV N	0-51-09.4 W	2716.241	59	137463.744	432414.257	
START					15	134757.793	429862.423	
	15	INV S	89-46-45.1 E	2592.272	55	134747.804	432454.676	
	55	INV S	89-46-45.1 E	2680.364	95	134737.475	435135.019	

POINT-POINT ANGLES

ANGLE	51 -	11 -	15:	C.W.	269-31-13.5	C.C.W.	90-28-46.5	2627.509
ANGLE	11 -	15 -	19:	C.W.	179-03-37.2	C.C.W.	180-56-22.8	2609.519
ANGLE	15 -	19 -	59:	C.W.	268-57-10.9	C.C.W.	91-02-49.1	2603.113
ANGLE	19 -	59 -	99:	C.W.	184-03-09.2	C.C.W.	175-56-50.8	2744.587
ANGLE	59 -	99 -	98:	C.W.	268-34-06.9	C.C.W.	91-25-53.1	559.829
ANGLE	99 -	98 -	94:	C.W.	179-59-45.7	C.C.W.	180-00-14.3	2756.209
ANGLE	98 -	94 -	91:	C.W.	179-59-54.1	C.C.W.	180-00-05.9	1952.852
ANGLE	94 -	91 -	51:	C.W.	269-46-42.9	C.C.W.	90-13-17.1	2619.000
ANGLE	91 -	51 -	11:	C.W.	180-04-19.6	C.C.W.	179-55-40.4	2624.750

Coordinates stored

Monday February 27, 1995

1:47 PM