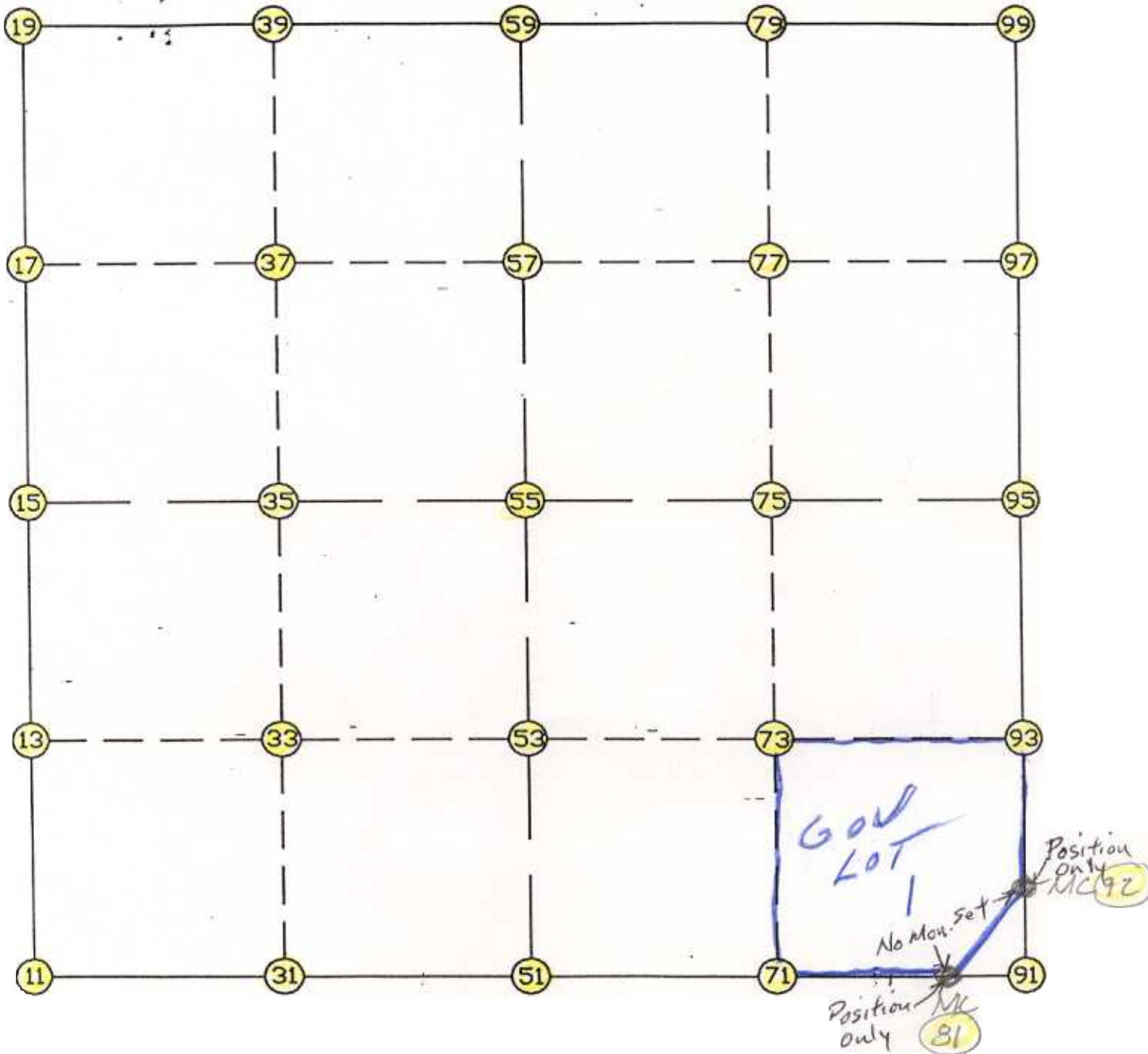


WRIGHT COUNTY SURVEYORS OFFICE

Public Works Building  
Buffalo, Minn. 55313

SECTION 35 TOWNSHIP 119 RANGE 28



REMARKS

---

---

---

THE INFORMATION SHOWN HEREON IS A COMPILATION OF WRIGHT COUNTY RECORDS AND IS INTENDED TO BE USED FOR COMPARISON PURPOSES ONLY. THE COUNTY IS NOT RESPONSIBLE FOR ANY INACCURACIES HEREIN CONTAINED.

=====

Monday February 27, 1995

1:18 PM

Coordinate File Name: SEC-35.CRD    Lowest pt #:    1    Highest pt #:    99  
 Job #                    : 95-15  
 Description: COUNTY COORDINATES SECTION 35 T119 R28  
 # of chars. in point descr.: 10

-----  
 FROM TYPE                    BEARING    DISTANCE    TO            NORTHING            EASTING  
 -----

LIST POINTS

POINT	NORTHING	EASTING	ELEVATION	DESCR
11	132152.157674	424616.650558		<del>35</del>
13	133466.342138	424621.744903		
15	134780.526603	424626.839248		
17	136091.705801	424633.140124		
19	137402.885000	424639.441000		<del>35</del>
31	132146.521437	425930.394706		
33	133460.674619	425934.848217		
35	134774.827801	425939.301728		
37	136089.211784	425944.363533		
39	137403.595767	425949.425339		
51	132140.885200	427244.138853		<del>35</del>
53	133455.007099	427247.951530		
55	134769.128998	427251.764207		
57	136086.717766	427255.586943		
59	137404.306534	427259.409678		
71	132135.589040	428556.644401		
73	133449.525104	428556.869033		
75	134763.461168	428557.093665		
77	136074.517925	428546.636420		
79	137385.574682	428536.179175		
81	132130.730000	429760.868000		
91	132130.292880	429869.149949		<del>SEC</del>
92	132238.677525	429868.872466		
93	133444.043109	429865.786535		
95	134757.793338	429862.423122		
97	136062.318085	429837.685897		
99	137366.842831	429812.948672		

START				11	132152.158	424616.651	35
11	INV N	0-13-19.6 E	2628.389	15	134780.527	424626.839	
15	INV N	0-16-31.2 E	2622.389	19	137402.885	424639.441	35
19	INV N	89-58-08.1 E	2619.969	59	137404.307	427259.410	
59	INV S	89-09-34.0 E	2553.814	99	137366.843	429812.949	
99	INV S	1-05-10.9 E	2609.519	95	134757.793	429862.423	
95	INV S	0-08-48.1 E	2519.124	92	132238.678	429868.872	
92	INV S	0-08-48.1 E	108.385	91	132130.293	429869.150	SEC
91	INV N	89-46-07.3 W	108.283	81	132130.730	429760.868	
81	INV N	89-46-07.7 W	2516.750	51	132140.885	427244.139	35
51	INV N	89-45-15.1 W	2627.512	11	132152.158	424616.651	35
START				51	132140.885	427244.139	35
51	INV N	0-09-58.4 E	2628.255	55	134769.129	427251.764	
55	INV N	0-09-58.4 E	2635.189	59	137404.307	427259.410	
START				15	134780.527	424626.839	
15	INV S	89-45-04.4 E	2624.950	55	134769.129	427251.764	
55	INV S	89-45-04.4 E	2610.684	95	134757.793	429862.423	

POINT-POINT ANGLES

ANGLE	51 -	11 -	15:	C.W.	269-58-34.7	C.C.W.	90-01-25.3	2628.389
ANGLE	11 -	15 -	19:	C.W.	180-03-11.6	C.C.W.	179-56-48.4	2622.389
ANGLE	15 -	19 -	59:	C.W.	269-41-36.9	C.C.W.	90-18-23.1	2619.969
ANGLE	19 -	59 -	99:	C.W.	180-52-17.9	C.C.W.	179-07-42.1	2553.814
ANGLE	59 -	99 -	95:	C.W.	268-04-23.2	C.C.W.	91-55-36.8	2609.519
ANGLE	99 -	95 -	91:	C.W.	180-56-22.8	C.C.W.	179-03-37.2	2627.509
ANGLE	95 -	91 -	51:	C.W.	270-22-40.4	C.C.W.	89-37-19.6	2625.032
ANGLE	91 -	51 -	11:	C.W.	180-00-52.6	C.C.W.	179-59-07.4	2627.512

Coordinates stored

Monday February 27, 1995

1:19 PM