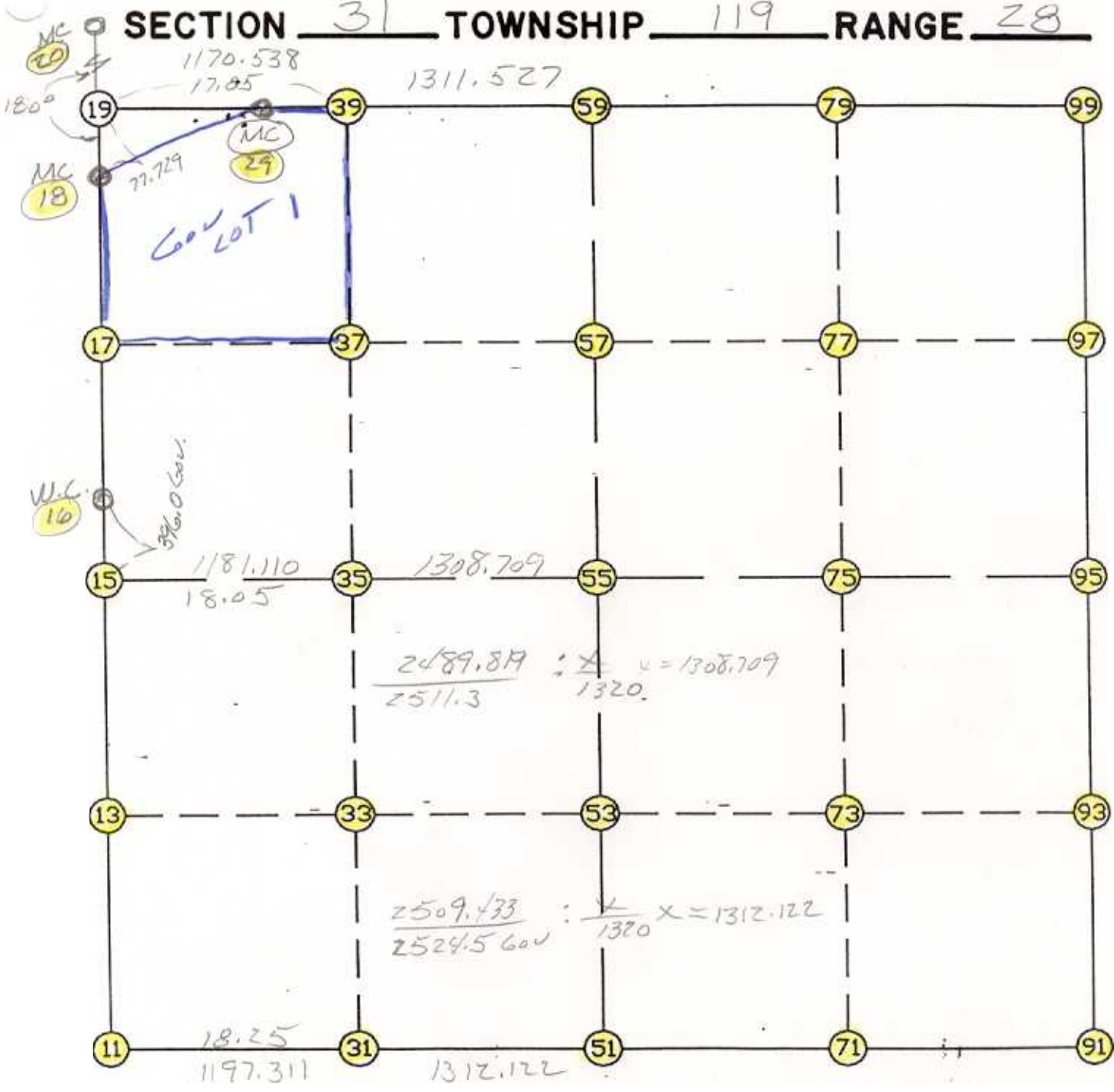


WRIGHT COUNTY SURVEYORS OFFICE

Public Works Building
Buffalo, Minn. 55313

SECTION 31 TOWNSHIP 119 RANGE 28



REMARKS

THE INFORMATION SHOWN HEREON IS A COMPILATION OF WRIGHT COUNTY RECORDS AND IS INTENDED TO BE USED FOR COMPARISON PURPOSES ONLY. THE COUNTY IS NOT RESPONSIBLE FOR ANY INACCURACIES HEREIN CONTAINED.

Job # : 95-15

Description: COUNTY COORDINATES SECTION 31 T119 R28

of chars. in point descr.: 10

FROM TYPE	BEARING	DISTANCE	TO	NORTHING	EASTING
LIST POINTS					
POINT	NORTHING	EASTING	ELEVATION	DESCR	
11	132612.909000	403688.611000			31
13	133935.020450	403700.598998			
15	135257.131900	403712.586995			
16	135653.115623	403716.177503			
17	136571.054918	403719.413541			
18	137807.263176	403723.771581			
19	137884.991139	403724.172967			
20	140694.168455	403738.679534			
29	137864.656701	404533.785645			
31	132587.277677	404885.647618			
33	133905.901167	404889.447477			
35	135224.545903	404893.247397			
37	136540.088564	404893.794470			
39	137855.600887	404894.341531			
51	132559.188557	406197.468490			31
53	133873.814050	406199.463242			
55	135188.439544	406201.457994			
57	136505.555085	406203.456524			
59	137822.670626	406205.455054			
71	132527.506432	407508.259890			
73	133839.609777	407520.197352			
75	135151.713122	407532.134815			
77	136467.112418	407520.944241			
79	137782.511714	407509.753667			
91	132495.824307	408819.051290			32
93	133805.405504	408840.931463			
95	135114.986701	408862.811636			
97	136428.669751	408838.431958			
99	137742.352801	408814.052280			

START				11	132612.909	403688.611	31
11	INV N	0-31-10.2 E	2644.332	15	135257.132	403712.587	
15	INV N	0-31-10.2 E	396.000	16	135653.116	403716.178	
16	INV N	0-12-07.1 E	2154.161	18	137807.263	403723.772	
18	INV N	0-17-45.1 E	77.729	19	137884.991	403724.173	
19	INV S	88-33-40.5 E	809.868	29	137864.657	404533.786	
29	INV S	88-33-40.5 E	1672.197	59	137822.671	406205.455	
59	INV S	88-14-11.2 E	2609.833	99	137742.353	408814.052	
99	INV S	1-03-47.5 E	2627.819	95	135114.987	408862.812	
95	INV S	0-57-25.9 W	2619.528	91	132495.824	408819.051	32
91	INV N	88-36-55.5 W	2622.348	51	132559.189	406197.468	31
51	INV N	88-46-24.1 W	2509.433	11	132612.909	403688.611	31
START				51	132559.189	406197.468	31
51	INV N	0-05-13.0 E	2629.254	55	135188.440	406201.458	
55	INV N	0-05-13.0 E	2634.234	59	137822.671	406205.455	
START				15	135257.132	403712.587	
15	INV S	88-25-08.6 E	2489.819	55	135188.440	406201.458	
55	INV S	88-25-08.6 E	2662.367	95	135114.987	408862.812	

POINT-POINT ANGLES

ANGLE	51 -	11 -	15:	C.W.	269-17-34.3	C.C.W.	90-42-25.7	2644.332
ANGLE	11 -	15 -	16:	C.W.	180-00-00.0	C.C.W.	180-00-00.0	396.000
ANGLE	15 -	16 -	18:	C.W.	179-40-56.9	C.C.W.	180-19-03.1	2154.161
ANGLE	16 -	18 -	19:	C.W.	180-05-38.0	C.C.W.	179-54-22.0	77.729
ANGLE	18 -	19 -	29:	C.W.	271-08-34.4	C.C.W.	88-51-25.6	809.868
ANGLE	19 -	29 -	59:	C.W.	180-00-00.0	C.C.W.	180-00-00.0	1672.197
ANGLE	29 -	59 -	99:	C.W.	180-19-29.3	C.C.W.	179-40-30.7	2609.833
ANGLE	59 -	99 -	95:	C.W.	267-10-23.7	C.C.W.	92-49-36.3	2627.819
ANGLE	99 -	95 -	91:	C.W.	182-01-13.4	C.C.W.	177-58-46.6	2619.528
ANGLE	95 -	91 -	51:	C.W.	270-25-38.6	C.C.W.	89-34-21.4	2622.348
ANGLE	91 -	51 -	11:	C.W.	179-50-31.4	C.C.W.	180-09-28.6	2509.433