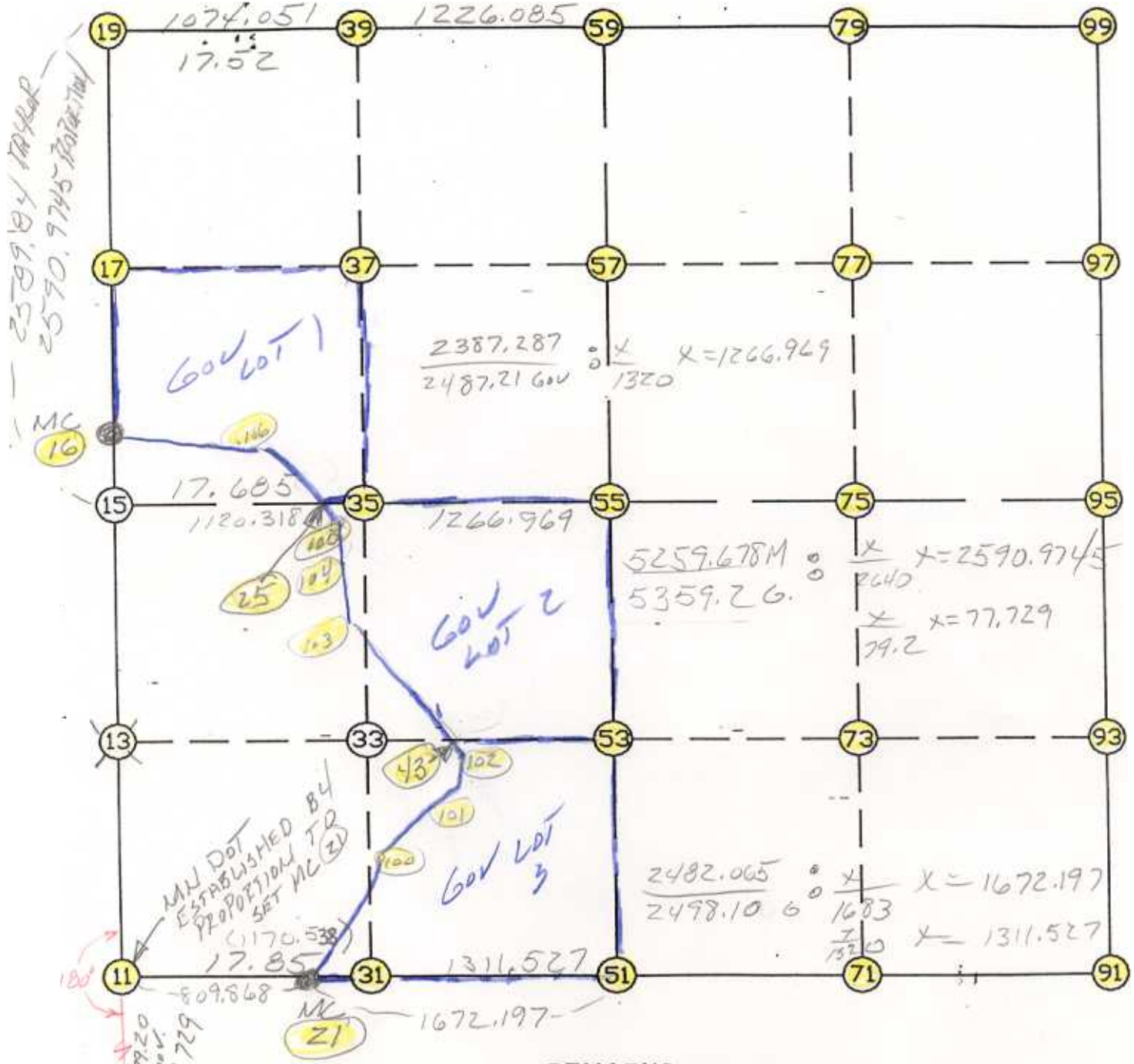


WRIGHT COUNTY SURVEYORS OFFICE

Public Works Building
Buffalo, Minn. 55313

SECTION 30 TOWNSHIP 119 RANGE 28



REMARKS

SW CORNER ASSUMED AT PROPORTIONAL
CHAINAGE MC (10) TO NW SEC COR TO AGREE WITH
MN DOT - WILL ALSO SET PROPORTIONAL

THE INFORMATION SHOWN HEREON IS A COMPILATION OF WRIGHT COUNTY RECORDS AND IS INTENDED TO BE USED FOR COMPARISON PURPOSES ONLY. THE COUNTY IS NOT RESPONSIBLE FOR ANY INACCURACIES HEREIN CONTAINED.

COGO =====

Monday February 27, 1995

11:24 AM

Coordinate File Name: SEC-30.CRD Lowest pt #: 1 Highest pt #: 113
Job # : 95-15
Description: COUNTY COORDINATES SECTION 30 T119 R28
of chars. in point descr.: 10

FROM TYPE	BEARING	DISTANCE	TO	NORTHING	EASTING
LIST POINTS					
POINT	NORTHING	EASTING	ELEVATION	DESCR	
10	137807.263176	403723.771581			
11	137884.991139	403724.172967			
13	139180.461002	403730.862762			
15	140475.930865	403737.552557			
16	140694.168455	403738.679534			
17	141771.375485	403747.980533			
19	143066.814497	403759.165826			
21	137864.656711	404533.785237			
25	140455.380650	404629.880636			
31	137855.600877	404894.341939			
35	140450.136908	404857.573580			
37	141706.258297	404842.862760			
39	142962.603867	404828.149313			
43	139144.459092	405225.130322			
51	137822.670626	406205.455054			
53	139121.818563	406164.830670			
55	140420.966500	406124.206285			
57	141632.304276	406086.327727			
59	142843.642052	406048.449168			
71	137782.511714	407509.753667			
73	139086.721671	407469.064636			
75	140390.931628	407428.375606			
77	141652.718001	407388.292369			
79	142914.504374	407348.209133			
91	137742.352801	408814.052280			
93	139051.624779	408773.298603			
95	140360.896757	408732.544926			
97	141673.131727	408690.257012			
99	142985.366697	408647.969099			
100	138421.642307	404991.484268			
101	138738.797828	405375.089351			
102	139084.830106	405267.946602			
103	139701.828027	404824.914484			
104	140254.355351	404794.509884			
105	140414.489913	404745.264169			
106	140544.503630	404378.397659			

START					10	137807.263	403723.772
	10	INV N	0-17-45.1 E	77.729	11	137884.991	403724.173
	11	INV N	0-17-45.1 E	2590.974	15	140475.931	403737.553
	15	INV N	0-17-45.1 E	218.241	16	140694.168	403738.680
	16	INV N	0-29-40.9 E	2372.734	19	143066.814	403759.166
	19	INV S	84-25-55.5 E	2300.136	59	142843.642	406048.449
	59	INV N	86-52-45.7 E	2603.380	99	142985.367	408647.969
	99	INV S	1-50-44.8 E	2625.832	95	140360.897	408732.545
	95	INV S	1-46-58.3 E	2619.812	91	137742.353	408814.052
	91	INV N	88-14-11.2 W	2609.833	51	137822.671	406205.455
	51	INV N	88-33-40.5 W	1672.197	21	137864.657	404533.785
	21	INV N	88-33-40.5 W	809.868	11	137884.991	403724.173
START					51	137822.671	406205.455
	51	INV N	1-47-27.8 W	2599.566	55	140420.966	406124.206
	55	INV N	1-47-27.8 W	2423.860	59	142843.642	406048.449
START					15	140475.931	403737.553
	15	INV S	88-40-50.6 E	2387.287	55	140420.966	406124.206
	55	INV S	88-40-50.6 E	2609.030	95	140360.897	408732.545

POINT-POINT ANGLES

ANGLE	51 -	21 -	11:	C.W.	180-00-00.0	C.C.W.	180-00-00.0	809.868
ANGLE	21 -	11 -	15:	C.W.	268-51-25.6	C.C.W.	91-08-34.4	2590.974
ANGLE	11 -	15 -	16:	C.W.	180-00-00.0	C.C.W.	180-00-00.0	218.241
ANGLE	15 -	16 -	19:	C.W.	180-11-55.8	C.C.W.	179-48-04.2	2372.734
ANGLE	16 -	19 -	59:	C.W.	275-04-23.6	C.C.W.	84-55-36.4	2300.136
ANGLE	19 -	59 -	99:	C.W.	171-18-41.1	C.C.W.	188-41-18.9	2603.380
ANGLE	59 -	99 -	95:	C.W.	271-16-29.6	C.C.W.	88-43-30.4	2625.832
ANGLE	99 -	95 -	91:	C.W.	180-03-46.4	C.C.W.	179-56-13.6	2619.812
ANGLE	95 -	91 -	51:	C.W.	273-32-47.1	C.C.W.	86-27-12.9	2609.833
ANGLE	91 -	51 -	21:	C.W.	179-40-30.7	C.C.W.	180-19-29.3	1672.197
ANGLE	51 -	21 -	11:	C.W.	180-00-00.0	C.C.W.	180-00-00.0	809.868

Coordinates stored

Monday February 27, 1995

11:26 AM