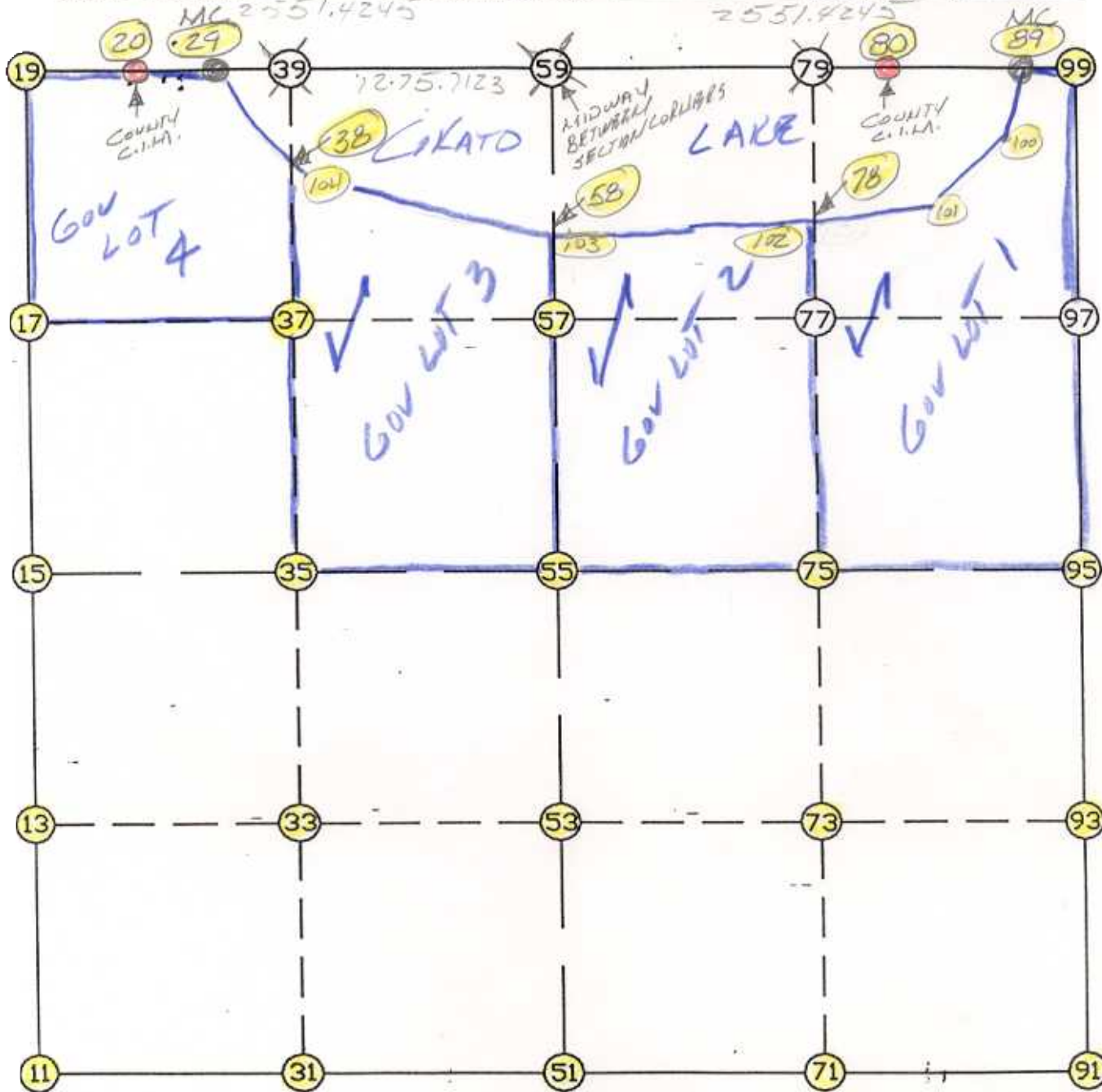


WRIGHT COUNTY SURVEYORS OFFICE

Public Works Building  
Buffalo, Minn. 55313

SECTION 23 TOWNSHIP 119 RANGE 28



REMARKS

MC 29 & 89 BY Gov PROPORTIONAL & Do NOT  
FIT LAKE

THE INFORMATION SHOWN HEREON IS A COMPILATION OF WRIGHT COUNTY RECORDS AND IS INTENDED TO BE USED FOR COMPARISON PURPOSES ONLY. THE COUNTY IS NOT RESPONSIBLE FOR ANY INACCURACIES HEREIN CONTAINED.

===== COGO =====

Saturday February 25, 1995

10:17 AM

Coordinate File Name: SEC-23.CRD    Lowest pt #:    1    Highest pt #:    104  
Job #                : 95-15  
Description: COUNTY COORDINATES SECTION 23 T119 R28  
# of chars. in point descr.: 10

-----  
FROM TYPE                BEARING    DISTANCE    TO            NORTHING        EASTING  
-----

LIST POINTS

POINT	NORTHING	EASTING	ELEVATION	DESCR
11	142618.247736	424774.876222		
13	143909.873395	424775.473073		
15	145201.499054	424776.069925		
17	146516.738709	424806.257021		
19	147831.978365	424836.444118		
20	147840.766287	425780.889739		
29	147845.193838	425990.876067		
31	142582.046519	426073.687644		
33	143900.841976	426075.876794		
35	145219.637433	426078.065944		
37	146536.474740	426095.089602		
38	147564.183925	426108.375502		
39	147847.748601	426112.041337		
51	142545.845303	427372.499066		
53	143891.810558	427376.280515		
55	145237.775813	427380.061963		
57	146556.208381	427383.766060		
58	146836.974348	427384.554863		
59	147874.640948	427387.470156		
71	142593.160937	428643.845084		
73	143924.328029	428647.910791		
75	145255.495122	428651.976497		
78	146814.553333	428658.412073		
79	147901.533296	428662.898976		
80	147912.317875	429174.381392		
89	147909.316840	429805.816196		
91	142640.476571	429915.191102		
93	143956.845501	429919.541066		
95	145273.214430	429923.891031		
99	147908.686285	429938.488697		
100	147575.278435	429766.641630		
101	147039.456918	429294.796645		
102	146784.347779	428572.942786		
103	146817.520717	427424.193349		
104	147437.243598	426161.453404		

START					11	142618.248	424774.876
11	INV N	0-01-35.3 E	2583.252	15	145201.499	424776.070	
15	INV N	1-18-53.3 E	2631.172	19	147831.978	424836.444	
19	INV N	89-28-00.8 E	944.487	20	147840.766	425780.890	
20	INV N	88-47-31.6 E	210.033	29	147845.194	425990.876	
29	INV N	88-47-31.6 E	1396.905	59	147874.641	427387.470	
59	INV N	88-47-31.6 E	1787.308	80	147912.318	429174.381	
80	INV S	89-43-39.7 E	631.442	89	147909.317	429805.816	
89	INV S	89-43-39.7 E	132.674	99	147908.686	429938.489	
99	INV S	0-19-02.5 W	2635.512	95	145273.214	429923.891	
95	INV S	0-11-21.6 W	2632.752	91	142640.477	429915.191	
91	INV S	87-52-07.0 W	2544.452	51	142545.845	427372.499	
51	INV N	88-24-12.4 W	2598.632	11	142618.248	424774.876	
START				51	142545.845	427372.499	
51	INV N	0-09-39.5 E	2691.941	55	145237.776	427380.062	
55	INV N	0-09-39.5 E	2636.876	59	147874.641	427387.470	
START				15	145201.499	424776.070	
15	INV N	89-12-06.7 E	2604.245	55	145237.776	427380.062	
55	INV N	89-12-06.7 E	2544.076	95	145273.214	429923.891	

POINT-POINT ANGLES

ANGLE	51 -	11 -	15:	C.W.	268-25-47.7	C.C.W.	91-34-12.3	2583.252
ANGLE	11 -	15 -	19:	C.W.	181-17-18.0	C.C.W.	178-42-42.0	2631.172
ANGLE	15 -	19 -	20:	C.W.	268-09-07.5	C.C.W.	91-50-52.5	944.487
ANGLE	19 -	20 -	29:	C.W.	179-19-30.8	C.C.W.	180-40-29.2	210.033
ANGLE	20 -	29 -	59:	C.W.	180-00-00.0	C.C.W.	180-00-00.0	1396.905
ANGLE	29 -	59 -	80:	C.W.	180-00-00.0	C.C.W.	180-00-00.0	1787.308
ANGLE	59 -	80 -	89:	C.W.	181-28-48.7	C.C.W.	178-31-11.3	631.442
ANGLE	80 -	89 -	99:	C.W.	180-00-00.0	C.C.W.	180-00-00.0	132.674
ANGLE	89 -	99 -	95:	C.W.	270-02-42.2	C.C.W.	89-57-17.8	2635.512
ANGLE	99 -	95 -	91:	C.W.	179-52-19.1	C.C.W.	180-07-40.9	2632.752
ANGLE	95 -	91 -	51:	C.W.	267-40-45.4	C.C.W.	92-19-14.6	2544.452
ANGLE	91 -	51 -	11:	C.W.	183-43-40.7	C.C.W.	176-16-19.3	2598.632

Coordinates stored

Saturday February 25, 1995

10:18 AM