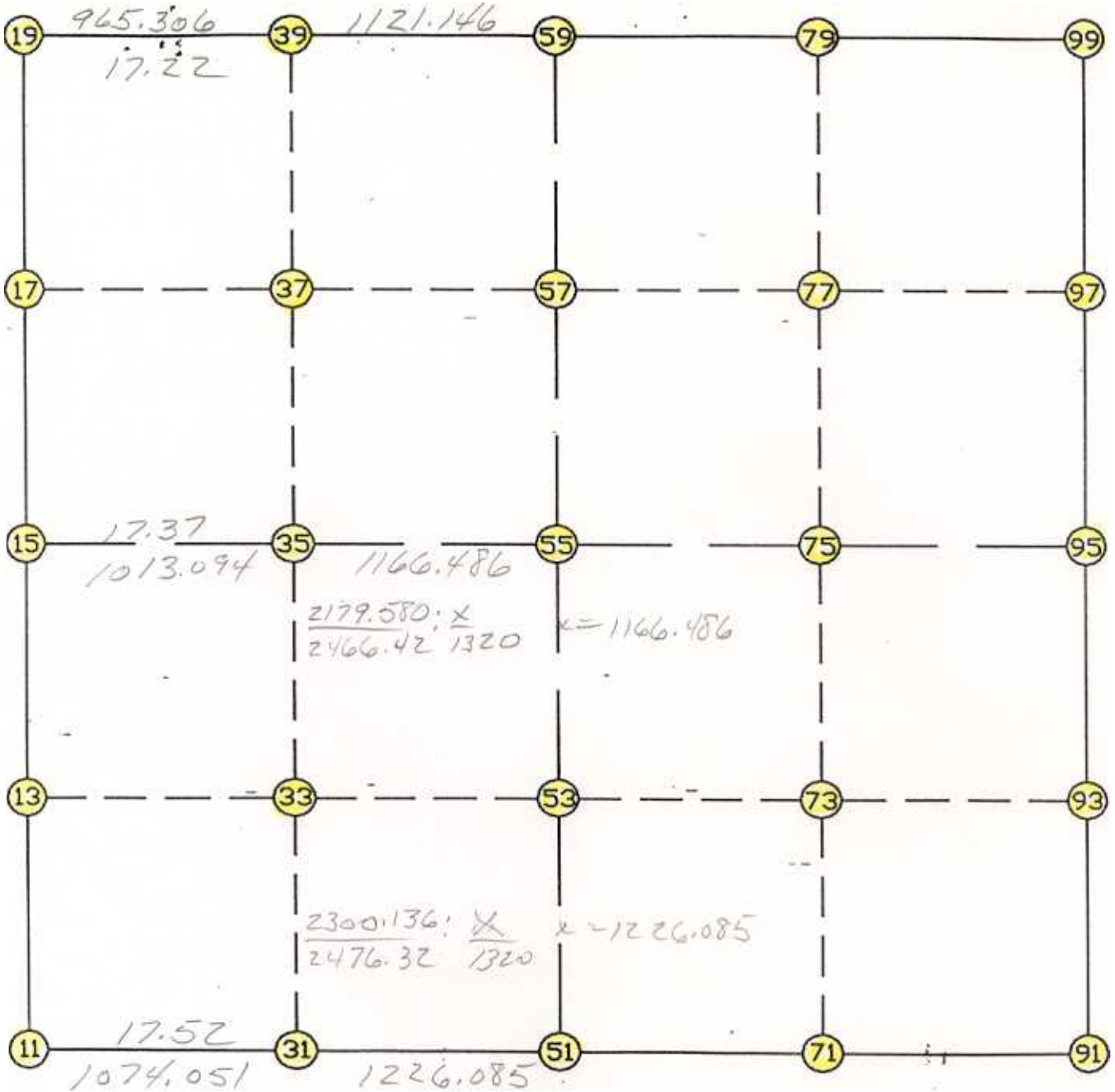


WRIGHT COUNTY SURVEYORS OFFICE

Public Works Building  
Buffalo, Minn. 55313

SECTION 19 TOWNSHIP 119 RANGE 28



REMARKS

---



---



---

THE INFORMATION SHOWN HEREON IS A COMPILATION OF WRIGHT COUNTY RECORDS AND IS INTENDED TO BE USED FOR COMPARISON PURPOSES ONLY. THE COUNTY IS NOT RESPONSIBLE FOR ANY INACCURACIES HEREIN CONTAINED.

==== COGO =====

Friday February 24, 1995

3:23 PM

Coordinate File Name: SEC-19.CRD    Lowest pt #:    1    Highest pt #:    99  
 Job #                    : 95-15  
 Description: COUNTY COORDINATES SECTION 19 T119 R28  
 # of chars. in point descr.: 10

FROM	TYPE	BEARING	DISTANCE	TO	NORTHING	EASTING
-----						
LIST POINTS						
POINT					NORTHING	EASTING
-----						
11					143066.814497	403759.165826
13					144376.161970	403771.917486
15					145685.509443	403784.669146
17					147007.109628	403798.245224
19					148328.709814	403811.821302
31					142962.603867	404828.149313
33					144315.481196	404812.880917
35					145668.166419	404797.614688
37					146953.026326	404785.239116
39					148238.063441	404772.861836
51					142843.642052	406048.449168
53					144245.919770	406006.189698
55					145648.197489	405963.930228
57					146890.490244	405926.492114
59					148132.783000	405889.054000
71					142914.504374	407348.209133
73					144270.349967	407298.597650
75					145626.195559	407248.986166
77					146902.692501	407226.620111
79					148179.189443	407204.254056
91					142985.366697	408647.969099
93					144294.780163	408591.005601
95					145604.193630	408534.042104
97					146914.894758	408526.748107
99					148225.595885	408519.454111

19

START				11	143066.814	403759.166
11	INV N	0-33-28.7 E	2618.819	15	145685.509	403784.669
15	INV N	0-35-18.8 E	2643.340	19	148328.710	403811.821
19	INV S	84-36-42.3 E	2086.452	59	148132.783	405889.054 19
59	INV N	87-58-45.0 E	2632.037	99	148225.596	408519.454
99	INV S	0-19-07.8 E	2621.443	95	145604.194	408534.042
95	INV S	2-29-27.5 E	2621.304	91	142985.367	408647.969
91	INV S	86-52-45.7 W	2603.380	51	142843.642	406048.449
51	INV N	84-25-55.5 W	2300.136	11	143066.814	403759.166
START				51	142843.642	406048.449
51	INV N	1-43-34.2 W	2805.829	55	145648.197	405963.930
55	INV N	1-43-34.2 W	2485.714	59	148132.783	405889.054 19
START				15	145685.509	403784.669
15	INV S	89-01-08.8 E	2179.580	55	145648.197	405963.930
55	INV S	89-01-08.8 E	2570.489	95	145604.194	408534.042

POINT-POINT ANGLES						
ANGLE	51	-	11	-	15:	C.W. 264-59-24.2 C.C.W. 95-00-35.8 2618.819
ANGLE	11	-	15	-	19:	C.W. 180-01-50.0 C.C.W. 179-58-10.0 2643.340
ANGLE	15	-	19	-	59:	C.W. 274-47-59.0 C.C.W. 85-12-01.0 2086.452
ANGLE	19	-	59	-	99:	C.W. 172-35-27.3 C.C.W. 187-24-32.7 2632.037
ANGLE	59	-	99	-	95:	C.W. 271-42-07.1 C.C.W. 88-17-52.9 2621.443
ANGLE	99	-	95	-	91:	C.W. 177-49-40.3 C.C.W. 182-10-19.7 2621.304
ANGLE	95	-	91	-	51:	C.W. 269-22-13.2 C.C.W. 90-37-46.8 2603.380
ANGLE	91	-	51	-	11:	C.W. 188-41-18.9 C.C.W. 171-18-41.1 2300.136

Coordinates stored

Friday February 24, 1995

3:25 PM