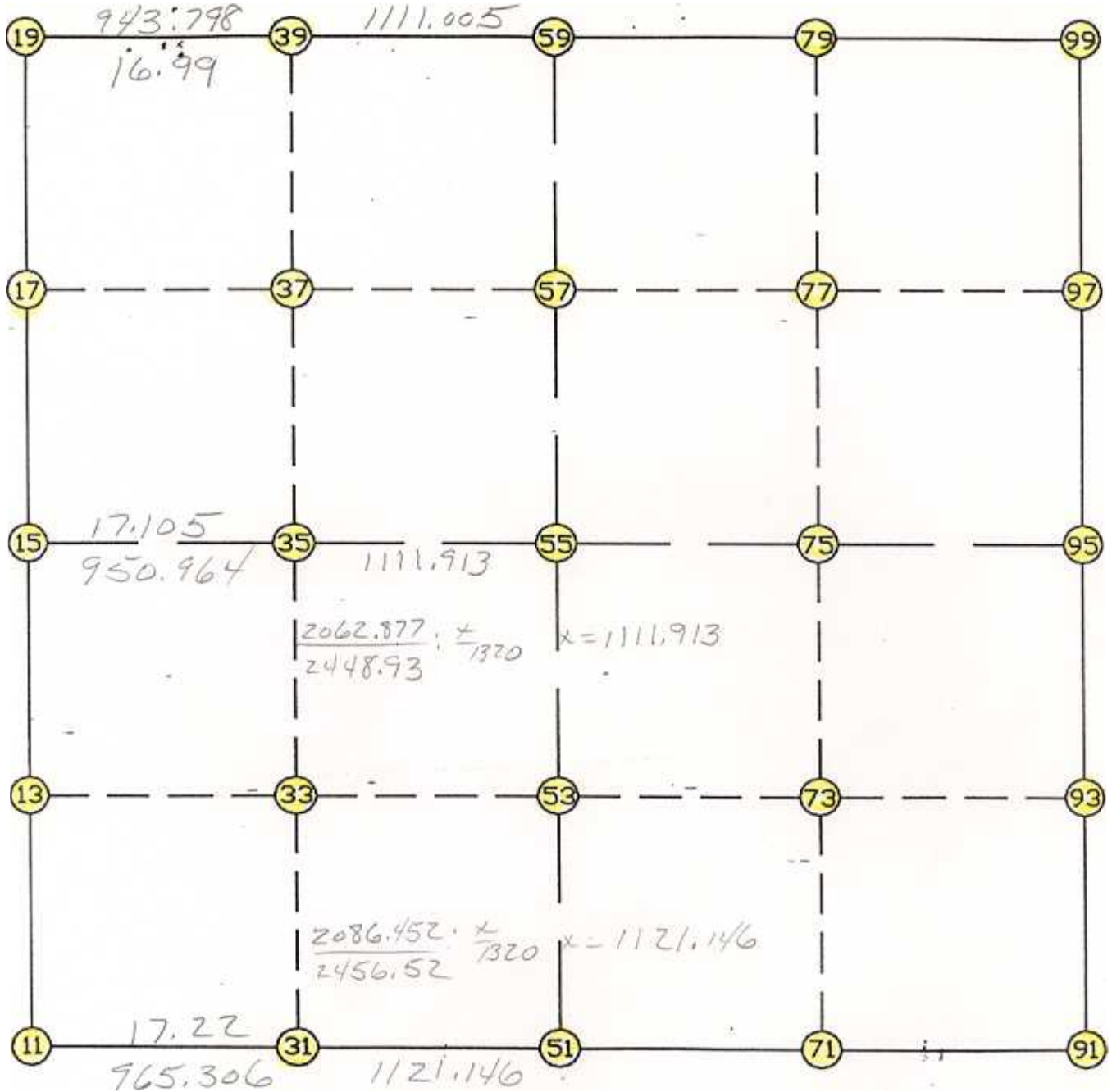


WRIGHT COUNTY SURVEYORS OFFICE

Public Works Building  
Buffalo, Minn. 55313

SECTION 18 TOWNSHIP 119 RANGE 28



REMARKS

---



---



---

THE INFORMATION SHOWN HEREON IS A COMPILATION OF WRIGHT COUNTY RECORDS AND IS INTENDED TO BE USED FOR COMPARISON PURPOSES ONLY. THE COUNTY IS NOT RESPONSIBLE FOR ANY INACCURACIES HEREIN CONTAINED.

Coordinate File Name: SEC-18.CRD    Lowest pt #:    1    Highest pt #:    99  
 Job #            : 95-15  
 Description: COUNTY COORDINATES SECTION 18 T119 R28  
 # of chars. in point descr.: 10

-----  
 FROM TYPE            BEARING    DISTANCE    TO            NORTHING            EASTING  
 -----

LIST POINTS

POINT	NORTHING	EASTING	ELEVATION	DESCR
11	148328.709814	403811.821302		
13	149652.352939	403823.411928		
15	150975.996064	403835.002554		
17	152287.388521	403843.299976		
19	153598.780977	403851.597399		
31	148238.063441	404772.861836		
33	149593.692935	404779.225781		
35	150949.208497	404785.589192		
37	152253.776478	404790.059475		
39	153558.369761	404794.529845		
51	148132.783000	405889.054000		
53	149525.335087	405893.057604		
55	150917.887174	405897.061207		
57	152214.343156	405900.788533		
59	153510.799138	405904.515859		
71	148179.189443	407204.254056		
73	149529.631191	407221.597720		
75	150880.072939	407238.941383		
77	152183.520335	407228.344914		
79	153486.967730	407217.748444		
91	148225.595885	408519.454111		
93	149533.927295	408550.137836		
95	150842.258705	408580.821560		
97	152152.697514	408555.901294		
99	153463.136322	408530.981029		

START				11	148328.710	403811.821
11	INV N	0-30-06.1 E	2647.388	15	150975.996	403835.003
15	INV N	0-21-45.1 E	2622.837	19	153598.781	403851.597
19	INV S	87-32-45.5 E	2054.803	59	153510.799	405904.516
59	INV S	88-57-37.3 E	2626.898	99	153463.136	408530.981
99	INV S	1-05-22.0 E	2621.351	95	150842.259	408580.822
95	INV S	1-20-36.6 W	2617.382	91	148225.596	408519.454
91	INV S	87-58-45.0 W	2632.037	51	148132.783	405889.054 19
51	INV N	84-36-42.3 W	2086.452	11	148328.710	403811.821
START				51	148132.783	405889.054 19
51	INV N	0-09-53.0 E	2785.116	55	150917.887	405897.061
55	INV N	0-09-53.0 E	2592.923	59	153510.799	405904.516
START				15	150975.996	403835.003
15	INV S	88-23-09.0 E	2062.877	55	150917.887	405897.061
55	INV S	88-23-09.0 E	2684.826	95	150842.259	408580.822

POINT-POINT ANGLES

ANGLE	51 -	11 -	15:	C.W.	265-06-48.4	C.C.W.	94-53-11.6	2647.388
ANGLE	11 -	15 -	19:	C.W.	179-51-38.9	C.C.W.	180-08-21.1	2622.837
ANGLE	15 -	19 -	59:	C.W.	272-05-29.4	C.C.W.	87-54-30.6	2054.803
ANGLE	19 -	59 -	99:	C.W.	178-35-08.2	C.C.W.	181-24-51.8	2626.898
ANGLE	59 -	99 -	95:	C.W.	267-52-15.3	C.C.W.	92-07-44.7	2621.351
ANGLE	99 -	95 -	91:	C.W.	182-25-58.6	C.C.W.	177-34-01.4	2617.382
ANGLE	95 -	91 -	51:	C.W.	266-38-08.5	C.C.W.	93-21-51.5	2632.037
ANGLE	91 -	51 -	11:	C.W.	187-24-32.7	C.C.W.	172-35-27.3	2086.452
ANGLE	<del>51 -</del>	<del>11 -</del>	<del>12:</del>	<del>C.W.</del>	<del>154-26-32.6</del>	<del>C.C.W.</del>	<del>205-33-27.4</del>	<del>430192.275</del>

Coordinates stored            Friday February 24, 1995            2:43 PM