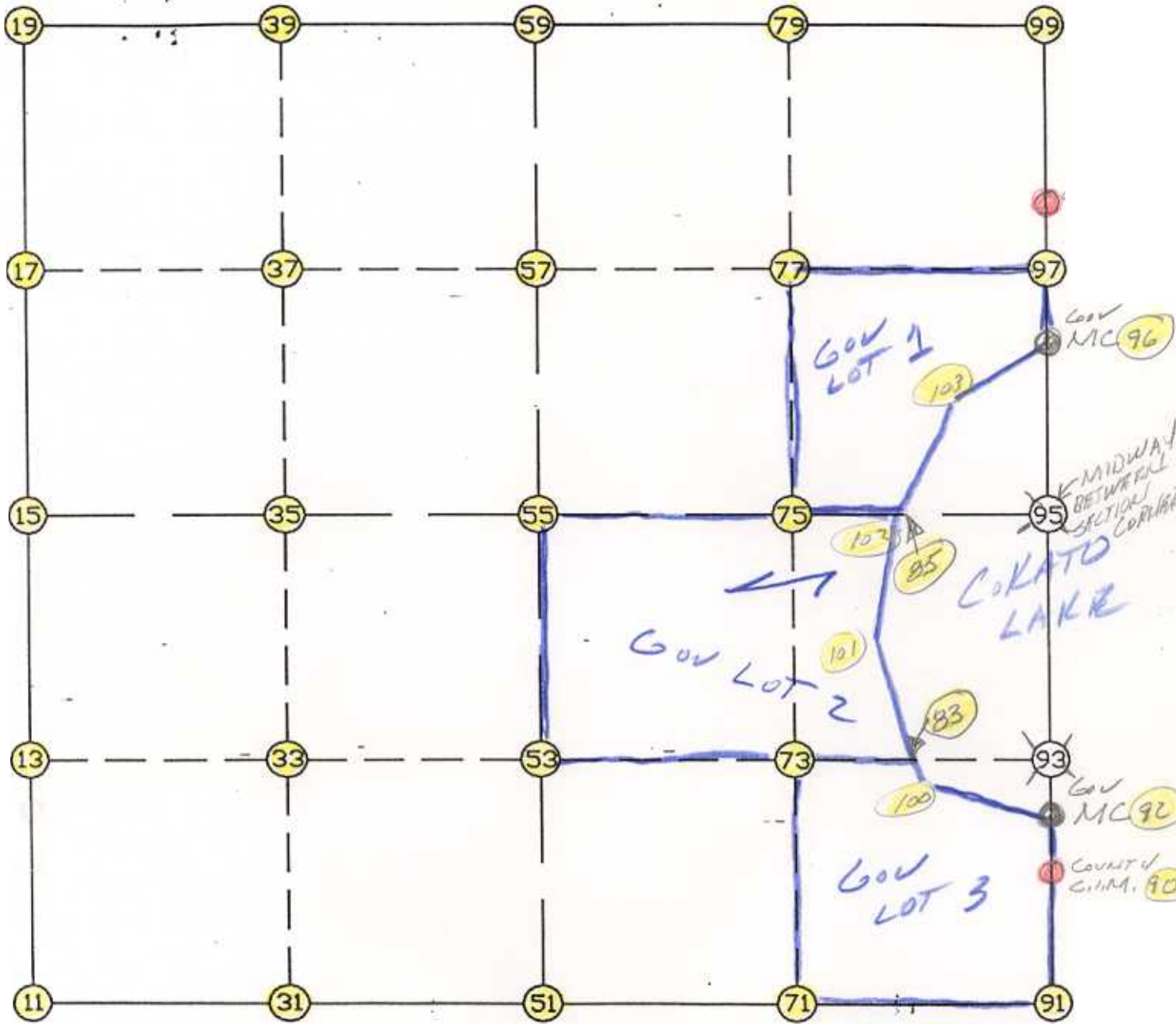


WRIGHT COUNTY SURVEYORS OFFICE

Public Works Building  
Buffalo, Minn. 55313

SECTION 15 TOWNSHIP 119 RANGE 28



REMARKS

---

---

---

THE INFORMATION SHOWN HEREON IS A COMPILATION OF WRIGHT COUNTY RECORDS AND IS INTENDED TO BE USED FOR COMPARISON PURPOSES ONLY. THE COUNTY IS NOT RESPONSIBLE FOR ANY INACCURACIES HEREIN CONTAINED.

===== COGO =====

Friday February 24, 1995

1:08 PM

Coordinate File Name: SEC-15.CRD    Lowest pt #:    1    Highest pt #:    103  
Job #                : 95-15  
Description: COUNTY COORDINATES SECTION 15 T119 R28  
# of chars. in point descr.: 10

FROM TYPE	BEARING	DISTANCE	TO	NORTHING	EASTING
-----					
LIST POINTS					
POINT	NORTHING	EASTING	ELEVATION	DESCR	
-----					
11	147981.133000	419594.130000		<del>22</del>	
13	149288.586491	419604.196405			
15	150596.039982	419614.262809			
17	151907.351004	419636.066512			
19	153218.662025	419657.870215			
31	147921.482982	420901.898658			
33	149243.794000	420915.440804			
35	150566.105019	420928.982950			
37	151880.167766	420948.264245			
39	153194.209162	420967.545227			
51	147861.832963	422209.667315			
53	149199.001509	422226.685203			
55	150536.170055	422243.703091			
57	151852.963177	422260.461665			
59	153169.756299	422277.220239			
71	147846.905664	423523.055716			
73	149176.608133	423539.099993			
75	150506.309751	423555.144259			
77	151825.822741	423571.108828			
79	153145.337558	423587.073420			
83	149163.576186	424302.866903			
85	150489.069015	424312.343871			
90	148832.008076	424848.000404			
91	147831.978365	424836.444118			
92	148833.570365	424848.018060			
93	149154.212588	424851.641870			
95	150476.449447	424866.585426			
96	151130.956648	424873.982486			
97	151798.687005	424881.528990			
98	152112.321976	424885.073606			
99	153120.918817	424896.926601			
100	149091.057874	424322.018176			
101	149790.959348	424137.182051			
102	150377.748619	424242.438466			
103	150829.385968	424526.051290			

START					11	147981.133	419594.130	22
	11	INV N	0-26-28.1 E	2614.984	15	150596.040	419614.263	
	15	INV N	0-57-09.3 E	2622.985	19	153218.662	419657.870	
	19	INV S	88-55-49.3 E	2619.807	59	153169.756	422277.220	
	59	INV S	88-55-55.2 E	2620.162	99	153120.919	424896.927	
	99	INV S	0-40-23.9 W	1008.666	98	152112.322	424885.074	
	98	INV S	0-38-51.0 W	981.428	96	151130.957	424873.982	
	96	INV S	0-38-51.0 W	654.549	95	150476.449	424866.585	
	95	INV S	0-38-51.0 W	1642.984	92	148833.570	424848.018	
	92	INV S	0-38-51.0 W	1.562	90	148832.008	424848.000	
	90	INV S	0-39-43.5 W	1000.096	91	147831.978	424836.444	
	91	INV N	89-20-55.8 W	2626.946	51	147861.833	422209.667	
	51	INV N	87-23-18.4 W	2618.257	11	147981.133	419594.130	22
START					51	147861.833	422209.667	
	51	INV N	0-43-45.0 E	2674.554	55	150536.170	422243.703	
	55	INV N	0-43-45.0 E	2633.800	59	153169.756	422277.220	
START					15	150596.040	419614.263	
	15	INV S	88-41-44.4 E	2630.122	55	150536.170	422243.703	
	55	INV S	88-41-44.4 E	2623.562	95	150476.449	424866.585	
POINT-POINT ANGLES								
ANGLE	51	-	11	-	15:	C.W. 267-49-46.4	C.C.W. 92-10-13.6	2614.984
ANGLE	11	-	15	-	19:	C.W. 180-30-41.3	C.C.W. 179-29-18.7	2622.985
ANGLE	15	-	19	-	59:	C.W. 270-07-01.4	C.C.W. 89-52-58.6	2619.807
ANGLE	19	-	59	-	99:	C.W. 179-59-54.1	C.C.W. 180-00-05.9	2620.162
ANGLE	59	-	99	-	98:	C.W. 269-36-19.1	C.C.W. 90-23-40.9	1008.666
ANGLE	99	-	98	-	96:	C.W. 179-58-27.1	C.C.W. 180-01-32.9	981.428
ANGLE	98	-	96	-	95:	C.W. 180-00-00.0	C.C.W. 180-00-00.0	654.549
ANGLE	96	-	95	-	92:	C.W. 180-00-00.0	C.C.W. 180-00-00.0	1642.984
ANGLE	95	-	92	-	90:	C.W. 180-00-00.0	C.C.W. 180-00-00.0	1.562
ANGLE	92	-	90	-	91:	C.W. 180-00-52.5	C.C.W. 179-59-07.5	1000.096
ANGLE	90	-	91	-	51:	C.W. 269-59-20.7	C.C.W. 90-00-39.3	2626.946
ANGLE	91	-	51	-	11:	C.W. 181-57-37.4	C.C.W. 178-02-22.6	2618.257

Coordinates stored

Friday February 24, 1995

1:10 PM