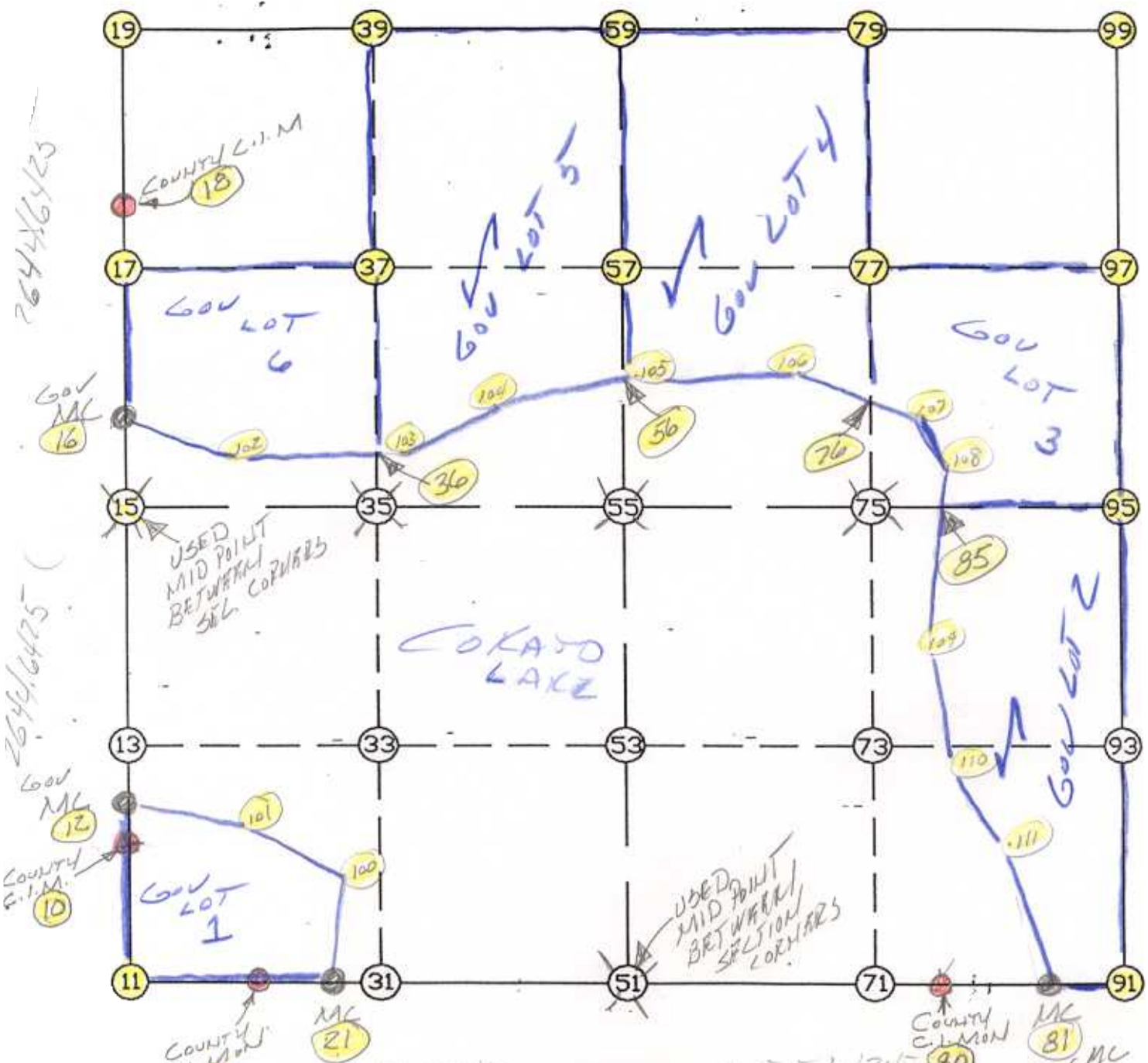


WRIGHT COUNTY SURVEYORS OFFICE

Public Works Building
Buffalo, Minn. 55313

SECTION 14 TOWNSHIP 119 RANGE 28



REMARKS 2551.4245 2551.4245
NOTE: Gov MEANDER CORNERS SET IN PROPORTION
TO Gov CHAINAGE WHICH DOES NOT AGREE WITH
COUNTY RECORDS OR LAKE?

THE INFORMATION SHOWN HEREON IS A COMPILATION OF WRIGHT COUNTY RECORDS AND IS INTENDED TO BE USED FOR COMPARISON PURPOSES ONLY. THE COUNTY IS NOT RESPONSIBLE FOR ANY INACCURACIES HEREIN CONTAINED.

===== COGO =====

Friday February 24, 1995

12:43 PM

Coordinate File Name: SEC-14.CRD Lowest pt #: 1 Highest pt #: 111

Job # : 95-15

Description: COUNTY COORDINATES SECTION 14 T119 R28

of chars. in point descr.: 10

FROM TYPE	BEARING	DISTANCE	TO	NORTHING	EASTING
-----------	---------	----------	----	----------	---------

LIST POINTS

POINT	NORTHING	EASTING	ELEVATION	DESCR
10	148832.008076	424848.000404		
11	147831.978365	424836.444118		
12	148833.570365	424848.018060		
15	150476.449558	424866.585428		
16	151130.956648	424873.982486		
17	151798.686705	424881.528987		
18	152112.321976	424885.073606		
19	153120.918817	424896.926601		
20	147840.766287	425780.889739		
21	147845.193838	425990.876067		
35	150493.532654	426128.894265		
36	150759.100587	426130.611410		
37	151810.240917	426137.408013		
39	153126.944572	426145.921731		
51	147874.640946	427387.470056		
55	150510.615750	427391.203103		
56	151232.108513	427392.224875		
57	151821.793039	427393.059982		
59	153132.970328	427394.916861		
75	150528.318788	428699.320808		
76	151147.096761	428702.296342		
77	151836.417035	428705.611095		
79	153144.515283	428711.901383		
80	147912.317875	429174.381392		
81	147909.316840	429805.816196		
85	150535.184995	429206.680495		
91	147908.686285	429938.488697		
95	150546.021825	430007.438513		
97	151851.041031	430018.162209		
99	153156.060238	430028.885905		
100	148426.538420	426061.987335		
101	148742.388321	425509.604916		
102	150768.214859	425476.378304		
103	150757.485345	426246.555386		
104	151104.787971	426754.805189		
105	151256.142293	427512.547991		
106	151299.639662	428282.289012		
107	151026.201389	429035.166257		
108	150703.639659	429235.635147		
109	149539.790126	429035.588100		
110	148922.048320	429042.390760		
111	148548.134991	429283.738107		

START					11	147831.978	424836.444
11	INV N	0-39-43.5 E	1000.096	10	148832.008	424848.000	
10	INV N	0-38-51.0 E	1.562	12	148833.570	424848.018	
12	INV N	0-38-51.0 E	1642.984	15	150476.450	424866.585	
15	INV N	0-38-51.0 E	654.549	16	151130.957	424873.982	
16	INV N	0-38-51.0 E	981.428	18	152112.322	424885.074	
18	INV N	0-40-23.9 E	1008.666	19	153120.919	424896.927	
19	INV N	89-43-24.9 E	2498.019	59	153132.970	427394.917	
59	INV N	89-29-51.9 E	2634.070	99	153156.060	430028.886	
99	INV S	0-28-14.9 W	2610.127	95	150546.022	430007.439	
95	INV S	1-29-51.3 W	2638.237	91	147908.686	429938.489	
91	INV N	89-43-39.7 W	132.674	81	147909.317	429805.816	
81	INV N	89-43-39.7 W	631.442	80	147912.318	429174.381	
80	INV S	88-47-31.6 W	3184.213	21	147845.194	425990.876	
21	INV S	88-47-31.6 W	210.033	20	147840.766	425780.890	
20	INV S	89-28-00.8 W	944.487	11	147831.978	424836.444	
11	INV N	89-28-00.8 E	944.487	20	147840.766	425780.890	
20	INV N	88-47-31.6 E	1606.937	51	147874.641	427387.470	
51	INV N	0-04-52.1 E	2635.977	55	150510.616	427391.203	
55	INV N	0-04-52.1 E	2622.357	59	153132.970	427394.917	
START				15	150476.450	424866.585	
15	INV N	89-13-28.7 E	2524.849	55	150510.616	427391.203	
55	INV N	89-13-28.7 E	2616.475	95	150546.022	430007.439	

POINT-POINT ANGLES

ANGLE	51 -	21 -	20:	C.W.	180-00-00.0	C.C.W.	180-00-00.0	210.033
ANGLE	21 -	20 -	11:	C.W.	180-40-29.2	C.C.W.	179-19-30.8	944.487
ANGLE	20 -	11 -	10:	C.W.	271-11-42.7	C.C.W.	88-48-17.3	1000.096
ANGLE	11 -	10 -	12:	C.W.	179-59-07.5	C.C.W.	180-00-52.5	1.562
ANGLE	10 -	12 -	15:	C.W.	180-00-00.0	C.C.W.	180-00-00.0	1642.984
ANGLE	12 -	15 -	16:	C.W.	180-00-00.0	C.C.W.	180-00-00.0	654.549
ANGLE	15 -	16 -	18:	C.W.	180-00-00.0	C.C.W.	180-00-00.0	981.428
ANGLE	16 -	18 -	19:	C.W.	180-01-32.9	C.C.W.	179-58-27.1	1008.666
ANGLE	18 -	19 -	59:	C.W.	269-03-01.0	C.C.W.	90-56-59.0	2498.019
ANGLE	19 -	59 -	99:	C.W.	179-46-27.0	C.C.W.	180-13-33.0	2634.070
ANGLE	59 -	99 -	95:	C.W.	270-58-23.0	C.C.W.	89-01-37.0	2610.127
ANGLE	99 -	95 -	91:	C.W.	181-01-36.4	C.C.W.	178-58-23.6	2638.237
ANGLE	95 -	91 -	81:	C.W.	268-46-29.0	C.C.W.	91-13-31.0	132.674
ANGLE	91 -	81 -	80:	C.W.	180-00-00.0	C.C.W.	180-00-00.0	631.442
ANGLE	81 -	80 -	51:	C.W.	178-31-11.3	C.C.W.	181-28-48.7	1787.308
ANGLE	80 -	51 -	21:	C.W.	180-00-00.0	C.C.W.	180-00-00.0	1396.904
ANGLE	51 -	21 -	20:	C.W.	180-00-00.0	C.C.W.	180-00-00.0	210.033

Coordinates stored

Friday February 24, 1995

12:44 PM