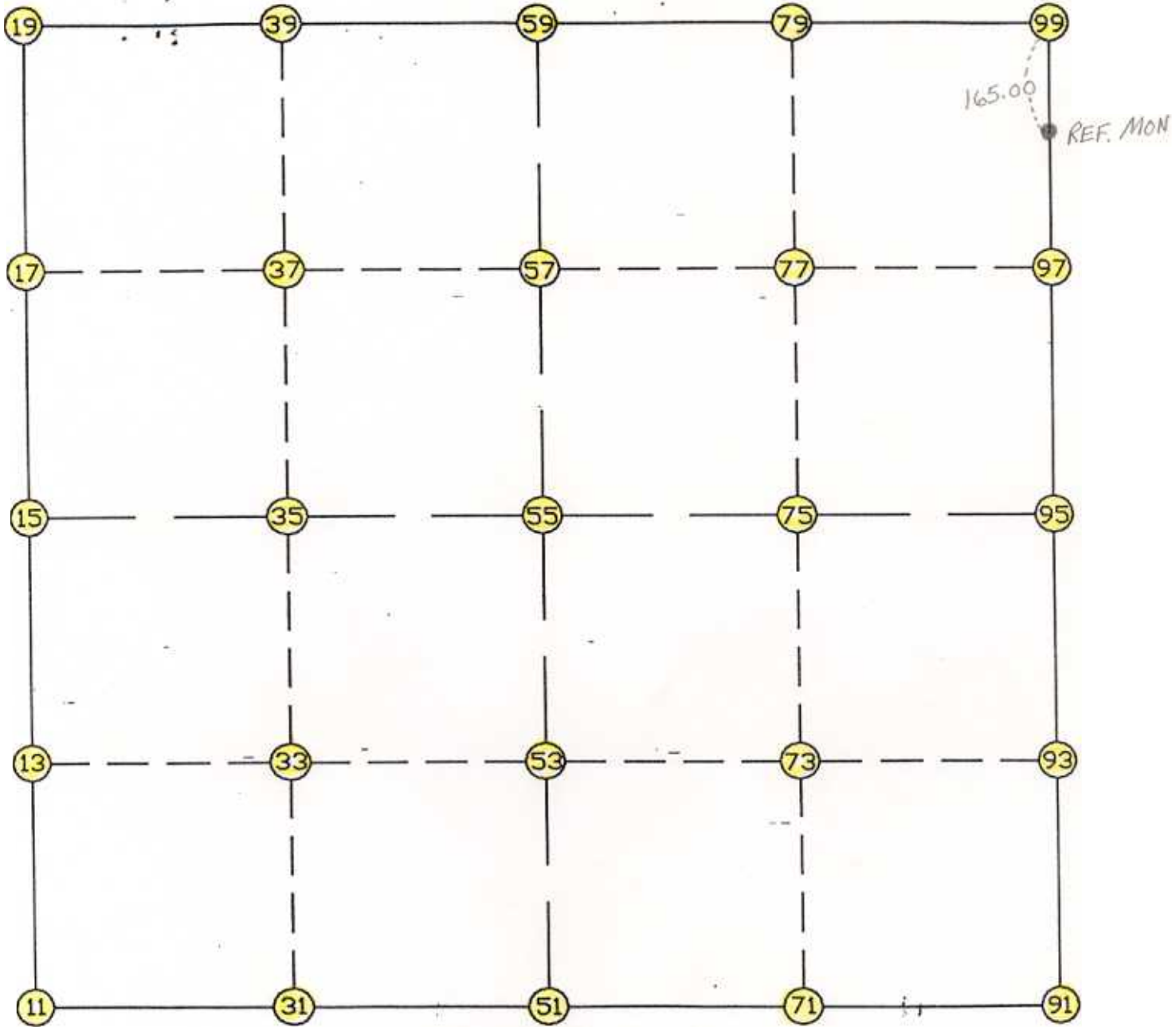


WRIGHT COUNTY SURVEYORS OFFICE

Public Works Building
Buffalo, Minn. 55313

SECTION 10 TOWNSHIP 119 RANGE 28



REMARKS

THE INFORMATION SHOWN HEREON IS A COMPILATION OF WRIGHT COUNTY RECORDS AND IS INTENDED TO BE USED FOR COMPARISON PURPOSES ONLY. THE COUNTY IS NOT RESPONSIBLE FOR ANY INACCURACIES HEREIN CONTAINED.

==== COGO ==== Friday February 24, 1995 9:32 AM

Coordinate File Name: SEC-10.CRD Lowest pt #: 1 Highest pt #: 99
Job # : 95-15
Description: COUNTY COORDINATES SECTION 10 T119 R28
of chars. in point descr.: 10

FROM TYPE BEARING DISTANCE TO NORTHING EASTING

LIST POINTS
POINT NORTHING EASTING ELEVATION DESCR

11	153218.662025	419657.870215		
13	154561.509914	419613.643281		
15	155904.357802	419569.416347		
17	157246.816146	419526.598629		
19	158589.274489	419483.780912		
31	153194.209162	420967.545227		
33	154530.812393	420952.747203		
35	155867.415623	420937.949178		
37	157203.936641	420923.857000		
39	158540.457658	420909.764822		
51	153169.756299	422277.220239		
53	154500.114871	422291.851125		
55	155830.473444	422306.482010		
57	157161.057136	422321.115372		
59	158491.640827	422335.748733		
71	153145.337558	423587.073420		
73	154469.500603	423628.592034		
75	155793.663649	423670.110648		
77	157118.390876	423711.659156		
79	158443.118102	423753.207665		
91	153120.918817	424896.926601		
93	154438.886335	424965.332943		
95	155756.853854	425033.739285		
97	157075.724616	425102.202941		
99	158394.595377	425170.666597		

START					11	153218.662	419657.870
	11	INV N	1-53-10.9 W	2687.152	15	155904.358	419569.416
	15	INV N	1-49-36.6 W	2686.282	19	158589.274	419483.781
	19	INV S	88-02-21.5 E	2853.639	59	158491.641	422335.749
	59	INV S	88-02-21.9 E	2836.578	99	158394.595	425170.667
	99	INV S	2-58-17.8 W	2641.293	95	155756.854	425033.739
	95	INV S	2-58-16.1 W	2639.483	91	153120.919	424896.927
	91	INV N	88-55-55.2 W	2620.162	51	153169.756	422277.220
	51	INV N	88-55-49.3 W	2619.807	11	153218.662	419657.870
START					51	153169.756	422277.220
	51	INV N	0-37-48.3 E	2660.878	55	155830.473	422306.482
	55	INV N	0-37-48.3 E	2661.328	59	158491.641	422335.749
START					15	155904.358	419569.416
	15	INV S	88-27-13.4 E	2738.063	55	155830.473	422306.482
	55	INV S	88-27-13.4 E	2728.251	95	155756.854	425033.739
POINT-POINT ANGLES							
ANGLE	51	-	11	-	15:	C.W. 267-02-38.4	C.C.W. 92-57-21.6 2687.152
ANGLE	11	-	15	-	19:	C.W. 180-03-34.3	C.C.W. 179-56-25.7 2686.282
ANGLE	15	-	19	-	59:	C.W. 273-47-15.1	C.C.W. 86-12-44.9 2853.639
ANGLE	19	-	59	-	99:	C.W. 179-59-59.7	C.C.W. 180-00-00.3 2836.578
ANGLE	59	-	99	-	95:	C.W. 271-00-39.6	C.C.W. 88-59-20.4 2641.293
ANGLE	99	-	95	-	91:	C.W. 179-59-58.4	C.C.W. 180-00-01.6 2639.483
ANGLE	95	-	91	-	51:	C.W. 268-05-48.7	C.C.W. 91-54-11.3 2620.162
ANGLE	91	-	51	-	11:	C.W. 180-00-05.9	C.C.W. 179-59-54.1 2619.807

Coordinates stored

Friday February 24, 1995

9:33 AM