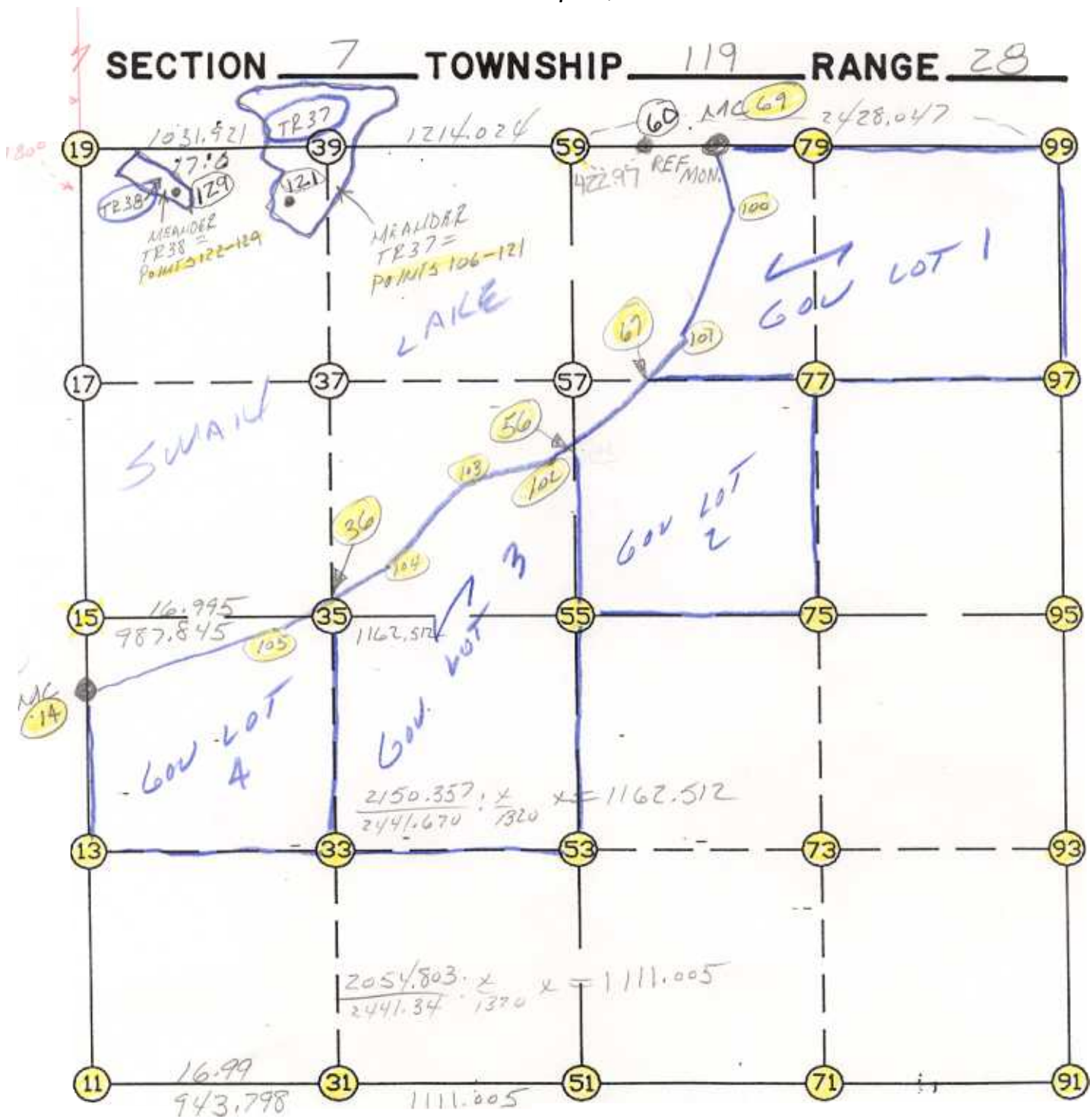


WRIGHT COUNTY SURVEYORS OFFICE

Public Works Building  
Buffalo, Minn. 55313

SECTION 7 TOWNSHIP 119 RANGE 28



REMARKS

POSITION FOR WILD MIDWAY BETWEEN SEC CORNERS  
POSITION FOR WILD SAME AS SEC 6-GOV PROPORTION

THE INFORMATION SHOWN HEREON IS A COMPILATION OF WRIGHT COUNTY RECORDS AND IS INTENDED TO BE USED FOR COMPARISON PURPOSES ONLY. THE COUNTY IS NOT RESPONSIBLE FOR ANY INACCURACIES HEREIN CONTAINED.

FROM TYPE	BEARING	DISTANCE	TO	NORTHING	EASTING
LIST POINTS					
POINT	NORTHING	EASTING	ELEVATION	DESCR	
11	153598.780977	403851.597399			
13	154910.239703	403858.614814			
14	156123.499144	403865.106779			
15	156221.698694	403865.640367			
19	158844.614973	403879.892545			
31	153558.369761	404794.529845			
33	154876.304766	404823.816756			
35	156194.241229	404853.103699			
36	156250.486400	404854.354779			
39	158826.560753	404911.655266			
51	153510.799138	405904.515859			
53	154836.363994	405959.840997			
55	156161.928849	406015.166134			
56	157013.050877	406050.689438			
57	157483.624674	406070.329789			
59	158805.320499	406125.493445			
67	157474.528012	406470.676354			
69	158793.440049	406804.436508			
71	153486.967730	407217.748444			
73	154807.109371	407240.023433			
75	156127.251013	407262.298422			
77	157455.665633	407300.814773			
79	158784.080253	407339.331124			
91	153463.136322	408530.981029			
93	154777.854749	408520.205869			
95	156092.573176	408509.430710			
97	157427.706592	408531.299756			
99	158762.840008	408553.168802			
100	158377.142798	406858.495200			
101	157580.909213	406567.493095			
102	156953.006749	405996.043722			
103	156764.543098	405565.553826			
104	156351.115346	405108.929896			
105	156190.702470	404703.111011			
106	158872.083584	404574.656979			
107	158916.559656	404488.423855			
108	159033.871026	404474.815531			
109	159168.031710	404530.203723			
110	159311.387619	404518.459201			
111	159520.742185	404419.346737			
112	159645.804684	404519.660293			
113	159645.061003	404802.764633			
114	159597.747949	404938.626907			
115	159458.348856	405147.116765			
116	159371.369816	405247.291333			
117	159106.792989	405275.019900			
118	159028.982009	405176.612152			
119	158825.769949	405152.379828			
120	158296.366517	404788.757537			
121	158586.686000	404432.778000		<i>POB TR<sup>37</sup> AMC, DNR MON. ON ISLAND</i>	
122	158619.249253	404308.729321			
123	158641.160998	404192.020911			
124	158701.642083	404068.836498			
125	158795.968218	404005.730835			
126	158833.520807	403985.043494			
127	158842.902401	404032.351879			
128	158805.651678	404128.390324			
129	158752.630000	404256.502000		<i>POB TR<sup>38</sup> AMC, DNR MON. ON ISLAND</i>	
POINT	NORTHING	EASTING	ELEVATION	DESCR	
130	160333.118202	403887.980646			

START					11	153598.781	403851.597
11	INV N	0-18-23.7 E	2524.754		14	156123.499	403865.107
14	INV N	0-18-40.8 E	2721.156		19	158844.615	403879.893
19	INV S	88-59-51.1 E	2924.992		69	158793.440	406804.437
69	INV S	88-59-51.1 E	1749.000		99	158762.840	408553.169
99	INV S	0-56-18.2 W	2670.625		95	156092.573	408509.431
95	INV S	0-28-10.5 E	2629.525		91	153463.136	408530.981
91	INV N	88-57-37.3 W	2626.898		51	153510.799	405904.516
51	INV N	87-32-45.5 W	2054.803		11	153598.781	403851.597

START					51	153510.799	405904.516
51	INV N	2-23-23.9 E	2653.438		55	156161.929	406015.166
55	INV N	2-23-23.9 E	2645.693		59	158805.320	406125.493

START					15	156221.699	403865.640
15	INV S	88-24-26.1 E	2150.357		55	156161.929	406015.166
55	INV S	88-24-26.1 E	2495.229		95	156092.573	408509.431

START					14	156123.499	403865.107
14	INV N	0-18-40.8 E	98.201		15	156221.699	403865.640
15	INV N	0-18-40.8 E	2622.955		19	158844.615	403879.893

POINT-POINT ANGLES

ANGLE	51 -	11 -	14:	C.W.	267-51-09.2	C.C.W.	92-08-50.8	2524.754
ANGLE	11 -	14 -	15:	C.W.	180-00-17.1	C.C.W.	179-59-42.9	98.201
ANGLE	14 -	15 -	19:	C.W.	180-00-00.0	C.C.W.	180-00-00.0	2622.955
ANGLE	15 -	19 -	59:	C.W.	270-41-28.2	C.C.W.	89-18-31.8	2245.945
ANGLE	19 -	59 -	69:	C.W.	180-00-00.0	C.C.W.	180-00-00.0	679.047
ANGLE	59 -	69 -	99:	C.W.	180-00-00.0	C.C.W.	180-00-00.0	1749.000
ANGLE	69 -	99 -	95:	C.W.	269-56-09.3	C.C.W.	90-03-50.7	2670.625
ANGLE	99 -	95 -	91:	C.W.	178-35-31.3	C.C.W.	181-24-28.7	2629.525
ANGLE	95 -	91 -	51:	C.W.	271-30-33.2	C.C.W.	88-29-26.8	2626.898
ANGLE	91 -	51 -	11:	C.W.	181-24-51.8	C.C.W.	178-35-08.2	2054.803

Coordinates stored

Friday February 24, 1995

8:11 AM