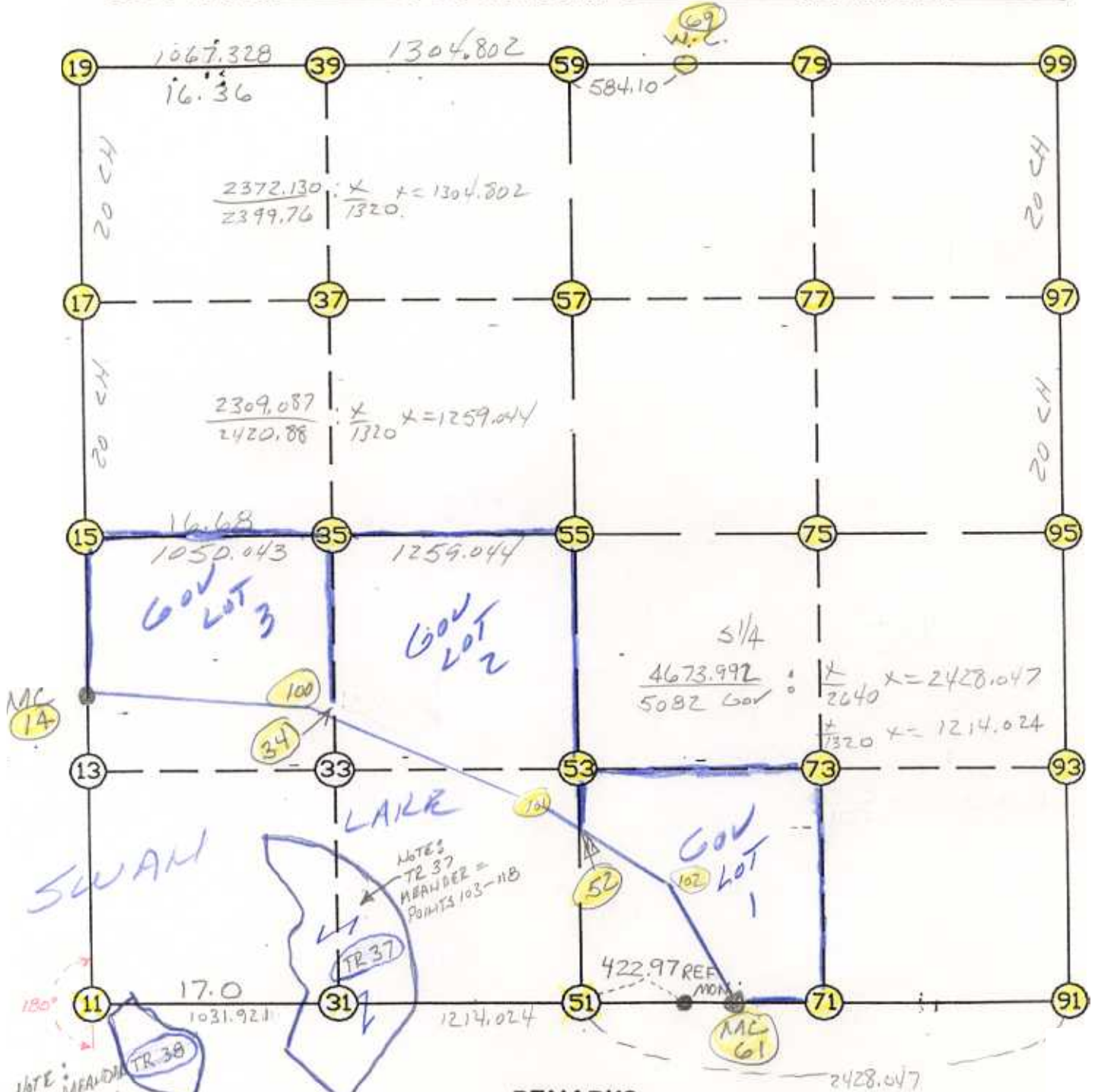


WRIGHT COUNTY SURVEYORS OFFICE
 Public Works Building
 Buffalo, Minn. 55313

SECTION 6 TOWNSHIP 119 RANGE 28



REMARKS

S/4 GET IN PROPORTION TO GOV CHALLENGE
NOTE: TR 37 & TR 38 BLM RESURVEY OF ISLANDS

THE INFORMATION SHOWN HEREON IS A COMPILATION OF WRIGHT COUNTY RECORDS AND IS INTENDED TO BE USED FOR COMPARISON PURPOSES ONLY. THE COUNTY IS NOT RESPONSIBLE FOR ANY INACCURACIES HEREIN CONTAINED.

Coordinate File Name: SEC-06.CRD Lowest pt #: 1 Highest pt #: 127
 Job # : 95-15
 Description: COUNTY COORDINATES SECTION 6 T119 R28
 # of chars. in point descr.: 10

 FROM TYPE BEARING DISTANCE TO NORTHING EASTING

LIST POINTS				
POINT	NORTHING	EASTING	ELEVATION	DESCR
11	158844.614973	403879.892545		
14	160333.118202	403887.980646		
15	161467.565493	403893.980966		
17	162779.022747	403901.093983		
19	164090.480000	403908.207000		
31	158826.560718	404911.655265		
34	160210.998753	404928.664537		
35	161453.707371	404943.932515		
37	162767.235680	404959.711679		
39	164080.741118	404975.490568		
51	158805.320475	406125.493444		
52	159620.076710	406149.446937		
53	160121.205702	406164.179919		
55	161437.090929	406202.866394		
57	162752.963159	406241.552487		
59	164068.835390	406280.238580		
61	158793.440049	406804.436508		
69	164063.505744	406864.314264		
71	158784.080241	407339.331123		
73	160102.275320	407400.720573		
75	161420.470398	407462.110023		
77	162738.690972	407523.547462		
79	164056.916773	407584.985144		
91	158762.840008	408553.168802		
93	160083.344937	408637.261227		
95	161403.849867	408721.353651		
97	162724.418782	408805.542700		
99	164044.987697	408889.731749		
100	160235.523842	404871.766221		
101	159805.747712	405868.848784		
102	159404.493824	406475.249883		
103	158872.083584	404574.656979		
104	158916.559656	404488.423855		
105	159033.871026	404474.815531		
106	159168.031710	404530.203723		
107	159311.387619	404518.459201		
108	159520.742185	404419.346737		
109	159645.804684	404519.660293		
110	159645.061003	404802.764633		
111	159597.747949	404938.626907		
112	159458.348856	405147.116765		
113	159371.369816	405247.291333		
114	159106.792989	405275.019900		
115	159028.982009	405176.612152		
116	158825.769949	405152.379828		
117	158296.366517	404788.757537		
118	158586.686000	404432.778000		
119	158619.249253	404308.729321		
120	158641.160998	404192.020911		
121	158701.642083	404068.836498		
122	158795.968218	404005.730835		
123	158833.520807	403985.043494		
124	158842.902401	404032.351879		
125	158805.651678	404128.390324		
126	158752.630000	404256.502000		
127	156123.499144	403865.106779		

START					11	158844.615	403879.893
11	INV	N	0-18-40.8 E	1488.525	14	160333.118	403887.981
14	INV	N	0-18-11.0 E	1134.463	15	161467.565	403893.981
15	INV	N	0-18-38.7 E	2622.953	19	164090.480	403908.207
19	INV	S	89-28-37.9 E	2372.130	59	164068.835	406280.239
59	INV	S	89-28-37.9 E	584.100	69	164063.506	406864.314
69	INV	S	89-28-34.2 E	2025.502	99	164044.988	408889.732
99	INV	S	3-38-52.0 W	2646.500	95	161403.850	408721.354
95	INV	S	3-38-37.6 W	2646.360	91	158762.840	408553.169
91	INV	N	88-59-51.1 W	2428.047	51	158805.320	406125.493
51	INV	N	88-59-51.1 W	2245.945	11	158844.615	403879.893
START					51	158805.320	406125.493
51	INV	N	1-41-02.4 E	2632.908	55	161437.091	406202.866
55	INV	N	1-41-02.4 E	2632.882	59	164068.835	406280.239
START					15	161467.565	403893.981
15	INV	S	89-14-37.7 E	2309.087	55	161437.091	406202.866
55	INV	S	89-14-37.7 E	2518.707	95	161403.850	408721.354

POINT-POINT ANGLES

ANGLE	51 -	11 -	14:	C.W.	269-18-31.8	C.C.W.	90-41-28.2	1488.525
ANGLE	11 -	14 -	15:	C.W.	179-59-30.2	C.C.W.	180-00-29.8	1134.463
ANGLE	14 -	15 -	19:	C.W.	180-00-27.8	C.C.W.	179-59-32.2	2622.953
ANGLE	15 -	19 -	59:	C.W.	270-12-43.4	C.C.W.	89-47-16.6	2372.130
ANGLE	19 -	59 -	69:	C.W.	180-00-00.0	C.C.W.	180-00-00.0	584.100
ANGLE	59 -	69 -	99:	C.W.	180-00-03.7	C.C.W.	179-59-56.3	2025.502
ANGLE	69 -	99 -	95:	C.W.	273-07-26.3	C.C.W.	86-52-33.7	2646.500
ANGLE	99 -	95 -	91:	C.W.	179-59-45.6	C.C.W.	180-00-14.4	2646.360
ANGLE	95 -	91 -	61:	C.W.	267-21-31.3	C.C.W.	92-38-28.7	1749.000
ANGLE	91 -	61 -	51:	C.W.	180-00-00.0	C.C.W.	180-00-00.0	679.047
ANGLE	61 -	51 -	11:	C.W.	180-00-00.0	C.C.W.	180-00-00.0	2245.945

Coordinates stored

Thursday February 23, 1995

3:42 PM