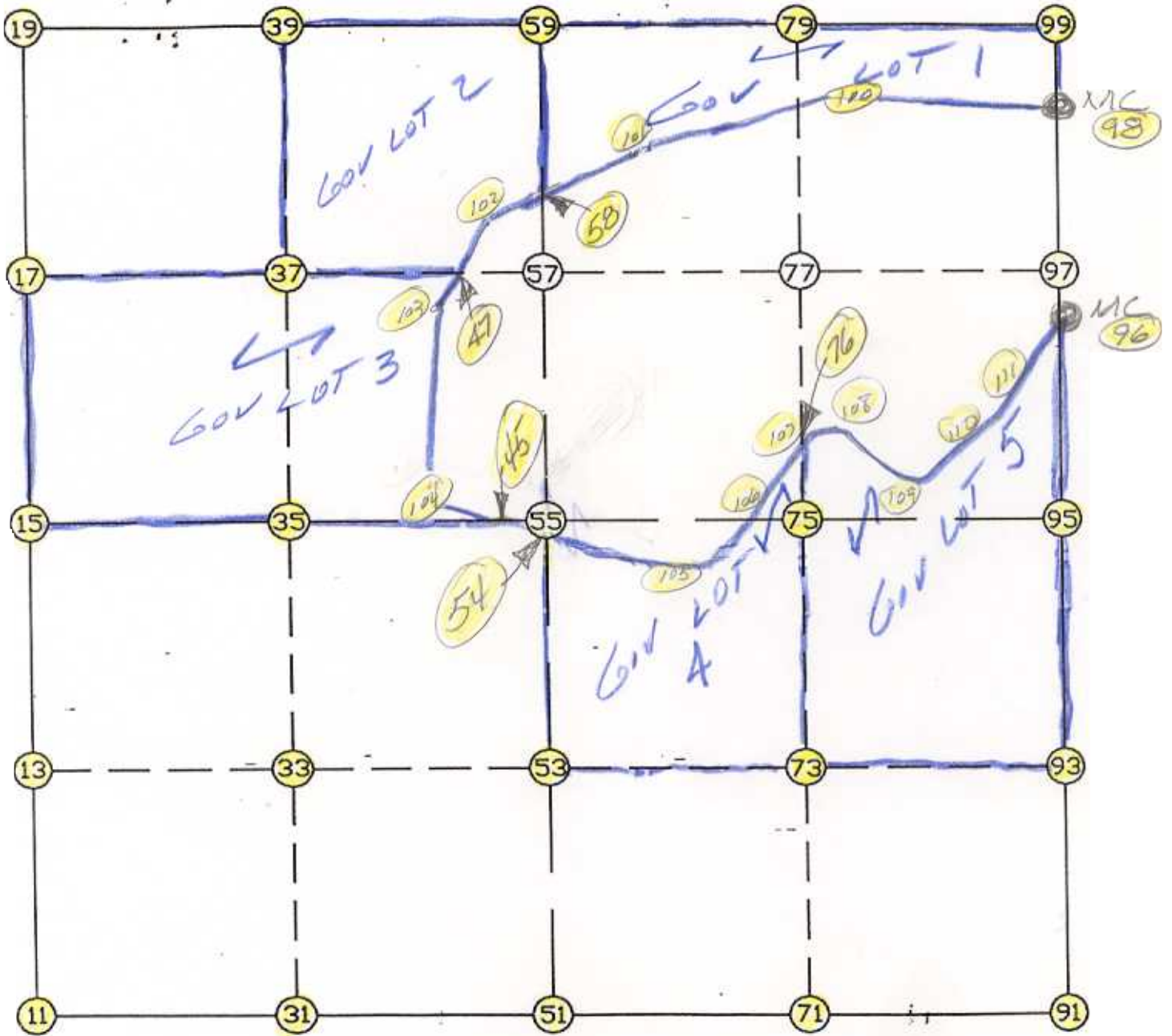


WRIGHT COUNTY SURVEYORS OFFICE

Public Works Building  
Buffalo, Minn. 55313

SECTION 36 TOWNSHIP 119 RANGE 27



REMARKS

---

---

---

THE INFORMATION SHOWN HEREON IS A COMPILATION OF WRIGHT COUNTY RECORDS AND IS INTENDED TO BE USED FOR COMPARISON PURPOSES ONLY. THE COUNTY IS NOT RESPONSIBLE FOR ANY INACCURACIES HEREIN CONTAINED.

COGO =====

Friday March 3, 1995

1:22 PM

Coordinate File Name: SEC-36.CRD    Lowest pt #:    1    Highest pt #:    111

Job #            : 95-15

Description: COUNTY COORDINATES SECTION 36 T119 R27

# of chars. in point descr.: 10

FROM TYPE	BEARING	DISTANCE	TO	NORTHING	EASTING
-----------	---------	----------	----	----------	---------

LIST POINTS					
POINT	NORTHING	EASTING	ELEVATION	DESCR	

11	132122.392149	461378.829825		<i>26</i>	
13	133445.828506	461387.544537			
15	134769.264863	461396.259249			
17	136092.574091	461394.765246			
19	137415.883318	461393.271243			
31	132128.862051	462698.386898			
33	133449.373220	462705.239598			
35	134769.884390	462712.092298			
37	136091.153462	462713.843752			
39	137412.422533	462715.595206			
45	134770.435995	463883.667004			
47	136090.165262	463631.403449			
51	132135.331954	464017.943971		<i>25</i>	
53	133452.917935	464022.934658			
54	134725.334022	464027.754254			
55	134770.503916	464027.925346			
56	134725.334022	464027.754254			
57	136089.732832	464032.922257			
58	136409.389027	464034.133035			
59	137408.961749	464037.919168			
71	132141.613695	465337.529453			
73	133456.369959	465343.595958			
75	134771.126222	465349.662462			
76	135453.398098	465352.800511			
79	137419.686605	465361.844280			
91	132147.895437	466657.114936		<i>28</i>	
93	133459.821982	466664.257257			
95	134771.748528	466671.399578			
96	135968.147000	466677.866000			
97	136101.079994	466678.584485			
98	136931.912742	466683.075055			
99	137430.411461	466685.769392			
100	136976.152172	465702.757360			
101	136747.079412	464670.639918			
102	136262.305603	463756.897981			
103	135791.879562	463413.945854			
104	134944.269311	463328.321800			
105	134633.279146	464321.841919			
106	134836.404392	464727.806766			
107	135418.776579	465282.914713			
108	135489.003060	465424.671453			
109	135444.252026	466051.595950			
110	135754.341938	466568.540007			
111	135873.953057	466640.663535			

START									
51	INV S	89-43-08.7	W	2639.146	51	132135.332	464017.944		
11	INV N	0-22-38.2	E	2646.930	11	132122.392	461378.830		
15	INV N	0-03-52.9	W	2646.620	15	134769.265	461396.259		
19	INV S	89-51-00.2	E	2644.657	19	137415.883	461393.271		
59	INV N	89-32-09.1	E	2647.937	59	137408.962	464037.919		
99	INV S	0-18-34.8	W	498.506	99	137430.411	466685.769		
98	INV S	0-18-34.8	W	963.780	98	136931.913	466683.075		
96	INV S	0-18-34.8	W	1196.416	96	135968.147	466677.866		
95	INV S	0-18-42.9	W	2623.892	95	134771.749	466671.400		
91	INV S	89-43-38.1	W	2639.201	91	132147.895	466657.115		
51	INV S	89-43-08.7	W	2639.146	51	132135.332	464017.944		
51	INV S	89-43-08.7	W	2639.146	11	132122.392	461378.830		
START									
51	INV N	0-13-01.3	E	2635.191	51	132135.332	464017.944		
55	INV N	0-13-01.3	E	2638.477	55	134770.504	464027.925		
55	INV N	0-13-01.3	E	2638.477	59	137408.962	464037.919		
START									
15	INV N	89-58-22.9	E	2631.666	15	134769.265	461396.259		
55	INV N	89-58-22.9	E	2643.475	55	134770.504	464027.925		
55	INV N	89-58-22.9	E	2643.475	95	134771.749	466671.400		
POINT-POINT ANGLES									
ANGLE	51 -	11 -	15:	C.W.	270-39-29.5	C.C.W.	89-20-30.5	2646.930	
ANGLE	11 -	15 -	19:	C.W.	179-33-28.9	C.C.W.	180-26-31.1	2646.620	
ANGLE	15 -	19 -	59:	C.W.	270-12-52.7	C.C.W.	89-47-07.3	2644.657	
ANGLE	19 -	59 -	99:	C.W.	179-23-09.3	C.C.W.	180-36-50.7	2647.937	
ANGLE	59 -	99 -	98:	C.W.	270-46-25.7	C.C.W.	89-13-34.3	498.506	
ANGLE	99 -	98 -	96:	C.W.	180-00-00.0	C.C.W.	180-00-00.0	963.780	
ANGLE	98 -	96 -	95:	C.W.	180-00-00.0	C.C.W.	180-00-00.0	1196.416	
ANGLE	96 -	95 -	91:	C.W.	180-00-08.1	C.C.W.	179-59-51.9	2623.892	
ANGLE	95 -	91 -	51:	C.W.	269-24-55.2	C.C.W.	90-35-04.8	2639.201	
ANGLE	91 -	51 -	11:	C.W.	179-59-30.6	C.C.W.	180-00-29.4	2639.146	

Coordinates stored

Friday March 3, 1995

1:23 PM