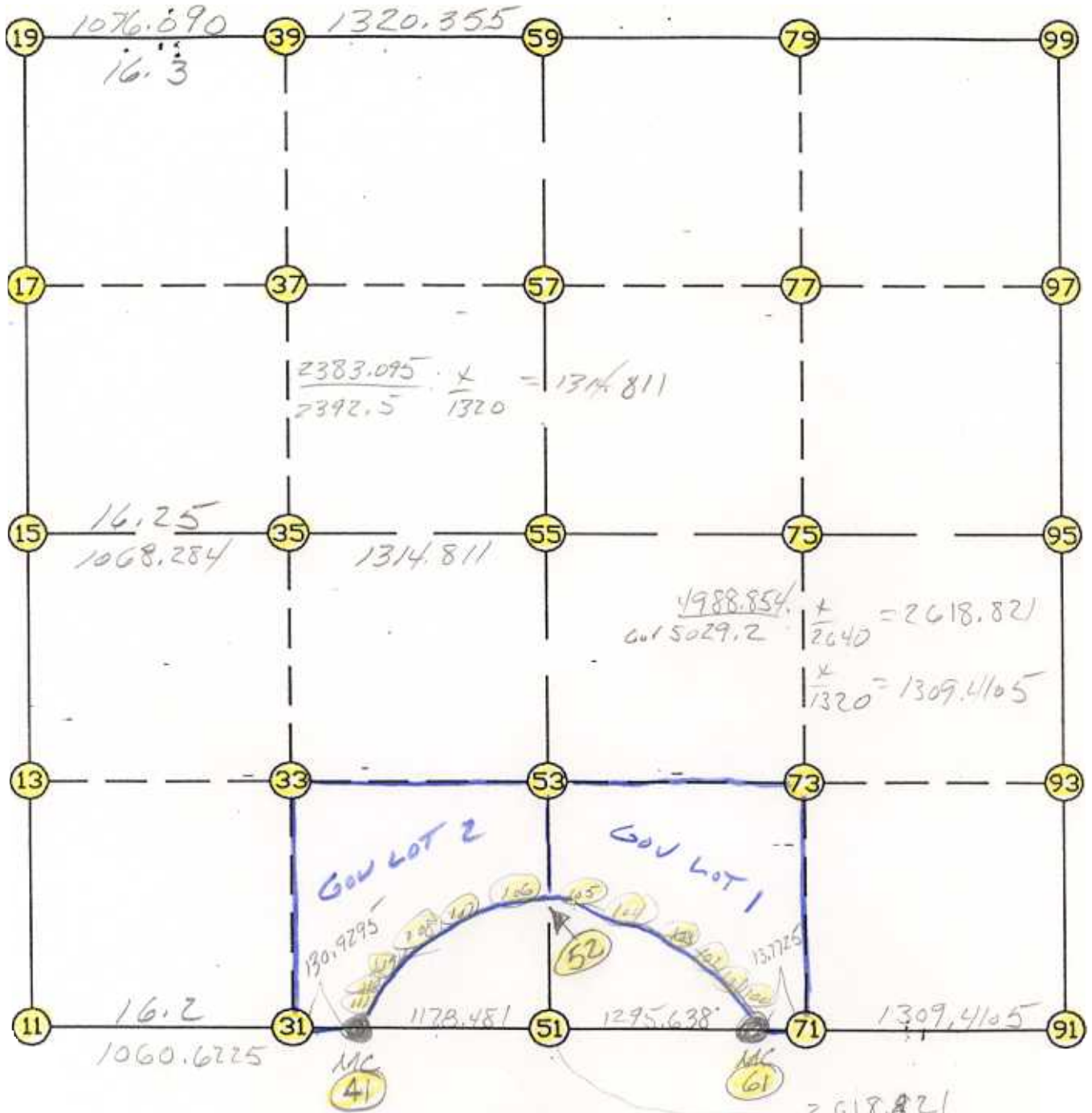


WRIGHT COUNTY SURVEYORS OFFICE

Public Works Building
Buffalo, Minn. 55313

SECTION 30 TOWNSHIP 119 RANGE 27



REMARKS

POSITION FOR SILENT GOV PRO PORTION SOUTH
LINE

THE INFORMATION SHOWN HEREON IS A COMPILATION OF WRIGHT COUNTY RECORDS AND IS INTENDED TO BE USED FOR COMPARISON PURPOSES ONLY. THE COUNTY IS NOT RESPONSIBLE FOR ANY INACCURACIES HEREIN CONTAINED.

===== COGO =====

Friday March 3, 1995

10:28 AM

Coordinate File Name: SEC-30.CRD Lowest pt #: 1 Highest pt #: 111

Job # : 95-15

Description: COUNTY COORDINATES SECTION 30 T119 R27

of chars. in point descr.: 10

FROM TYPE	BEARING	DISTANCE	TO	NORTHING	EASTING
-----------	---------	----------	----	----------	---------

LIST POINTS

POINT	NORTHING	EASTING	ELEVATION	DESCR
11	137371.825835	435157.304827		
13	138695.808421	435165.430502		
15	140019.791008	435173.556176		
17	141343.739480	435181.536218		
19	142667.687951	435189.516260		
31	137362.390914	436217.885225		
33	138684.025571	436229.815962		
35	140005.656539	436241.746666		
37	141331.655898	436253.653079		
39	142657.658810	436265.559523		
41	137361.226211	436348.809545		
51	137350.742327	437527.244234		
52	137896.035597	437533.280817		
53	138669.501299	437541.843347		
55	139988.260272	437556.442460		
57	141316.806696	437571.149923		
59	142645.353120	437585.857387		
61	137339.216206	438822.830964		
71	137339.093522	438836.602461		
73	138654.961572	438854.874132		
75	139970.837439	438873.145911		
77	141306.882524	438891.104459		
79	142642.927610	438909.063007		
91	137327.429078	440145.961006		
93	138640.421842	440167.905184		
95	139953.414606	440189.849363		
97	141296.958353	440211.058995		
99	142640.502100	440232.268627		
100	137449.673662	438736.760222		
101	137560.114833	438560.623242		
102	137639.244278	438370.283927		
103	137736.968435	438103.193225		
104	137813.572314	437918.907539		
105	137878.578392	437730.821243		
106	137899.397559	437495.237876		
107	137901.742493	437363.924548		
108	137884.696177	437234.228332		
109	137849.607921	437142.837717		
110	137637.675772	436678.581827		
111	137485.155648	436403.837926		

START							
11	INV N	0-21-05.9 E	2648.015	11	137371.826	435157.305	
15	INV N	0-20-43.2 E	2647.945	15	140019.791	435173.556	
19	INV S	89-27-57.6 E	2396.445	19	142667.688	435189.516	
59	INV S	89-53-41.9 E	2646.416	59	142645.353	437585.857	
99	INV S	0-54-15.9 W	2687.422	99	142640.502	440232.269	
95	INV S	0-57-27.0 W	2626.352	95	139953.415	440189.849	
91	INV N	89-29-22.5 W	1323.183	91	137327.429	440145.961	
61	INV N	89-29-25.0 W	1295.638	61	137339.216	438822.831	
51	INV N	89-29-25.0 W	1178.481	51	137350.742	437527.244	
41	INV N	89-29-25.1 W	1191.552	41	137361.226	436348.810	
START				11	137371.826	435157.305	
51	INV N	0-38-03.3 E	2637.680	51	137350.742	437527.244	
55	INV N	0-38-03.3 E	2657.256	55	139988.260	437556.442	
START				59	142645.353	437585.857	
15	INV S	89-14-30.8 E	2383.095	15	140019.791	435173.556	
55	INV S	89-14-30.8 E	2633.637	55	139988.260	437556.442	
				95	139953.415	440189.849	

POINT-POINT ANGLES

ANGLE	41 -	11 -	15:	C.W.	269-50-31.0	C.C.W.	90-09-29.0	2648.015
ANGLE	11 -	15 -	19:	C.W.	179-59-37.3	C.C.W.	180-00-22.7	2647.945
ANGLE	15 -	19 -	59:	C.W.	270-11-19.2	C.C.W.	89-48-40.8	2396.445
ANGLE	19 -	59 -	99:	C.W.	179-34-15.7	C.C.W.	180-25-44.3	2646.416
ANGLE	59 -	99 -	95:	C.W.	270-47-57.8	C.C.W.	89-12-02.2	2687.422
ANGLE	99 -	95 -	91:	C.W.	180-03-11.1	C.C.W.	179-56-48.9	2626.352
ANGLE	95 -	91 -	61:	C.W.	269-33-10.5	C.C.W.	90-26-49.5	1323.183
ANGLE	91 -	61 -	51:	C.W.	179-59-57.5	C.C.W.	180-00-02.5	1295.638
ANGLE	61 -	51 -	41:	C.W.	180-00-00.0	C.C.W.	180-00-00.0	1178.481
ANGLE	51 -	41 -	11:	C.W.	179-59-59.9	C.C.W.	180-00-00.1	1191.552

Coordinates stored

Friday March 3, 1995

10:29 AM