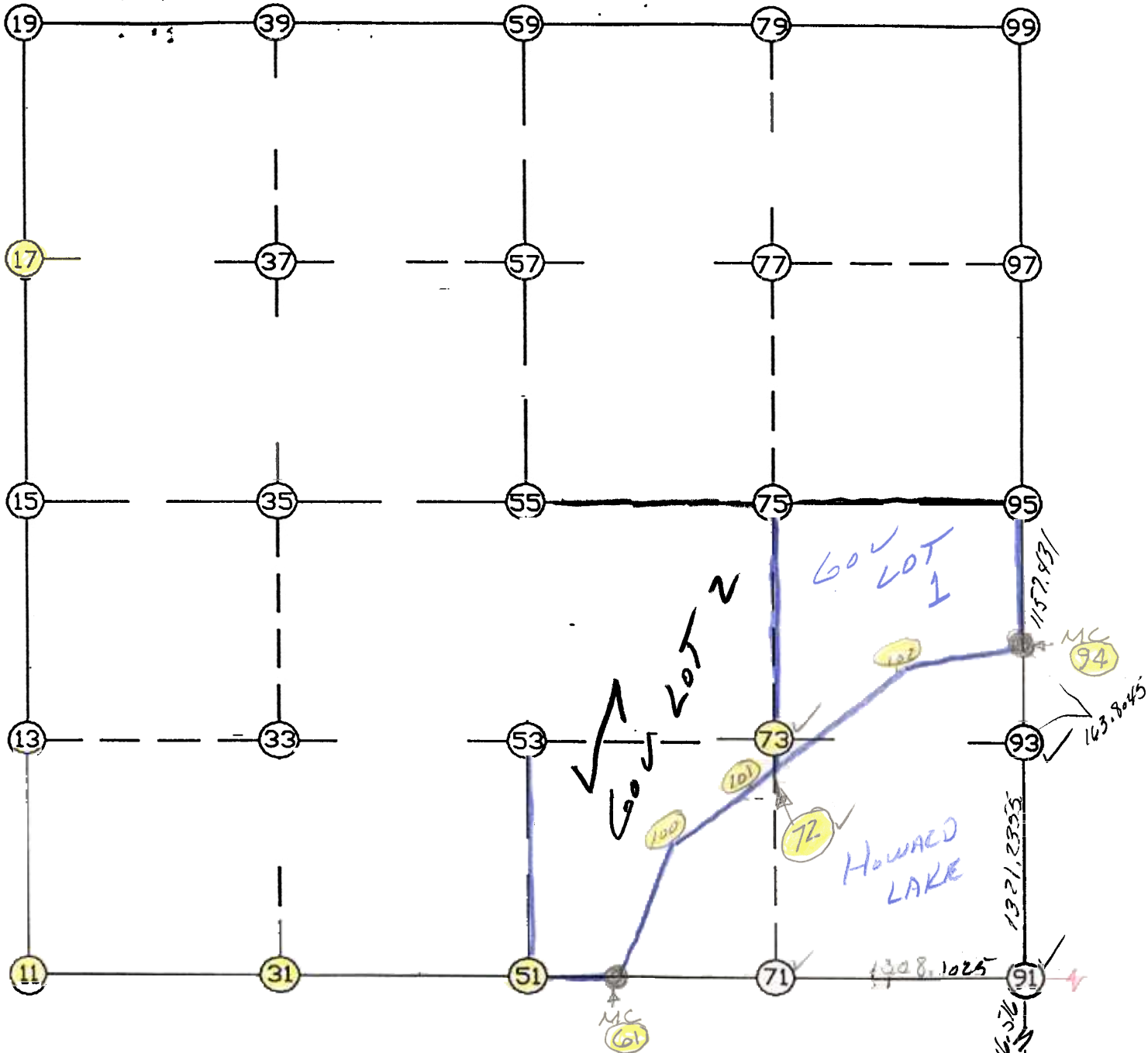


WRIGHT COUNTY SURVEYORS OFFICE

Public Works Building  
Buffalo, Minn. 55313

SECTION 28 TOWNSHIP 119 RANGE 27



REMARKS

SE SECTION CORNER WAS SET ON  
STRAIGHT LINE BETWEEN MC (90) & MC (94) AND  
AT N-S POSITION PROPORTIONED TO 60'  
CHANNAGE

THE INFORMATION SHOWN HEREON IS A COMPILATION OF WRIGHT COUNTY RECORDS AND IS INTENDED TO BE USED FOR COMPARISON PURPOSES ONLY. THE COUNTY IS NOT RESPONSIBLE FOR ANY INACCURACIES HEREIN CONTAINED.

MC 90  
380  
33

FROM TYPE BEARING DISTANCE TO NORTHING EASTING

LIST POINTS

POINT NORTHING EASTING ELEVATION DESCR

11	137359.399000	445452.200000		
13	138684.440625	445457.467258		
15	140009.482250	445462.734516		
17	141324.524999	445476.724453		
19	142639.567748	445490.714389		
31	137334.606909	446784.779721		
33	138667.360998	446791.227897		
35	140000.115087	446797.676074		
37	141316.104607	446808.418631		
39	142632.094127	446819.161187		
51	137309.814818	448117.359441		
53	138650.281372	448124.988537		
55	139990.747925	448132.617632		
57	141307.684216	448140.112809		
59	142624.620507	448147.607985		
61	137311.202377	448278.828610		
71	137320.267445	449425.420301		
72	138351.359566	449434.176063		
73	138651.050136	449436.720956		
75	139981.517874	449448.018937		
77	141299.323217	449479.410065		
79	142617.128561	449510.801193		
80	133014.225589	450767.300318		
90	137308.403840	451919.986940		
91	137330.609109	450733.481921		
93	138651.804059	450723.130502		
94	138815.603963	450721.847147		
95	139972.287824	450763.420242		
97	141290.962219	450818.707322		
99	142609.636615	450873.994402		
100	137947.321414	448852.792416		
101	138326.112900	449387.305570		
102	138635.839020	449962.312835		

START			11	137359.399	445452.200	<del>33</del>
11	INV N	0-13-39.9 E	2650.104	15	140009.482	445462.735
15	INV N	0-36-34.2 E	2630.234	19	142639.568	445490.714
19	INV S	89-40-39.6 E	2656.936	59	142624.621	448147.608
59	INV S	89-41-06.4 E	2726.428	99	142609.637	450873.994
99	INV S	2-24-02.8 W	2639.666	95	139972.288	450763.420
95	INV S	2-03-30.3 W	1157.431	94	138815.604	450721.847
94	INV S	0-26-56.0 E	1485.040	91	137330.609	450733.482
91	INV S	89-32-49.3 W	2454.730	61	137311.202	448278.829
61	INV S	89-30-27.5 W	161.475	51	137309.815	448117.359
51	INV N	88-56-03.0 W	2665.621	11	137359.399	445452.200 <del>33</del>

START			51	137309.815	448117.359	
51	INV N	0-19-33.9 E	2680.977	55	139990.748	448132.618
55	INV N	0-19-33.9 E	2633.915	59	142624.621	448147.608
START			15	140009.482	445462.735	
15	INV S	89-35-52.7 E	2669.949	55	139990.748	448132.618
55	INV S	89-35-52.7 E	2630.867	95	139972.288	450763.420

POINT-POINT ANGLES

ANGLE	51 - 11 - 15:	C.W. 269-09-42.9	C.C.W. 90-50-17.1	2650.104
ANGLE	11 - 15 - 19:	C.W. 180-22-54.3	C.C.W. 179-37-05.7	2630.234
ANGLE	15 - 19 - 59:	C.W. 269-42-46.2	C.C.W. 90-17-13.8	2656.936
ANGLE	19 - 59 - 99:	C.W. 179-59-33.2	C.C.W. 180-00-26.8	2726.428
ANGLE	59 - 99 - 95:	C.W. 272-05-09.3	C.C.W. 87-54-50.7	2639.666
<del>ANGLE</del>	<del>99 - 95 - 91:</del>	<del>C.W. 178-14-54.7</del>	<del>C.C.W. 181-45-05.3</del>	<del>2641.848</del>

POINT-POINT ANGLES

ANGLE	99 - 95 - 94:	C.W. 179-39-27.5	C.C.W. 180-20-32.5	1157.431
ANGLE	95 - 94 - 91:	C.W. 177-29-33.7	C.C.W. 182-30-26.3	1485.040
ANGLE	94 - 91 - 61:	C.W. 269-59-45.3	C.C.W. 90-00-14.7	2454.730
ANGLE	91 - 61 - 51:	C.W. 179-57-38.3	C.C.W. 180-02-21.7	161.475
ANGLE	61 - 51 - 11:	C.W. 181-33-29.5	C.C.W. 178-26-30.5	2665.621