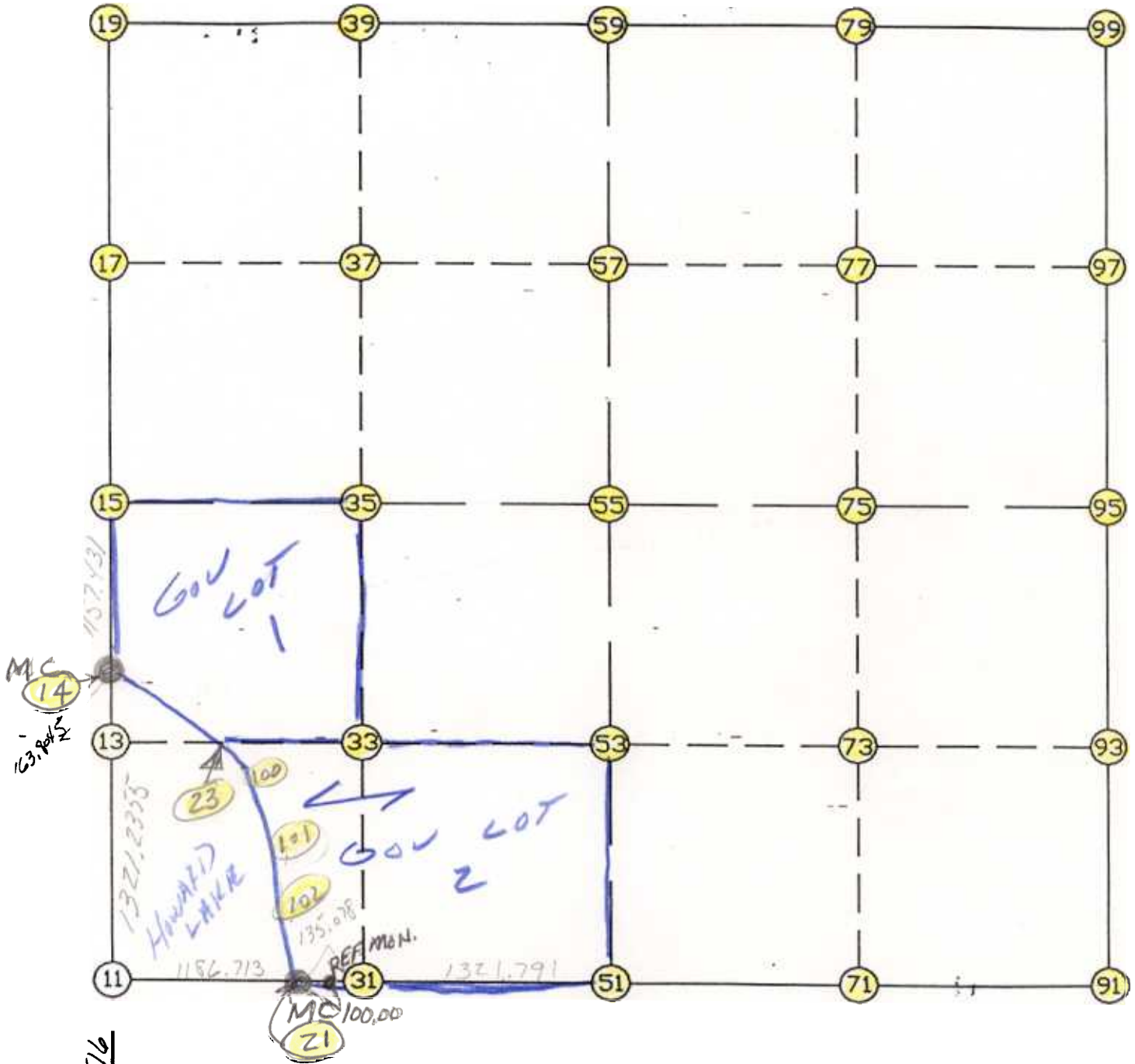


WRIGHT COUNTY SURVEYORS OFFICE

Public Works Building
Buffalo, Minn. 55313

SECTION 27 TOWNSHIP 119 RANGE 27



REMARKS

SW CORNER POSITION IS ON STRAIGHT LINE
BETWEEN MC'S - W. LINE SEC 27 TO W. LINE SEC 34
AND AT GOV. PROPORTION N-S BETWEEN MC'S TO
FIT PLATS & SURVEYS

THE INFORMATION SHOWN HEREON IS A COMPILATION OF WRIGHT COUNTY RECORDS AND IS INTENDED TO BE USED FOR COMPARISON PURPOSES ONLY. THE COUNTY IS NOT RESPONSIBLE FOR ANY INACCURACIES HEREIN CONTAINED.

MC 100
4316.576

FROM TYPE	BEARING	DISTANCE	TO	NORTHING	EASTING
LIST POINTS					
POINT	NORTHING	EASTING	ELEVATION	DESCR	
10	133014.225589	450767.300318			
11	137330.609109	450733.481921			
13	138651.804059	450723.130502			
14	138815.603963	450721.847147			
15	139972.287824	450763.420242			
17	141290.962219	450818.707322			
19	142609.636615	450873.994402			
21	137308.403840	451919.986940			
23	138650.889452	450920.900457			
31	137307.393152	452055.061159			
33	138645.515651	452082.903728			
35	139976.736925	452110.602703			
37	141297.353199	452158.197846			
39	142617.969474	452205.792988			
51	137297.503174	453376.815153			
53	138639.344600	453417.300159			
55	139981.186027	453457.785164			
57	141303.744179	453497.688369			
59	142626.302332	453537.591575			
71	137304.320087	454770.802577			
73	138644.993775	454792.780477			
75	139985.667463	454814.758378			
77	141312.706444	454835.816879			
79	142639.745425	454856.875380			
91	137311.137000	456164.790000			
93	138650.642949	456168.260796			
95	139990.148899	456171.731592			
97	141321.668708	456173.945388			
99	142653.188518	456176.159185			
100	138502.267678	451100.506103			
101	138086.915477	451487.456878			
102	137659.512294	451738.464217			

START				11	137330.609	450733.482
11	INV N	0-26-56.0 W	1485.040	14	138815.604	450721.847
14	INV N	2-03-30.3 E	1157.431	15	139972.288	450763.420
15	INV N	2-24-02.8 E	2639.666	19	142609.637	450873.994
19	INV N	89-38-29.4 E	2663.649	59	142626.302	453537.592
59	INV N	89-24-58.3 E	2638.705	99	142653.189	456176.159
99	INV S	0-05-42.9 W	2663.043	95	139990.149	456171.732
95	INV S	0-08-54.5 W	2679.021	91	137311.137	456164.790
91	INV S	89-43-11.3 W	2788.008	51	137297.503	453376.815
51	INV N	89-34-16.7 W	1456.869	21	137308.404	451919.987
21	INV N	88-55-40.2 W	1186.713	11	137330.609	450733.482
START				51	137297.503	453376.815
51	INV N	1-43-41.4 E	2684.904	55	139981.186	453457.785
55	INV N	1-43-41.4 E	2646.320	59	142626.302	453537.592
START				15	139972.288	450763.420
15	INV N	89-48-38.8 E	2694.380	55	139981.186	453457.785
55	INV N	89-48-38.8 E	2713.961	95	139990.149	456171.732

POINT-POINT ANGLES							
ANGLE	21 -	11 -	14:	C.W.	268-28-44.2	C.C.W.	91-31-15.8 1485.040
ANGLE	11 -	14 -	15:	C.W.	182-30-26.3	C.C.W.	177-29-33.7 1157.431
ANGLE	14 -	15 -	19:	C.W.	180-20-32.5	C.C.W.	179-39-27.5 2639.666
ANGLE	15 -	19 -	59:	C.W.	267-14-26.6	C.C.W.	92-45-33.4 2663.649
ANGLE	19 -	59 -	99:	C.W.	179-46-28.8	C.C.W.	180-13-31.2 2638.705
ANGLE	59 -	99 -	100:	C.W.	321-18-25.0	C.C.W.	38-41-34.2 6556.859

POINT-POINT ANGLES							
ANGLE	19 -	59 -	99:	C.W.	179-46-28.8	C.C.W.	180-13-31.2 2638.705
ANGLE	59 -	99 -	95:	C.W.	270-40-44.6	C.C.W.	89-19-15.4 2663.043
ANGLE	99 -	95 -	91:	C.W.	180-03-11.5	C.C.W.	179-56-48.5 2679.021
ANGLE	95 -	91 -	51:	C.W.	269-34-16.9	C.C.W.	90-25-43.1 2788.008
ANGLE	91 -	51 -	21:	C.W.	180-42-32.0	C.C.W.	179-17-28.0 1456.869
ANGLE	51 -	21 -	11:	C.W.	180-38-36.4	C.C.W.	179-21-23.6 1186.713