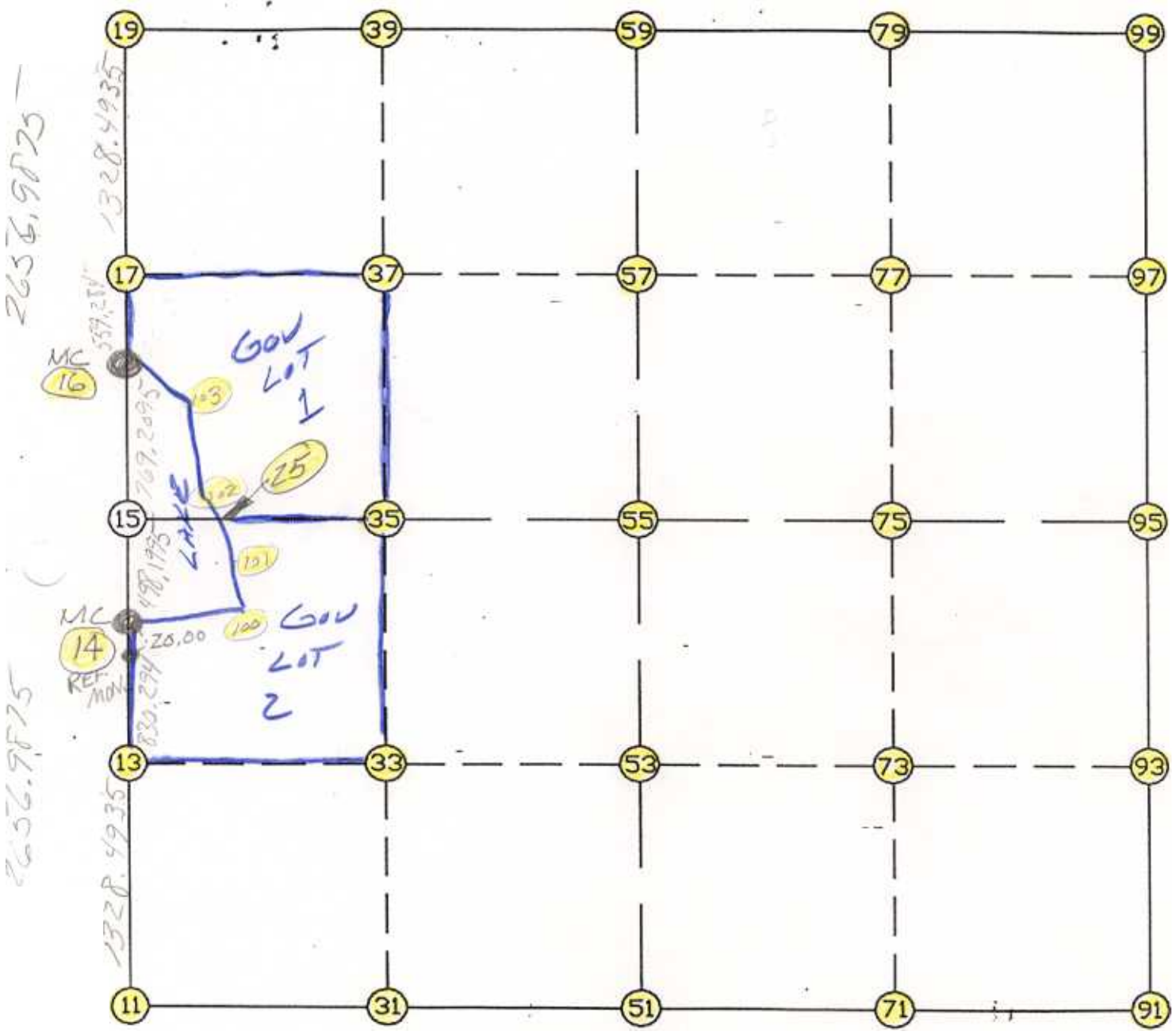


WRIGHT COUNTY SURVEYORS OFFICE

Public Works Building
Buffalo, Minn. 55313

SECTION 25 TOWNSHIP 119 RANGE 27



REMARKS

SET WITH POSITION MIDWAY BETWEEN SECTION
CORNERS ON LINE WITH M.C.'S NORTH & SOUTH

THE INFORMATION SHOWN HEREON IS A COMPILATION OF WRIGHT COUNTY RECORDS AND IS INTENDED TO BE USED FOR COMPARISON PURPOSES ONLY. THE COUNTY IS NOT RESPONSIBLE FOR ANY INACCURACIES HEREIN CONTAINED.

FROM TYPE	BEARING	DISTANCE	TO	NORTHING	EASTING
LIST POINTS					
POINT	NORTHING	EASTING	ELEVATION	DESCR	
11	137415.883318	461393.271243			
13	138744.006307	461424.679867			
14	139574.068225	461444.309903			
15	140072.157309	461454.798290			
16	140841.196107	461470.992134			
17	141400.418412	461479.299158			
19	142728.766185	461499.031235			
25	140071.169385	461767.125313			
31	137412.422533	462715.595206			
33	138740.215253	462739.172382			
35	140068.020119	462762.749775			
37	141390.390015	462781.935439			
39	142712.784887	462801.121465			
51	137408.961749	464037.919168			
53	138736.422339	464054.310214			
55	140063.882929	464070.701259			
57	141380.343259	464086.956477			
59	142696.803589	464103.211696			
71	137419.686605	465361.844280			
73	138739.705490	465373.625478			
75	140059.724376	465385.406676			
77	141373.069391	465397.115221			
79	142686.414405	465408.823766			
91	137430.411461	466685.769392			
93	138742.988642	466692.940742			
95	140055.565823	466700.112092			
97	141365.795522	466707.273964			
99	142676.025221	466714.435836			
100	139652.931866	461992.412227			
101	139997.136354	461889.189249			
102	140155.340113	461628.346579			
103	140565.289449	461644.828005			

START				11	137415.883	461393.271
11	INV N	1-21-17.0 E	2158.788	14	139574.068	461444.310
14	INV N	1-12-22.7 E	498.199	15	140072.157	461454.798
15	INV N	1-12-22.7 E	769.209	16	140841.196	461470.992
16	INV N	0-51-03.8 E	1887.778	19	142728.766	461499.031
19	INV S	89-17-48.5 E	2604.377	59	142696.804	464103.212
59	INV S	89-32-38.7 E	2611.307	99	142676.025	466714.436
99	INV S	0-18-47.5 W	2620.499	95	140055.566	466700.112
95	INV S	0-18-46.9 W	2625.194	91	137430.411	466685.769
91	INV S	89-32-09.1 W	2647.937	51	137408.962	464037.919
51	INV N	89-51-00.2 W	2644.657	11	137415.883	461393.271
START				51	137408.962	464037.919
51	INV N	0-42-26.8 E	2655.124	55	140063.883	464070.701
55	INV N	0-42-26.8 E	2633.121	59	142696.804	464103.212
START				15	140072.157	461454.798
15	INV S	89-49-07.6 E	2615.916	55	140063.883	464070.701
55	INV S	89-49-07.6 E	2629.424	95	140055.566	466700.112

POINT-POINT ANGLES

ANGLE	51 -	11 -	14:	C.W.	271-12-17.2	C.C.W.	88-47-42.8	2158.788
ANGLE	11 -	14 -	15:	C.W.	179-51-05.7	C.C.W.	180-08-54.3	498.199
ANGLE	14 -	15 -	16:	C.W.	180-00-00.0	C.C.W.	180-00-00.0	769.209
ANGLE	15 -	16 -	19:	C.W.	179-38-41.0	C.C.W.	180-21-19.0	1887.778
ANGLE	16 -	19 -	59:	C.W.	269-51-07.7	C.C.W.	90-08-52.3	2604.377
ANGLE	19 -	59 -	99:	C.W.	179-45-09.8	C.C.W.	180-14-50.2	2611.307
ANGLE	59 -	99 -	95:	C.W.	269-51-26.2	C.C.W.	90-08-33.8	2620.499
ANGLE	99 -	95 -	91:	C.W.	179-59-59.5	C.C.W.	180-00-00.5	2625.194
ANGLE	95 -	91 -	51:	C.W.	269-13-22.2	C.C.W.	90-46-37.8	2647.937
ANGLE	91 -	51 -	11:	C.W.	180-36-50.7	C.C.W.	179-23-09.3	2644.657