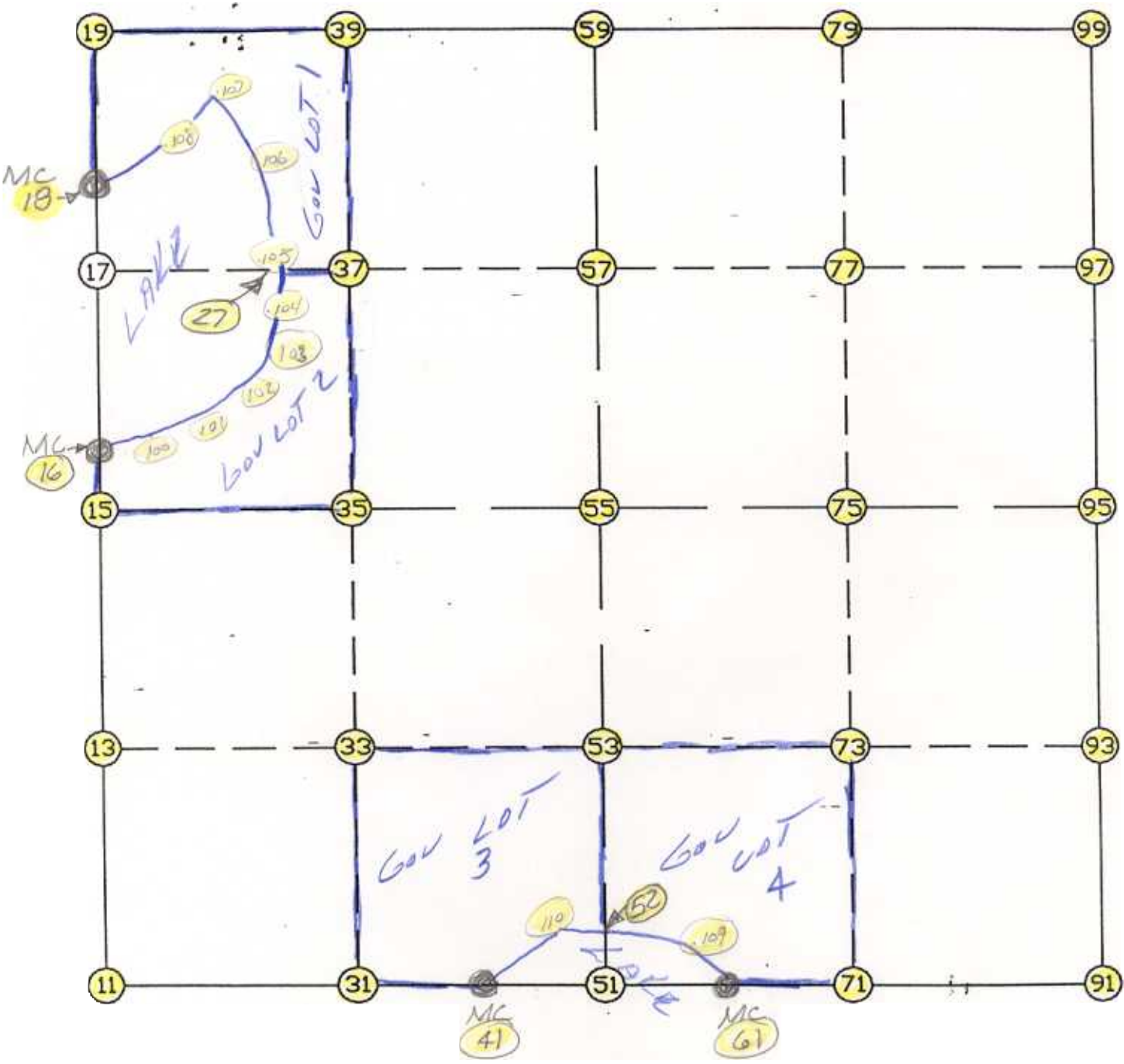


WRIGHT COUNTY SURVEYORS OFFICE

Public Works Building
Buffalo, Minn. 55313

SECTION 23 TOWNSHIP 119 RANGE 27



REMARKS

THE INFORMATION SHOWN HEREON IS A COMPILATION OF WRIGHT COUNTY RECORDS AND IS INTENDED TO BE USED FOR COMPARISON PURPOSES ONLY. THE COUNTY IS NOT RESPONSIBLE FOR ANY INACCURACIES HEREIN CONTAINED.

===== COGO =====

Thursday March 2, 1995

1:59 PM

Coordinate File Name: SEC-23.CRD Lowest pt #: 1 Highest pt #: 110

Job # : 95-15

Description: COUNTY COORDINATES SECTION 23 T119 R27

of chars. in point descr.: 10

FROM TYPE BEARING DISTANCE TO NORTHING EASTING

LIST POINTS
POINT NORTHING EASTING ELEVATION DESCR

11	142653.188518	456176.159185		
13	143977.837690	456175.106134		
15	145302.486862	456174.053083		
16	145400.179814	456173.955881		
17	146605.060739	456172.757048		
18	146995.833024	456172.368238		
19	147907.634616	456171.461013		
27	146607.314398	456987.609954		
31	142672.032005	457506.867919		
33	143990.678069	457502.237840		
35	145309.324132	457497.607760		
37	146608.711913	457492.907587		
39	147908.099693	457488.207414		
41	142687.408045	458592.708915		
51	142690.875493	458837.576653		
52	142752.927725	458837.188680		
53	144003.518447	458829.369545		
55	145316.161402	458821.162437		
57	146612.363086	458813.058126		
59	147908.564771	458804.953815		
61	142695.788999	459182.702968		
71	142709.820839	460168.303944		
73	144016.425683	460159.593805		
75	145323.030527	460150.883667		
77	146625.696581	460143.308396		
79	147928.362635	460135.733126		
91	142728.766185	461499.031235		
93	144029.332918	461489.818066		
95	145329.899652	461480.604896		
97	146639.030075	461473.558667		
99	147948.160498	461466.512437		
100	145597.548800	456348.515424		
101	145890.059730	456500.703256		
102	146051.952196	456614.030311		
103	146254.123628	456830.756691		
104	146405.678470	456977.073950		
105	146629.982716	456988.794433		
106	147022.559563	456933.518118		
107	147451.547432	456760.064788		
108	147078.515863	456399.604755		
109	142750.427762	459068.435442		
110	142754.589143	458683.507410		

START					11	142653.189	456176.159
11	INV N	0-02-44.0 W	2649.299	15	145302.487	456174.053	
15	INV N	0-03-25.2 W	97.693	16	145400.180	456173.956	
16	INV N	0-03-25.2 W	1595.654	18	146995.833	456172.368	
18	INV N	0-03-25.2 W	911.802	19	147907.635	456171.461	
19	INV N	89-58-47.1 E	2633.493	59	147908.565	458804.954	
59	INV N	89-08-51.6 E	2661.853	99	147948.160	461466.512	
99	INV S	0-18-30.2 E	2618.299	95	145329.900	461480.605	
95	INV S	0-24-21.1 E	2601.199	91	142728.766	461499.031	
91	INV S	89-11-03.6 W	2316.563	61	142695.789	459182.703	
61	INV S	89-11-03.6 W	345.161	51	142690.875	458837.577	
51	INV S	89-11-19.4 W	244.892	41	142687.408	458592.709	
41	INV S	89-11-19.4 W	2416.792	11	142653.189	456176.159	
START				51	142690.875	458837.577	
51	INV N	0-21-29.6 W	2625.337	55	145316.161	458821.162	
55	INV N	0-21-29.6 W	2592.454	59	147908.565	458804.954	
START				15	145302.487	456174.053	
15	INV N	89-42-14.5 E	2647.145	55	145316.161	458821.162	
55	INV N	89-42-14.5 E	2659.478	95	145329.900	461480.605	

POINT-POINT ANGLES

ANGLE	51 -	11 -	15:	C.W.	270-45-56.6	C.C.W.	89-14-03.4	2649.299
ANGLE	11 -	15 -	16:	C.W.	179-59-18.7	C.C.W.	180-00-41.3	97.693
ANGLE	15 -	16 -	18:	C.W.	180-00-00.0	C.C.W.	180-00-00.0	1595.654
ANGLE	16 -	18 -	19:	C.W.	180-00-00.0	C.C.W.	180-00-00.0	911.802
ANGLE	18 -	19 -	59:	C.W.	270-02-12.4	C.C.W.	89-57-47.6	2633.493
ANGLE	19 -	59 -	99:	C.W.	179-10-04.5	C.C.W.	180-49-55.5	2661.853
ANGLE	59 -	99 -	95:	C.W.	270-32-38.2	C.C.W.	89-27-21.8	2618.299
ANGLE	99 -	95 -	91:	C.W.	179-54-09.0	C.C.W.	180-05-51.0	2601.199
ANGLE	95 -	91 -	61:	C.W.	269-35-24.8	C.C.W.	90-24-35.2	2316.563
ANGLE	91 -	61 -	51:	C.W.	180-00-00.0	C.C.W.	180-00-00.0	345.161
ANGLE	61 -	51 -	41:	C.W.	180-00-15.7	C.C.W.	179-59-44.3	244.892
ANGLE	51 -	41 -	11:	C.W.	180-00-00.0	C.C.W.	180-00-00.0	2416.792

Coordinates stored

Thursday March 2, 1995

2:01 PM